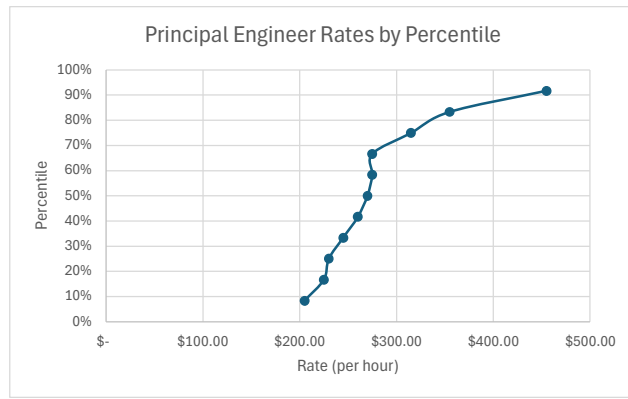
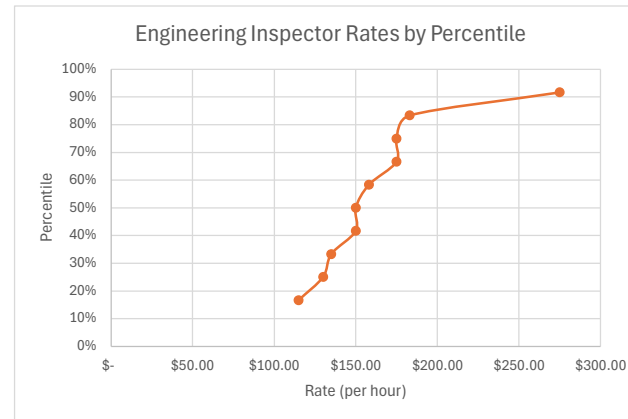


ATTACHMENT 3

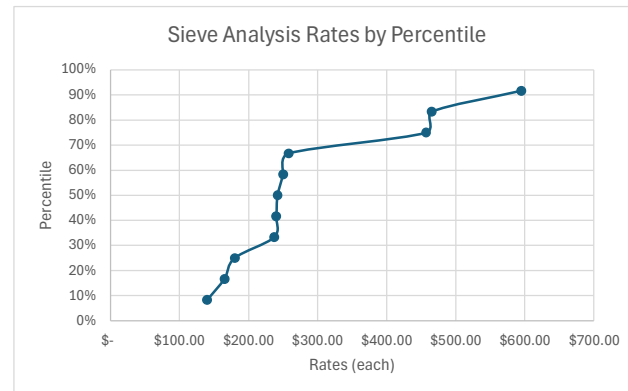
Principal Engineer		
Vendor	Rate (per hr)	Percentile
SALEM	\$ 205.00	8%
Geocon	\$ 225.00	17%
Crawford & Associates	\$ 230.00	25%
MatriScope	\$ 245.00	33%
Aftershock Geotechnical	\$ 260.00	42%
Kleinfelder	\$ 270.00	50%
Achievement Engineering Corp.	\$ 275.00	58%
Terracon	\$ 275.00	67%
BSK	\$ 315.00	75%
Blackburn Consulting	\$ 355.00	83%
Construction Testing Services	\$ 455.00	92%



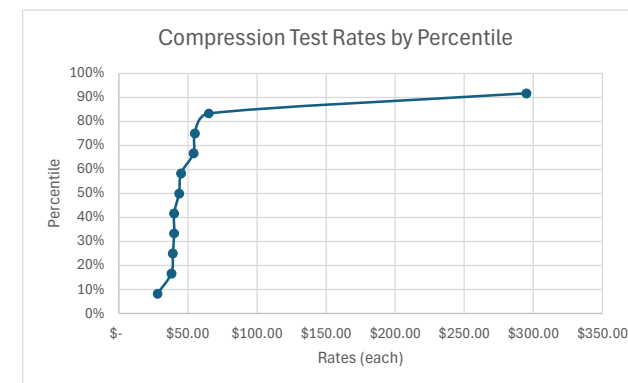
Engineering Inspector		
Vendor	Rate (per hr)	Percentile
Geocon	\$ 90.00	8%
Crawford & Associates	\$ 115.00	17%
Kleinfelder	\$ 130.00	25%
Aftershock Geotechnical	\$ 135.00	33%
Achievement Engineering Corp.	\$ 150.00	42%
SALEM	\$ 150.00	50%
BSK	\$ 158.00	58%
Terracon	\$ 175.00	67%
MatriScope	\$ 175.00	75%
Blackburn Consulting	\$ 183.00	83%
Construction Testing Services	\$ 275.00	92%



Sieve Analysis		
Vendor	Rate (each)	Percentile
Geocon	\$ 140.00	8%
SALEM	\$ 165.00	17%
Terracon	\$ 180.00	25%
BSK	\$ 237.00	33%
Crawford & Associates	\$ 240.00	42%
Achievement Engineering Corp.	\$ 242.00	50%
Aftershock Geotechnical	\$ 250.00	58%
Blackburn Consulting	\$ 258.00	67%
Construction Testing Services	\$ 457.00	75%
Kleinfelder	\$ 465.00	83%
MatriScope	\$ 595.00	92%

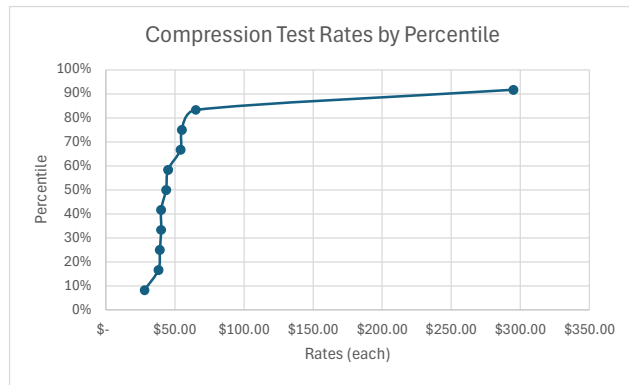


Compression Test Concrete Cylinders		
Vendor	Rate (each)	Percentile
SALEM	\$ 28.00	8%
Terracon	\$ 38.00	17%
BSK	\$ 39.00	25%
Aftershock Geotechnical	\$ 40.00	33%
Geocon	\$ 40.00	42%
Construction Testing Services	\$ 43.50	50%
Crawford & Associates	\$ 45.00	58%
Blackburn Consulting	\$ 54.00	67%
Achievement Engineering Corp.	\$ 55.00	75%
MatriScope	\$ 65.00	83%
Kleinfelder	\$ 295.00	92%

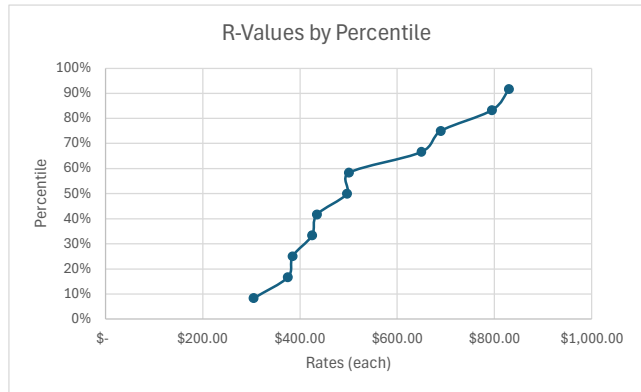


ATTACHMENT 3

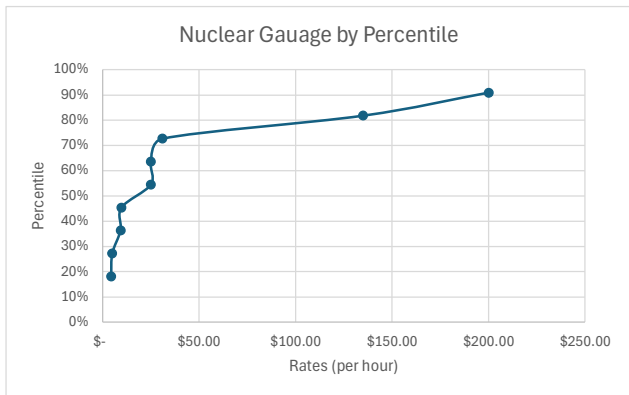
Compression Test Concrete Cylinders		
Vendor	Rate (each)	Percentile
SALEM	\$ 28.00	8%
Terracon	\$ 38.00	17%
BSK	\$ 39.00	25%
Aftershock Geotechnical	\$ 40.00	33%
Geocon	\$ 40.00	42%
Construction Testing Services	\$ 43.50	50%
Crawford & Associates	\$ 45.00	58%
Blackburn Consulting	\$ 54.00	67%
Achievement Engineering Corp.	\$ 55.00	75%
MatriScope	\$ 65.00	83%
Kleinfelder	\$ 295.00	92%



R-Values		
Vendor	Rate (each)	Percentile
SALEM	\$ 305.00	8%
Geocon	\$ 375.00	17%
Achievement Engineering Corp.	\$ 385.00	25%
Terracon	\$ 425.00	33%
Crawford & Associates	\$ 435.00	42%
BSK	\$ 497.00	50%
Blackburn Consulting	\$ 501.00	58%
Aftershock Geotechnical	\$ 650.00	67%
Kleinfelder	\$ 690.00	75%
MatriScope	\$ 795.00	83%
Construction Testing Services	\$ 830.00	92%



Nuclear Gauge		
Vendor	Rate (per hr)	Percentile
Crawford & Associates	\$ 3.75	9%
Terracon	\$ 4.38	18%
Geocon	\$ 5.00	27%
Aftershock Geotechnical	\$ 9.25	36%
BSK	\$ 9.75	45%
MatriScope	\$ 25.00	55%
Blackburn Consulting	\$ 25.00	64%
Achievement Engineering Corp.	\$ 31.00	73%*
SALEM	\$ 135.00	82%
Construction Testing Services	\$ 200.00	91%
Kleinfelder		



*approximately 75 percentile

Negotiation Fee		
Professional/Testing Services	Rates	
Principal Engineer	\$ 315.00	per hour
Engineering Inspector	\$ 175.00	per hour
Sieve Analysis	\$ 457.00	each
Compression Test Concrete Cylinders	\$ 55.00	each
R-Values	\$ 690.00	each
Nuclear Gauge	\$ 31.00	per hour