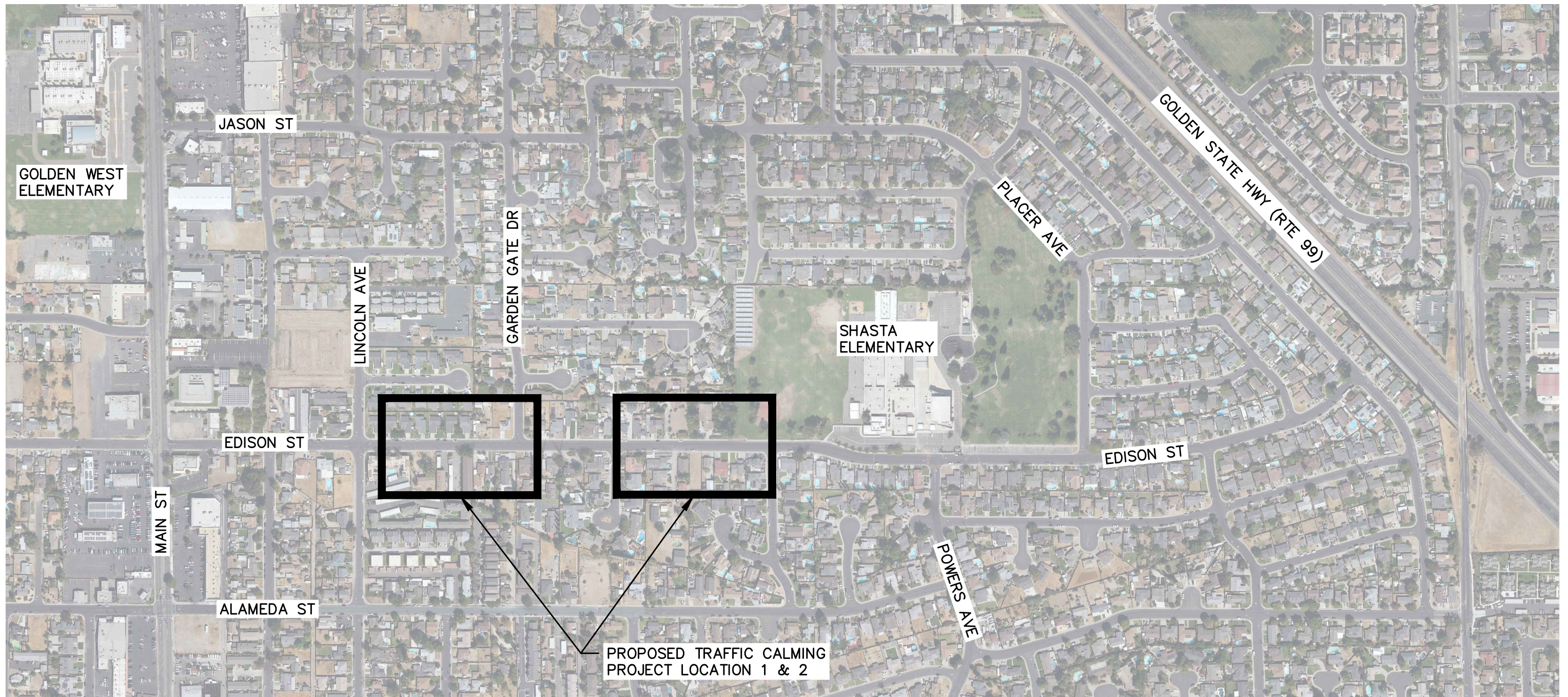
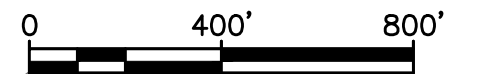


\\utopia\eng\p\w\eng\804-02 Traffic Calming\53-2024-10-16 E Edison St\03 Stage 2\Proposal\08-1 Exhibit\08-1a AutoCAD\IE Edison St Traffic Calming.dwg



NOTES:

1. WHERE APPLICABLE VERIFY EXISTING UNDERGROUND UTILITIES WHETHER OR NOT THEY ARE SHOWN ON THIS EXHIBIT PRIOR TO EXCAVATION.
2. ALL WORK MUST CONFORM TO THE 2025 EDITION OF CALTRANS STANDARD PLANS AND SPECIFICATIONS AND 2026 EDITION OF CALIFORNIA MUTCD.
3. ALL SIGN DIMENSIONS AND LETTERING SHALL CONFORM TO CALTRANS OR FHWA SIGN SPECIFICATIONS.
4. THE BOTTOM OF THE PROPOSED SIGNS MUST BE MINIMUM 7 FT ABOVE THE SIDEWALK SURFACE.
5. ANGLE OF SIGN PLACEMENT SHALL BE DETERMINED DURING INSTALLATION FOR BEST LEGIBILITY BY THE TRAFFIC THEY INTEND TO SERVE.
6. VERIFY ALL CONTROLLING DIMENSIONS PRIOR TO CONSTRUCTION.
7. TRIMMING TREES MUST BE APPLIED AND THE LINE OF SIGHT MUST BE TESTED FOR ALL NEWLY INSTALLED SIGNS.
8. SPEED LUMPS MUST BE TRAFFIC LOGIX RUBBER SPEED CUSHIONS 7'L X 6'W X 3"H WITH MUTCD ARROW OR APPROVED EQUAL.
9. ALL EXISTING TRAFFIC SIGNS AND STRIPING SHALL REMAIN IN PLACE UNLESS OTHERWISE NOTED.
10. ALL FADED OR WORN STRIPING SHALL BE REFRESHED AS NEEDED.
11. ALL NEW STRIPING SHALL BE THERMOPLASTIC.



SCALE = 1:400

APPROVED SUBJECT TO THE DATA SHOWN. CITY OF MANTECA IS NOT RESPONSIBLE FOR ERRORS AND OR OMISSIONS THAT MAY BE PRESENT ON THESE PLANS.



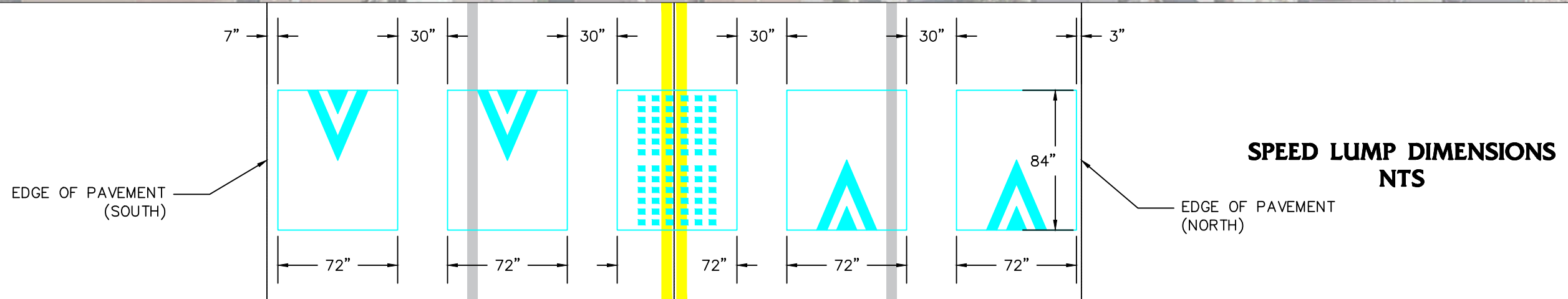
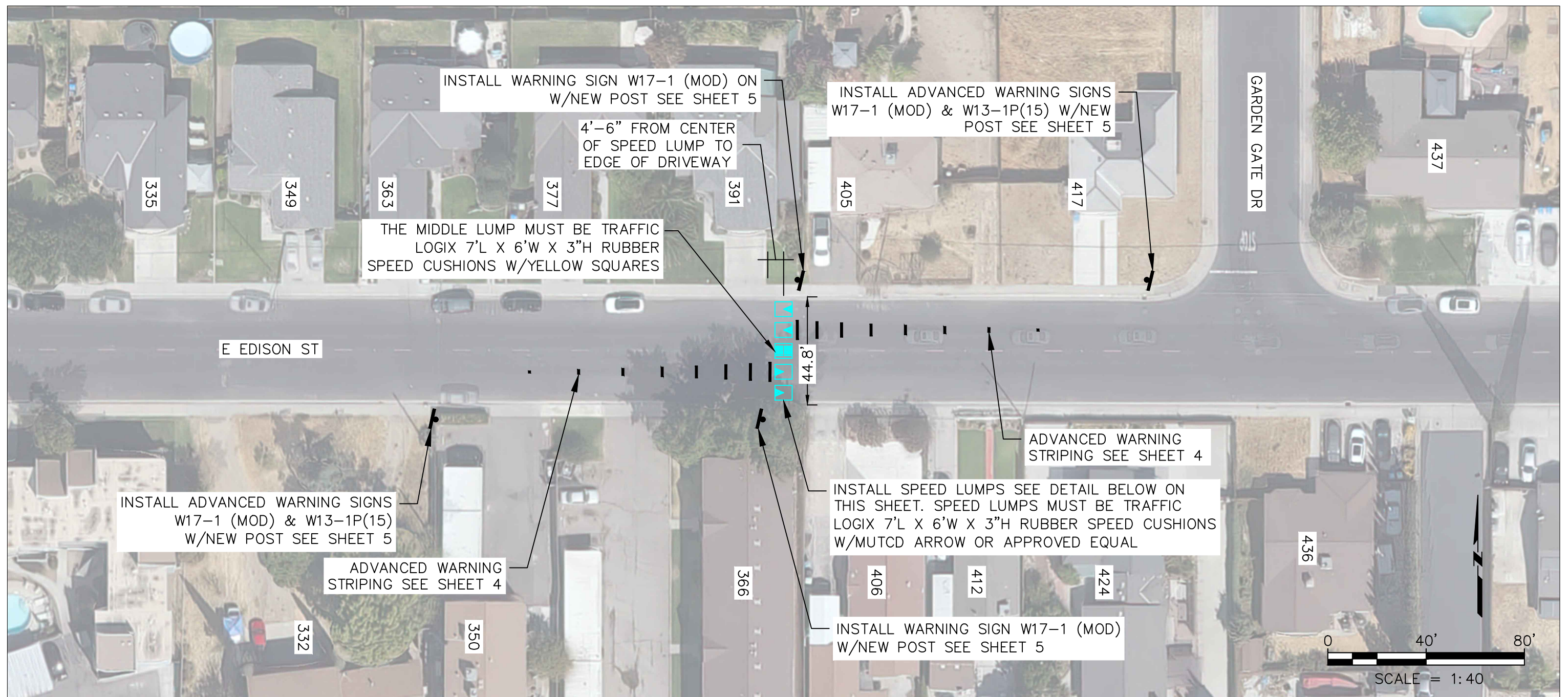
CITY OF MANTECA
DEPARTMENT OF ENGINEERING
1001 WEST CENTER STREET, MANTECA, CALIFORNIA 95337

SCALE	AS SHOWN
DESIGNED	JS/BD
DRAWN	JS
CHECKED	BD
DATE	02/25/25

**E EDISON ST
TRAFFIC CALMING
VICINITY MAP**

SHEET
1
OF **5** SHEETS

\\utopia\Eng\PM\ENR\904_Traffic Engineering\804-02_Traffic Calming\53-2024-10-16 E Edison St\03 Stage 2\Proposals\08-1 Exhibit\08-1a AutoCAD\IE Edison St Traffic Calming.dwg



APPROVED SUBJECT TO THE DATA SHOWN. CITY OF MANTECA IS NOT RESPONSIBLE FOR ERRORS AND OR OMISSIONS THAT MAY BE PRESENT ON THESE PLANS.



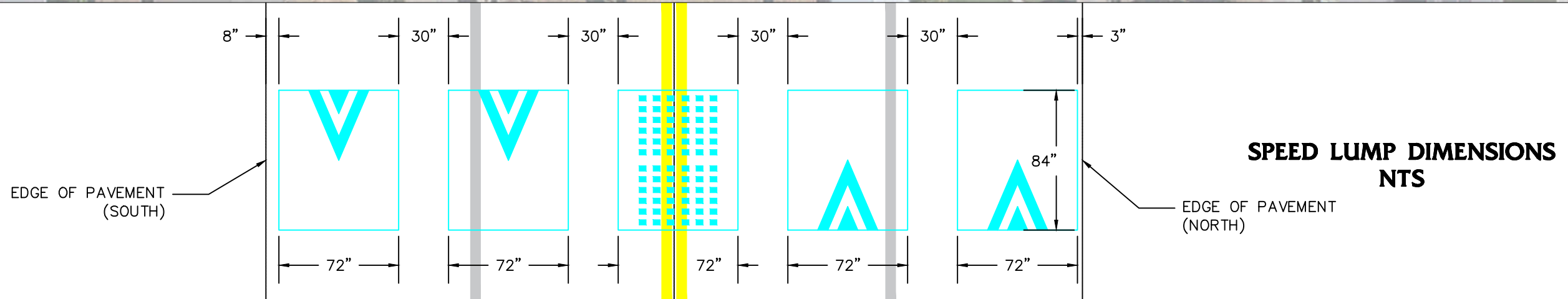
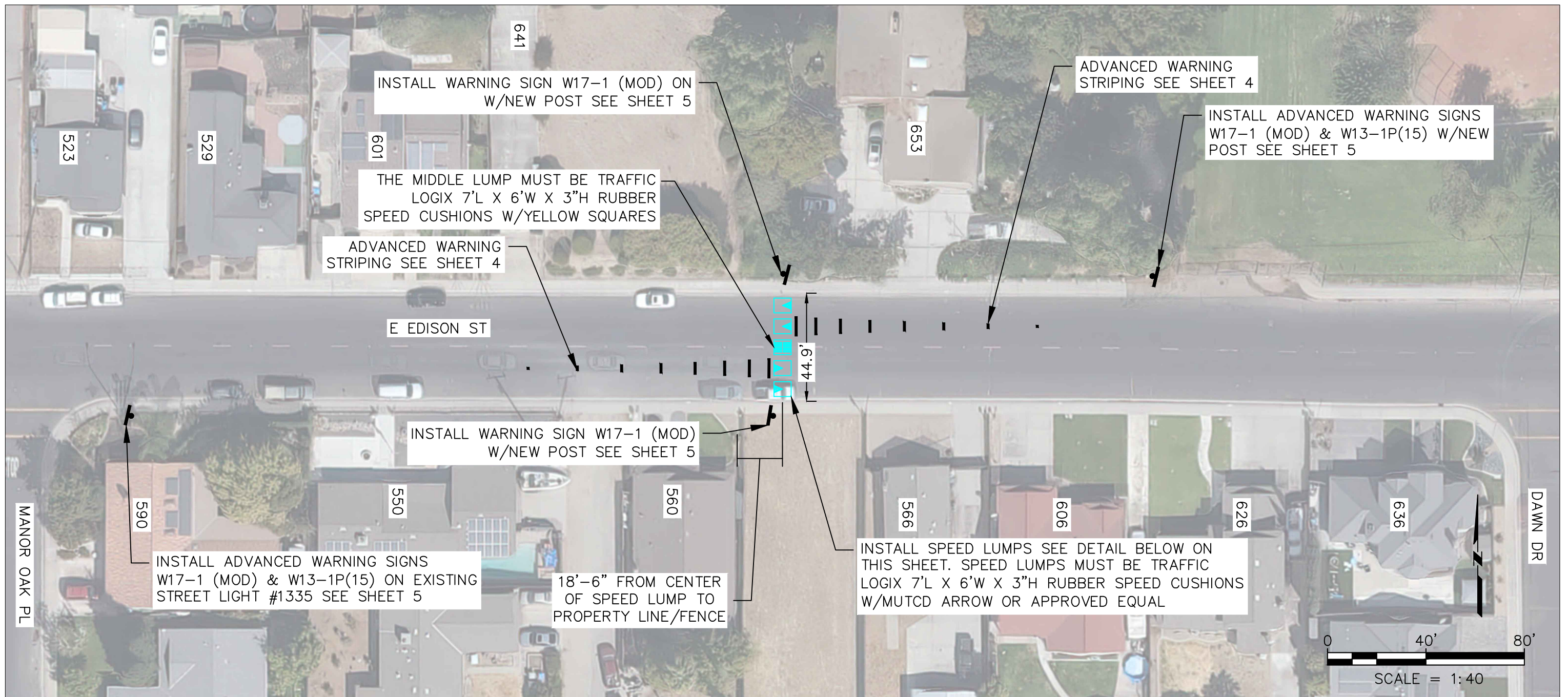
CITY OF MANTECA
 DEPARTMENT OF ENGINEERING
 1001 WEST CENTER STREET, MANTECA, CALIFORNIA 95337

SCALE	AS SHOWN
DESIGNED	JS/BD
DRAWN	JS
CHECKED	BD
DATE	02/25/26

E EDISON ST
TRAFFIC CALMING
LOCATION 1

SHEET
2
 OF **5** SHEETS

\\utopia\Eng\p\W\EN\9504_Traffic Engineering\804-02_Traffic Calming\53-2024-10-16 E Edison St\03 Stage 2\Proposals\08-1 Exhibit\08-1a AutoCAD\IE Edison St Traffic Calming.dwg



APPROVED SUBJECT TO THE DATA SHOWN. CITY OF MANTECA IS NOT RESPONSIBLE FOR ERRORS AND OR OMISSIONS THAT MAY BE PRESENT ON THESE PLANS.



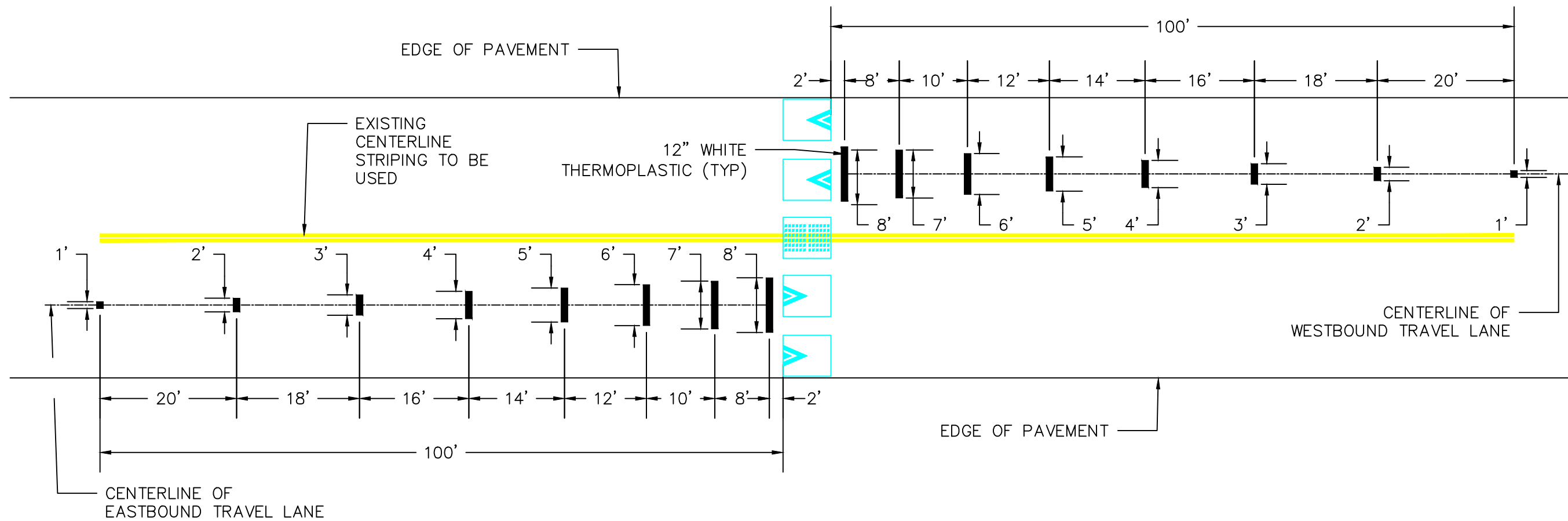
CITY OF MANTECA
DEPARTMENT OF ENGINEERING
1001 WEST CENTER STREET, MANTECA, CALIFORNIA 95337

SCALE	AS SHOWN
DESIGNED	JS/BD
DRAWN	JS
CHECKED	BD
DATE	02/25/26

**E EDISON ST
TRAFFIC CALMING
LOCATION 2**

SHEET
3
OF **5** SHEETS

\\utopia\eng\p\W\EN\9\904 - Traffic Calming\804-02 Traffic Calming\53-2024-10-16 E Edison St\09 Stage 2 Proposals\08-1 Exhibit\08-1a AutoCAD\E Edison St Traffic Calming.dwg



**ADVANCED WARNING STRIPING
DETAIL 1.1
NTS**

APPROVED SUBJECT TO THE DATA SHOWN.
CITY OF MANTECA IS NOT RESPONSIBLE
FOR ERRORS AND OR OMISSIONS THAT
MAY BE PRESENT ON THESE PLANS.



CITY OF MANTECA
DEPARTMENT OF ENGINEERING
1001 WEST CENTER STREET, MANTECA, CALIFORNIA 95337

SCALE	AS SHOWN	TITLE
DESIGNED	JS/BD	
DRAWN	JS	
CHECKED	BD	
DATE	02/25/26	

**E EDISON ST
TRAFFIC CALMING
DETAILS 1**

SHEET
4
OF **5** SHEETS

ROADSIDE SIGN PANEL QUANTITIES

SIGN QUANTITIES	SIGN DESIGNATION	SIGN MESSAGE/ DESCRIPTION	PANEL SIZE (INCHES)	SINGLE FACED	BACKGROUND		LEGEND & BORDER		PREMIUM PROTECTIVE FILM
					SHEETING COLOR	RETROREFLECTIVE ASTM TYPE	SHEETING COLOR	RETROREFLECTIVE ASTM TYPE	
8	W17-1 (MOD)	SPEED LUMP	30 X 30	X	YELLOW	XI	BLACK	-	X
4	W13-1P (15)	15 MPH	18 X 18	X	YELLOW	XI	BLACK	-	X

NOTE: SIGN PANEL RETROREFLECTIVE MATERIAL SHALL BE PER CALTRANS AUTHORIZED MATERIALS LIST.

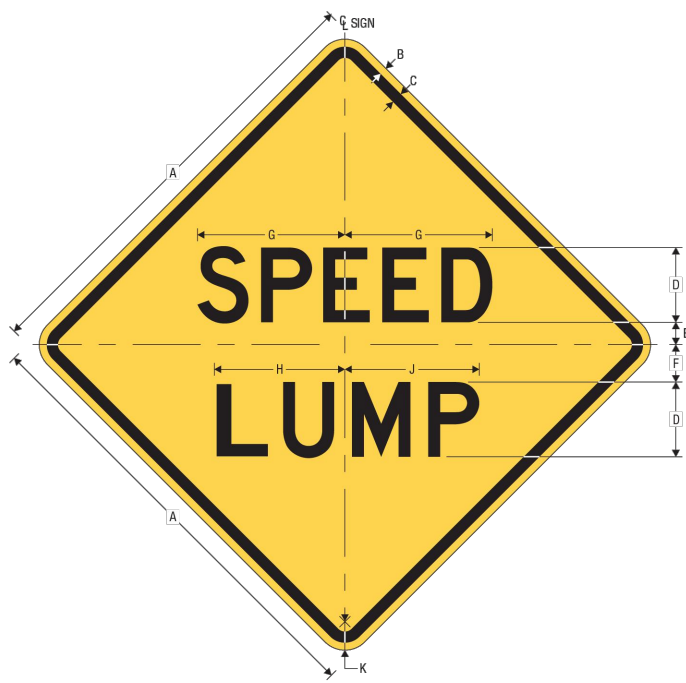


W17-1 (MODIFIED)



W13-1P (15)

**WARNING SIGNS
DETAIL 1.2
NTS**



W17-1
SPEED HUMP

A	B	C	D	E	F	G	H	J	K
24	0.375	0.625	4 D	1.25	2	7.886	6.961	7.210	1.5
30	0.5	0.75	5 D	1.5	2.5	9.857	8.732	8.982	1.875
36	0.625	0.875	6 D	1.875	3	11.828	10.379	10.878	2.25
48	0.75	1.25	8 D	2.5	4	15.771	13.921	14.421	3

COLORS: LEGEND, BORDER - BLACK
BACKGROUND - YELLOW (RETROREFLECTIVE)

W17-1
Issued 3/1/2012



W13-1
ADVISORY SPEED (ENGLISH)

*Series 2000 Standard Alphabets.
**Optically space numerals about vertical centerline.

A	B	C	D	E	F	G	H	J
18	.375	.625	2.5	8 E	2	3 E	4.723	1.5
24	.375	.625	3.625	10 E	2.75	4 E	6.284	1.5
30	.5	.75	4.5	12 E	4	5 E	7.416	1.875

WARNING SIGN COLORS:

LEGEND - BLACK
BACKGROUND - YELLOW (RETROREFLECTIVE)

TTC SIGN COLORS:

LEGEND - BLACK
BACKGROUND - ORANGE (RETROREFLECTIVE)

2-108

\\utopia\eng\p\WEN\95104 - Traffic Engineering\804-02 Traffic Calming\53-2024-10-16 E Edison St\03 Stage 2\Proposals\08-1 Exhibit\08-1a AutoCAD\E Edison St Traffic Calming.dwg

APPROVED SUBJECT TO THE DATA SHOWN.
CITY OF MANTECA IS NOT RESPONSIBLE
FOR ERRORS AND OR OMISSIONS THAT
MAY BE PRESENT ON THESE PLANS.

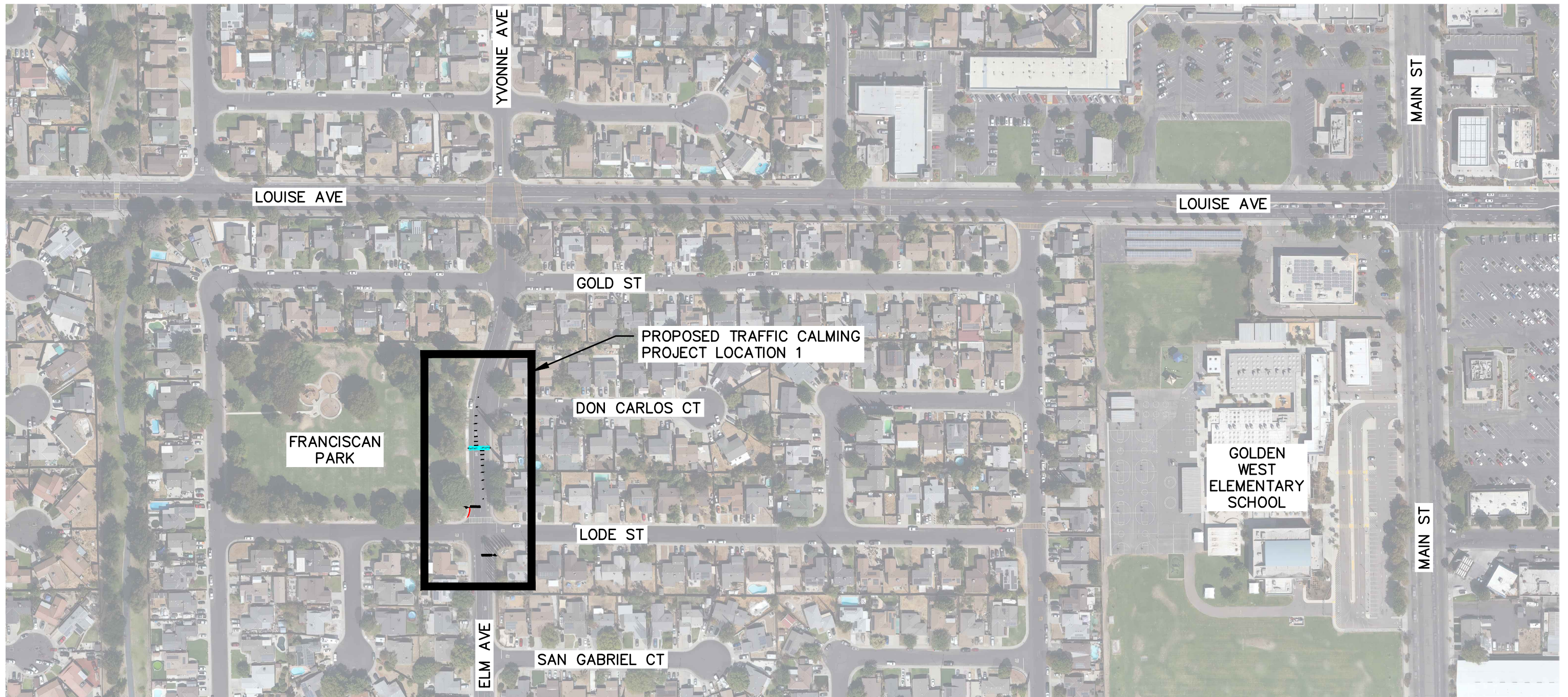


CITY OF MANTECA
DEPARTMENT OF ENGINEERING
1001 WEST CENTER STREET, MANTECA, CALIFORNIA 95337

SCALE	AS SHOWN	TITLE
DESIGNED	JS/BD	
DRAWN	JS	
CHECKED	BD	
DATE	02/25/28	

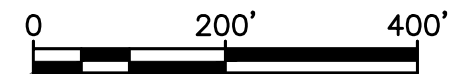
**E EDISON ST
TRAFFIC CALMING
DETAILS 2**

SHEET
5
OF
5 SHEETS



NOTES:

1. WHERE APPLICABLE VERIFY EXISTING UNDERGROUND UTILITIES WHETHER OR NOT THEY ARE SHOWN ON THIS EXHIBIT PRIOR TO EXCAVATION.
2. ALL WORK MUST CONFORM TO THE 2025 EDITION OF CALTRANS STANDARD PLANS AND SPECIFICATIONS AND 2014 REVISION 9 EDITION OF CALIFORNIA MUTCD.
3. ALL SIGN DIMENSIONS AND LETTERING SHALL CONFORM TO CALTRANS OR FHWA SIGN SPECIFICATIONS.
4. THE BOTTOM OF THE PROPOSED SIGNS MUST BE MINIMUM 7 FT ABOVE THE SIDEWALK SURFACE.
5. ANGLE OF SIGN PLACEMENT SHALL BE DETERMINED DURING INSTALLATION FOR BEST LEGIBILITY BY THE TRAFFIC THEY INTEND TO SERVE.
6. VERIFY ALL CONTROLLING DIMENSIONS PRIOR TO CONSTRUCTION.
7. TRIMMING TREES MUST BE APPLIED AND THE LINE OF SIGHT MUST BE TESTED FOR ALL NEWLY INSTALLED SIGNS.
8. SPEED LUMPS MUST BE TRAFFIC LOGIX RUBBER SPEED CUSHIONS 7'L X 6'W X 3"H WITH MUTCD ARROW OR APPROVED EQUAL.
9. ALL EXISTING TRAFFIC SIGNS AND STRIPING SHALL REMAIN IN PLACE UNLESS OTHERWISE NOTED.
10. ALL FADED OR WORN STRIPING SHALL BE REFRESHED AS NEEDED.
11. ALL NEW STRIPING SHALL BE THERMOPLASTIC.



SCALE = 1:200

APPROVED SUBJECT TO THE DATA SHOWN. CITY OF MANTECA IS NOT RESPONSIBLE FOR ERRORS AND OR OMISSIONS THAT MAY BE PRESENT ON THESE PLANS.

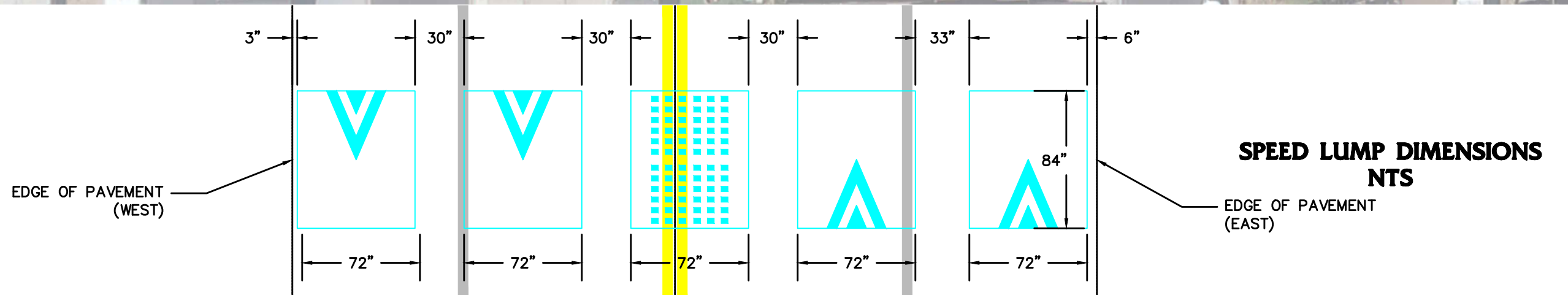
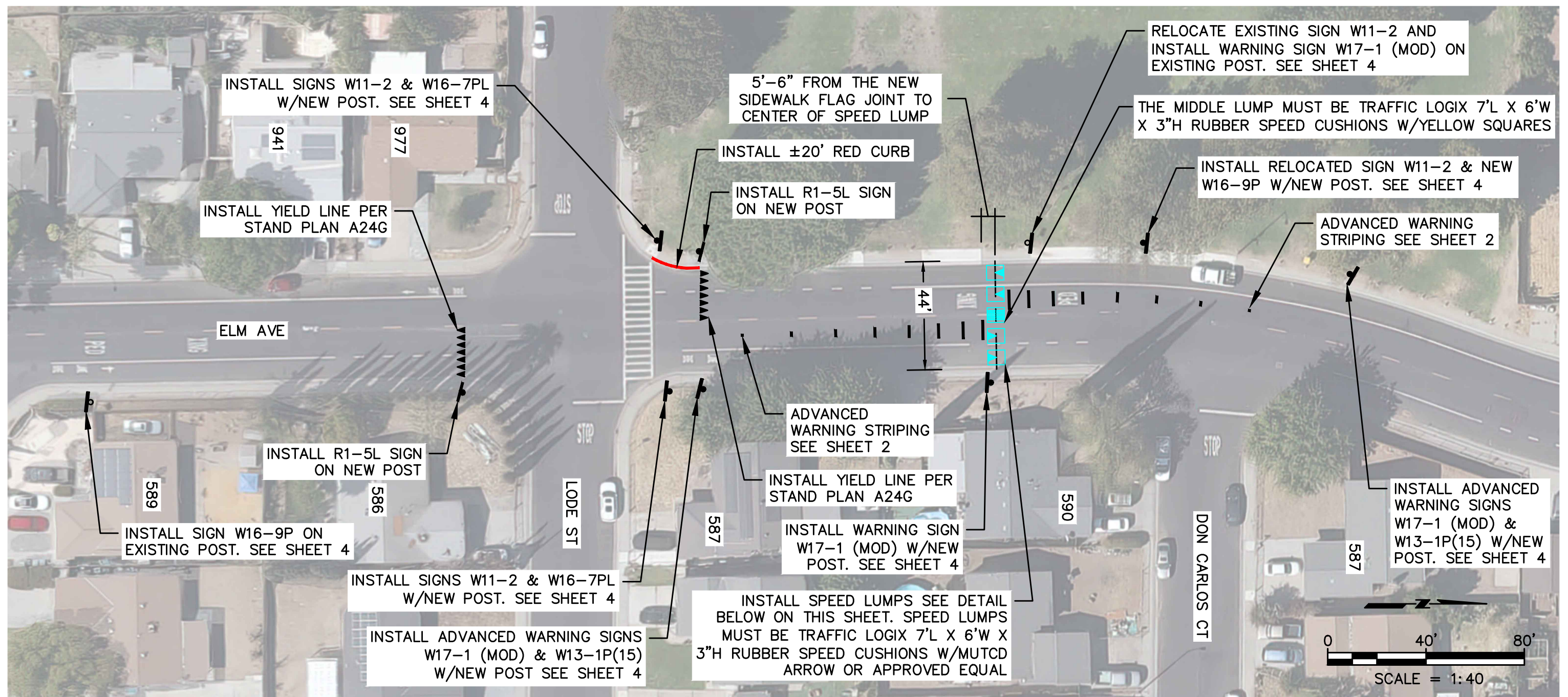


CITY OF MANTECA
 DEPARTMENT OF ENGINEERING
 1001 WEST CENTER STREET, MANTECA, CALIFORNIA 95337

SCALE	AS SHOWN
DESIGNED	JS/BD
DRAWN	JS
CHECKED	BD
DATE	02/25/25

**ELM AVE
 TRAFFIC CALMING
 VICINITY MAP**

SHEET
1
 OF **4** SHEETS



APPROVED SUBJECT TO THE DATA SHOWN. CITY OF MANTECA IS NOT RESPONSIBLE FOR ERRORS AND OR OMISSIONS THAT MAY BE PRESENT ON THESE PLANS.

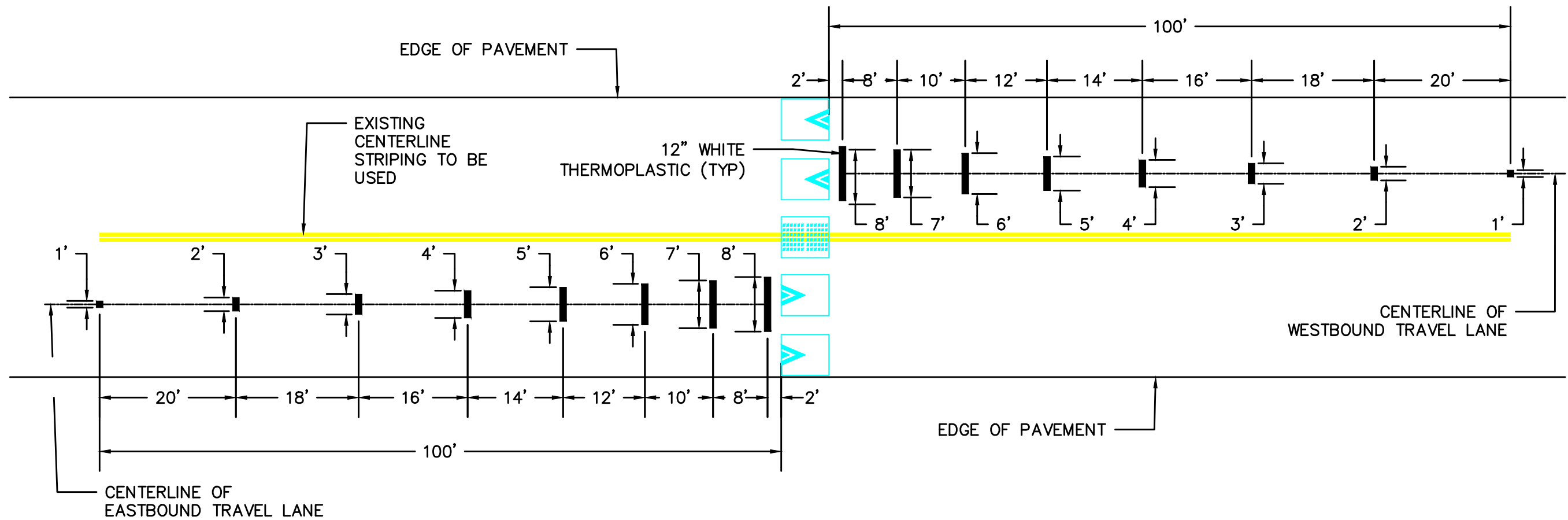


CITY OF MANTECA
 DEPARTMENT OF ENGINEERING
 1001 WEST CENTER STREET, MANTECA, CALIFORNIA 95337

SCALE	AS SHOWN
DESIGNED	JS/BD
DRAWN	JS
CHECKED	BD
DATE	02/25/28

**ELM AVE
 TRAFFIC CALMING
 LOCATION 1**

SHEET
2
 OF **4** SHEETS



**ADVANCED WARNING STRIPING
DETAIL 1.1
NTS**

APPROVED SUBJECT TO THE DATA SHOWN.
CITY OF MANTECA IS NOT RESPONSIBLE
FOR ERRORS AND OR OMISSIONS THAT
MAY BE PRESENT ON THESE PLANS.



CITY OF MANTECA
DEPARTMENT OF ENGINEERING
1001 WEST CENTER STREET, MANTECA, CALIFORNIA 95337

SCALE	AS SHOWN
DESIGNED	JS/BD
DRAWN	JS
CHECKED	BD
DATE	02/25/20

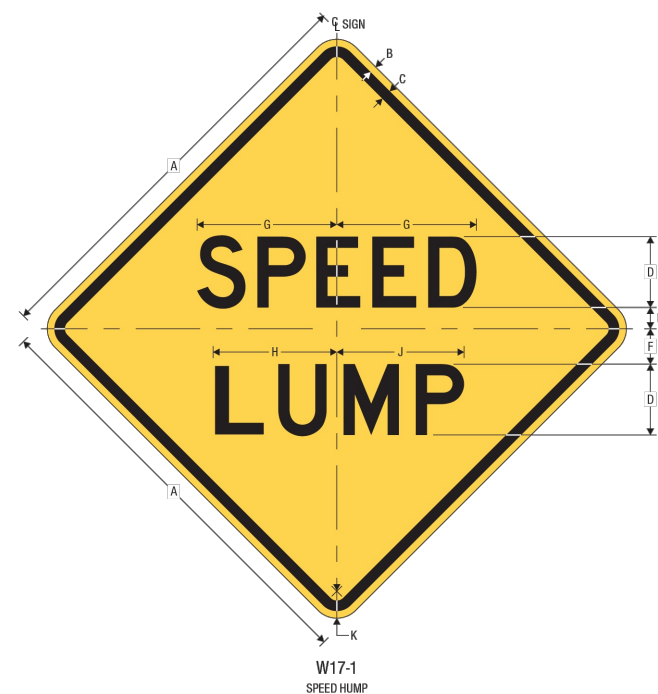
**ELM AVE
TRAFFIC CALMING
DETAILS 1**

SHEET
3
OF **4** SHEETS

ROADSIDE SIGN PANEL QUANTITIES

SIGN QUANTITIES	SIGN DESIGNATION	SIGN MESSAGE/ DESCRIPTION	PANEL SIZE (INCHES)	SINGLE FACED	BACKGROUND		LEGEND & BORDER		PREMIUM PROTECTIVE FILM
					SHEETING COLOR	RETROREFLECTIVE ASTM TYPE	SHEETING COLOR	RETROREFLECTIVE ASTM TYPE	
8	W17-1	SPEED LUMP	30 X 30	X	YELLOW	XI	BLACK	-	X
4	W13-1P(15)	15 MPH	18 X 18	X	YELLOW	XI	BLACK	-	X
2	W16-9P	AHEAD (PLAQUE)	24 X 12	X	FLUORESCENT YELLOW-GREEN	XI	BLACK	-	X
2	W11-2	PEDESTRIAN	30 X 30	X	FLUORESCENT YELLOW-GREEN	XI	BLACK	-	X
2	W16-7P(L)	LEFT DIAGONAL ARROW	24 X 12	X	FLUORESCENT YELLOW-GREEN	XI	BLACK	-	X
2	R1-5L	YIELD TO PEDESTRIANS	36 X 36	X	WHITE	IX	RED/BLACK	XI/-	X

NOTE: SIGN PANEL RETROREFLECTIVE MATERIAL SHALL BE PER CALTRANS AUTHORIZED MATERIALS LIST.



A	B	C	D	E	F	G	H	J	K
24	0.375	0.625	4 D	1.25	2	7.886	6.961	7.210	1.5
30	0.5	0.75	5 D	1.5	2.5	9.857	8.732	8.982	1.875
36	0.625	0.875	6 D	1.875	3	11.828	10.379	10.878	2.25
48	0.75	1.25	8 D	2.5	4	15.771	13.921	14.421	3

COLORS: LEGEND, BORDER - BLACK
BACKGROUND - YELLOW (RETROREFLECTIVE)



W13-1
ADVISORY SPEED (ENGLISH)

*Series 2000 Standard Alphabets.
**Optically space numerals about vertical centerline.

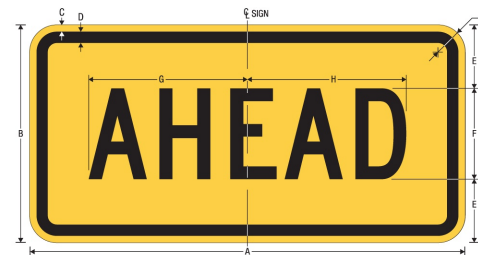
A	B	C	D	E	F	G	H	J
18	.375	.625	2.5	8 E	2	3 E	4.723	1.5
24	.375	.625	3.625	10 E	2.75	4 E	6.284	1.5
30	.5	.75	4.5	12 E	4	5 E	7.416	1.875

WARNING SIGN COLORS:

LEGEND - BLACK
BACKGROUND - YELLOW (RETROREFLECTIVE)

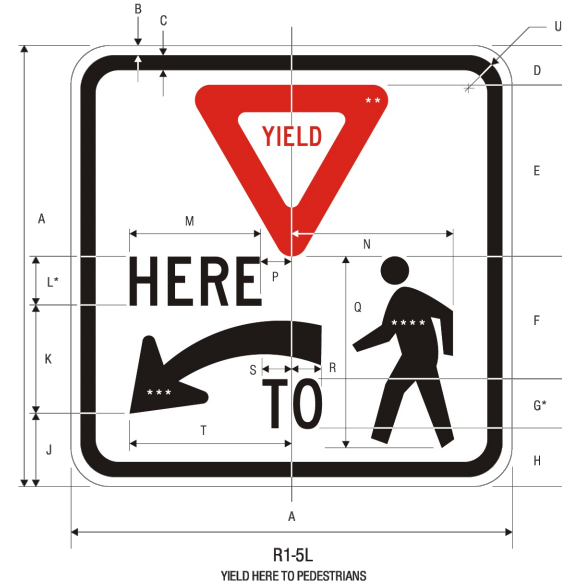
TTC SIGN COLORS:

LEGEND - BLACK
BACKGROUND - ORANGE (RETROREFLECTIVE)



W16-9P
AHEAD (PLAQUE)

A	B	C	D	E	F	G	H	J
24	12	0.375	0.625	3.5	5 C	8.753	8.753	1.5
30	18	0.375	0.625	5.5	7 C	12.255	12.254	1.5

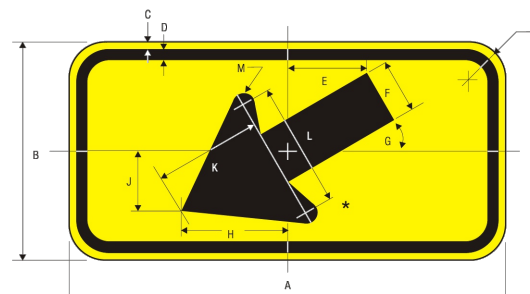


R1-5L
YIELD HERE TO PEDESTRIANS

A	B	C	D	E	F	G	H	J	K	L
18	.375	.625	1.625	7	5	2 C	2.375	3	4.375	2 C
30	.5	.75	2.75	11.5	8.5	3 C	4.25	5	7.25	3 C
36	.625	.875	3.25	14	10	4 C	4.75	6	8.75	4 C

M	N	P	Q	R	S	T	U
5.384	6.605	1.240	7.805	1.220	1.220	6.605	1.5
8.061	11	2	13	1.820	1.820	11	1.875
10.728	13.21	2.48	15.61	2.44	2.44	13.21	2.25

*Series 2000 Standard Alphabets.
**Insert R1-2 and size to fit.
***Insert R10-6a Arrow and size to fit.
****See 6-10 for design detail.



W16-7pL
LEFT DIAGONAL ARROW PLAQUE

A	B	C	D	E	F	G	H	J	K	L	M	N
24	12	.375	.625	4.323	3	30°	5.844	3.282	5.884	6.925	.600	1.5
30	18	.5	.75	6.524	4.5	30°	8.766	4.923	8.846	10.407	.920	1.875

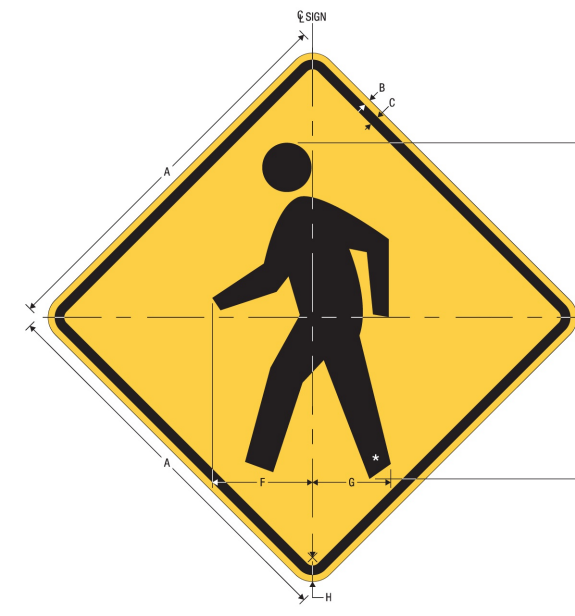


W17-1
(MODIFIED)



W13-1P (15)
W13-1P (15)

WARNING SIGNS
DETAIL 1.2
NTS



W11-2
PEDESTRIAN

* See page 8-7 for symbol design.

A	B	C	D	E	F	G	H
18	0.375	0.625	8	7.5	4.75	3.473	1.5
30	0.5	0.75	13.5	12.5	7.75	6.043	1.875
36	0.625	0.875	16	15	9.25	7.195	2.25
48	0.75	1.25	22	20	12.5	9.781	3

APPROVED SUBJECT TO THE DATA SHOWN.
CITY OF MANTECA IS NOT RESPONSIBLE
FOR ERRORS AND OR OMISSIONS THAT
MAY BE PRESENT ON THESE PLANS.



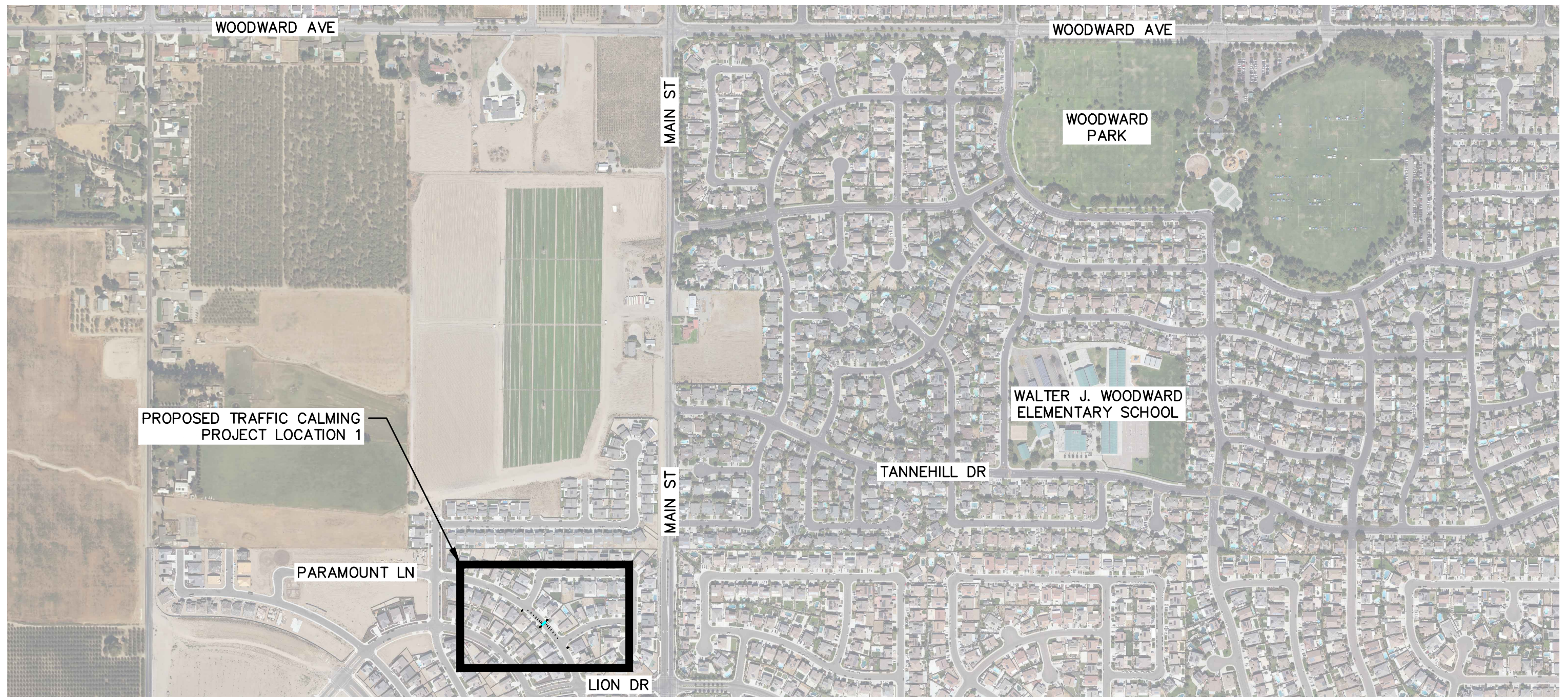
CITY OF MANTECA
DEPARTMENT OF ENGINEERING
1001 WEST CENTER STREET, MANTECA, CALIFORNIA 95337

SCALE	AS SHOWN
DESIGNED	JS/BD
DRAWN	JS
CHECKED	BD
DATE	02/25/28

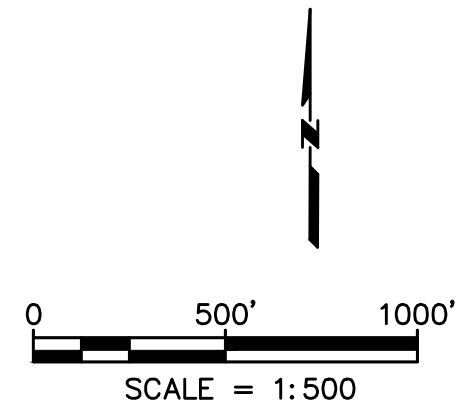
ELM AVE
TRAFFIC CALMING
DETAILS 2

SHEET
4
OF 4 SHEETS

\\utopia\eng\p\WEN\904_Traffic_Calming\72-2025-08-05_ParamountLn\08_Stage 2_Proposal\08-1_Exhibit\08-1a_AutoCAD\Paramount Ln - Traffic Calming.dwg



- NOTES:
1. WHERE APPLICABLE VERIFY EXISTING UNDERGROUND UTILITIES WHETHER OR NOT THEY ARE SHOWN ON THIS EXHIBIT PRIOR TO EXCAVATION.
 2. ALL WORK MUST CONFORM TO THE 2025 EDITION OF CALTRANS STANDARD PLANS AND SPECIFICATIONS AND 2014 REVISION 9 EDITION OF CALIFORNIA MUTCD.
 3. ALL SIGN DIMENSIONS AND LETTERING SHALL CONFORM TO CALTRANS OR FHWA SIGN SPECIFICATIONS.
 4. THE BOTTOM OF THE PROPOSED SIGNS MUST BE MINIMUM 7 FT ABOVE THE SIDEWALK SURFACE.
 5. ANGLE OF SIGN PLACEMENT SHALL BE DETERMINED DURING INSTALLATION FOR BEST LEGIBILITY BY THE TRAFFIC THEY INTEND TO SERVE.
 6. VERIFY ALL CONTROLLING DIMENSIONS PRIOR TO CONSTRUCTION.
 7. TRIMMING TREES MUST BE APPLIED AND THE LINE OF SIGHT MUST BE TESTED FOR ALL NEWLY INSTALLED SIGNS.
 8. SPEED LUMPS MUST BE TRAFFIC LOGIX RUBBER SPEED CUSHIONS 7'L X 6'W X 3"H WITH MUTCD ARROW OR APPROVED EQUAL.
 9. ALL EXISTING TRAFFIC SIGNS AND STRIPING SHALL REMAIN IN PLACE UNLESS OTHERWISE NOTED.
 10. ALL FADED OR WORN STRIPING SHALL BE REFRESHED AS NEEDED.
 11. ALL NEW STRIPING SHALL BE THERMOPLASTIC.



APPROVED SUBJECT TO THE DATA SHOWN. CITY OF MANTECA IS NOT RESPONSIBLE FOR ERRORS AND OR OMISSIONS THAT MAY BE PRESENT ON THESE PLANS.



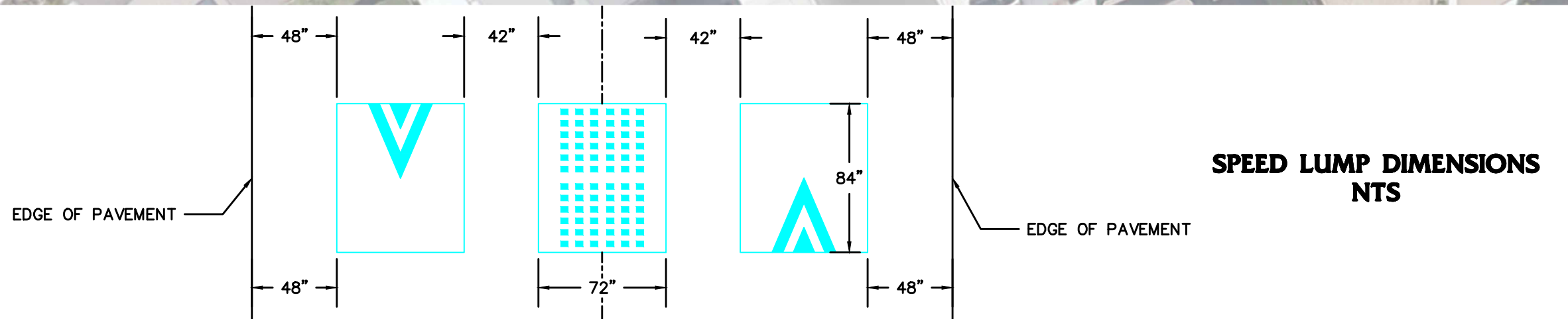
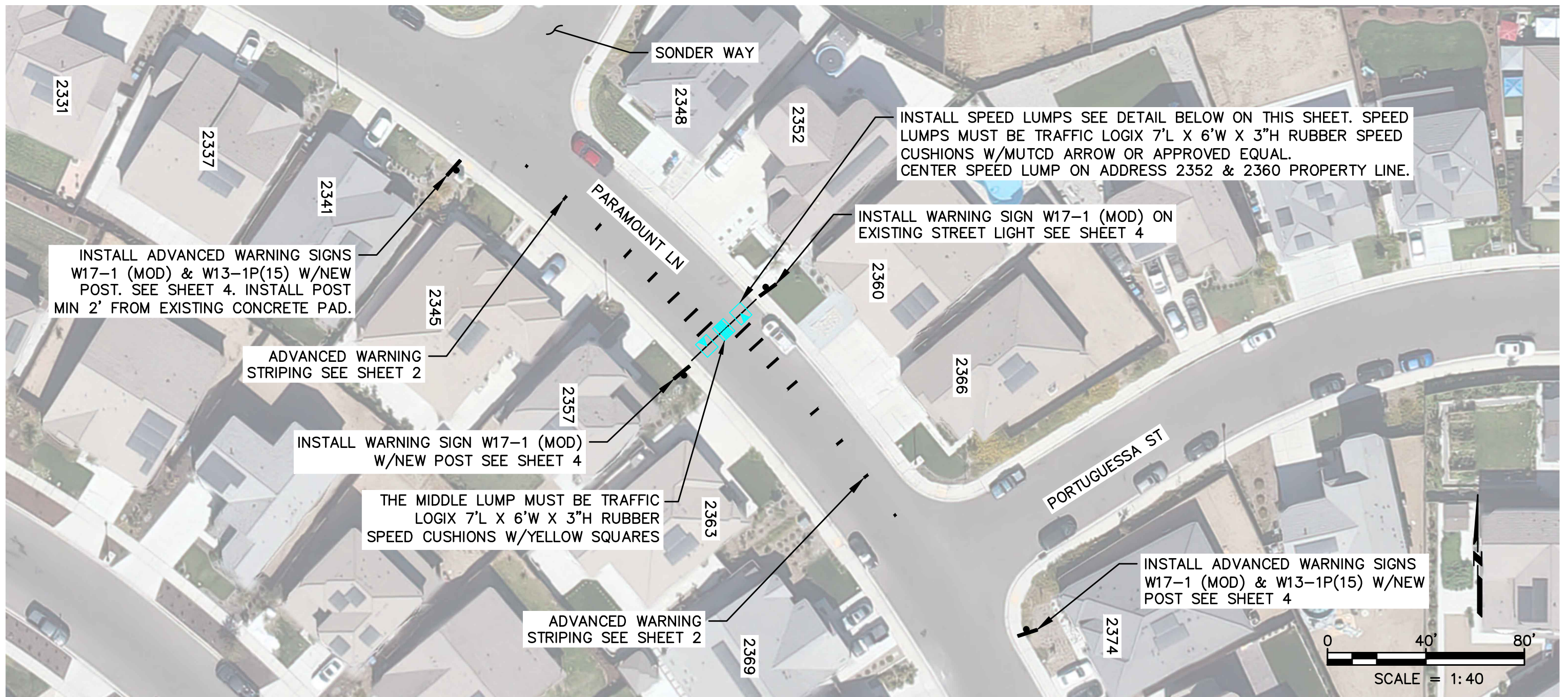
CITY OF MANTECA
DEPARTMENT OF ENGINEERING
1001 WEST CENTER STREET, MANTECA, CALIFORNIA 95337

SCALE	AS SHOWN
DESIGNED	JS/BD
DRAWN	JS
CHECKED	BD
DATE	01/29/26

**PARAMOUNT LN
TRAFFIC CALMING
VICINITY MAP**

SHEET
1
OF **4** SHEETS

\\utopia\Eng\p\W\EN\9\904_Traffic Engineering\804-02_Traffic Calming\72-2025-08-05_Paramount Ln\08_Stage 2\Proposals\08-1_Exhibit\08-1a_AutoCAD\Paramount Ln - Traffic Calming.dwg



APPROVED SUBJECT TO THE DATA SHOWN. CITY OF MANTECA IS NOT RESPONSIBLE FOR ERRORS AND OR OMISSIONS THAT MAY BE PRESENT ON THESE PLANS.



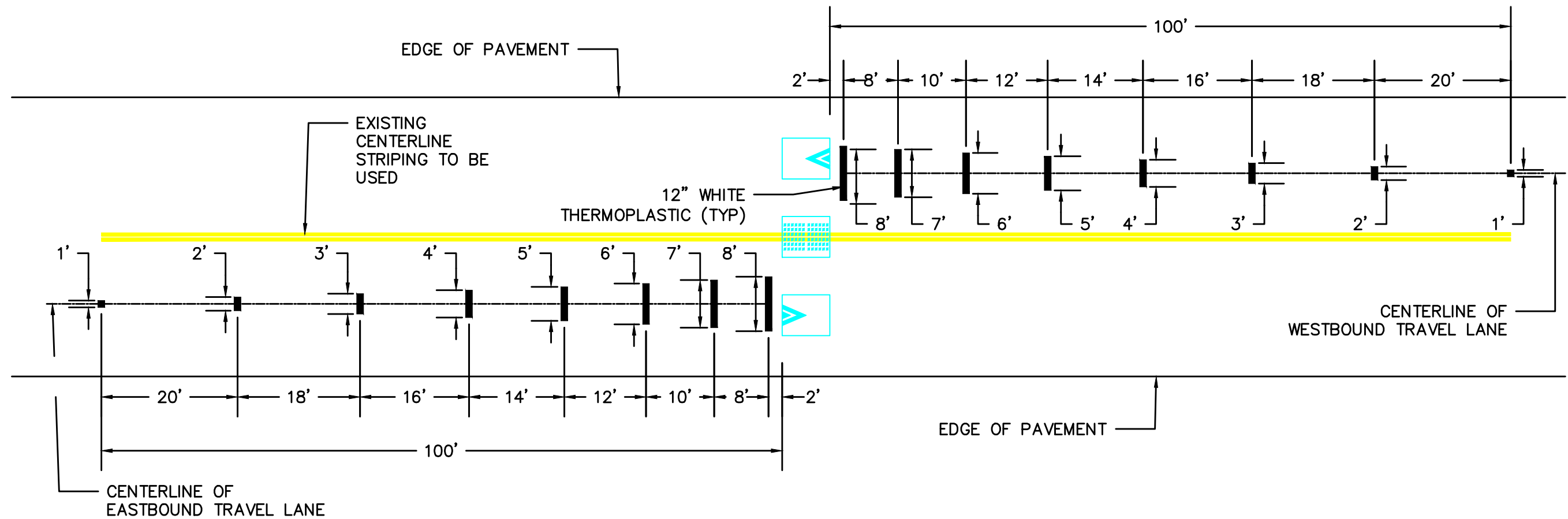
CITY OF MANTECA
DEPARTMENT OF ENGINEERING
1001 WEST CENTER STREET, MANTECA, CALIFORNIA 95337

SCALE	AS SHOWN
DESIGNED	JS/BD
DRAWN	JS
CHECKED	BD
DATE	01/29/28

**PARAMOUNT LN
TRAFFIC CALMING
LOCATION 1**

SHEET
2
OF **4** SHEETS

\\utopia\eng\p\WEN\9104 - Traffic Engineering\804-02 Traffic Calming\72-2025-08-05 Paramount Ln\08 Stage 2\Proposals\08-1 Exhibit\08-1a AutoCAD\Paramount Ln - Traffic Calming.dwg



**ADVANCED WARNING STRIPING
DETAIL 1.1
NTS**

APPROVED SUBJECT TO THE DATA SHOWN.
CITY OF MANTECA IS NOT RESPONSIBLE
FOR ERRORS AND OR OMISSIONS THAT
MAY BE PRESENT ON THESE PLANS.



CITY OF MANTECA
DEPARTMENT OF ENGINEERING
1001 WEST CENTER STREET, MANTECA, CALIFORNIA 95337

SCALE	AS SHOWN
DESIGNED	JS/BD
DRAWN	JS
CHECKED	BD
DATE	01/29/26

**PARAMOUNT LN
TRAFFIC CALMING
DETAILS 1**

SHEET
3
OF **4** SHEETS

ROADSIDE SIGN PANEL QUANTITIES

SIGN QUANTITIES	SIGN DESIGNATION	SIGN MESSAGE/ DESCRIPTION	PANEL SIZE (INCHES)	SINGLE FACED	BACKGROUND		LEGEND & BORDER		PREMIUM PROTECTIVE FILM
					SHEETING COLOR	RETROREFLECTIVE ASTM TYPE	SHEETING COLOR	RETROREFLECTIVE ASTM TYPE	
8	W17-1 (MOD)	SPEED LUMP	30 X 30	X	YELLOW	XI	BLACK	-	X
4	W13-1P (15)	15 MPH	18 X 18	X	YELLOW	XI	BLACK	-	X

NOTE: SIGN PANEL RETROREFLECTIVE MATERIAL SHALL BE PER CALTRANS AUTHORIZED MATERIALS LIST.

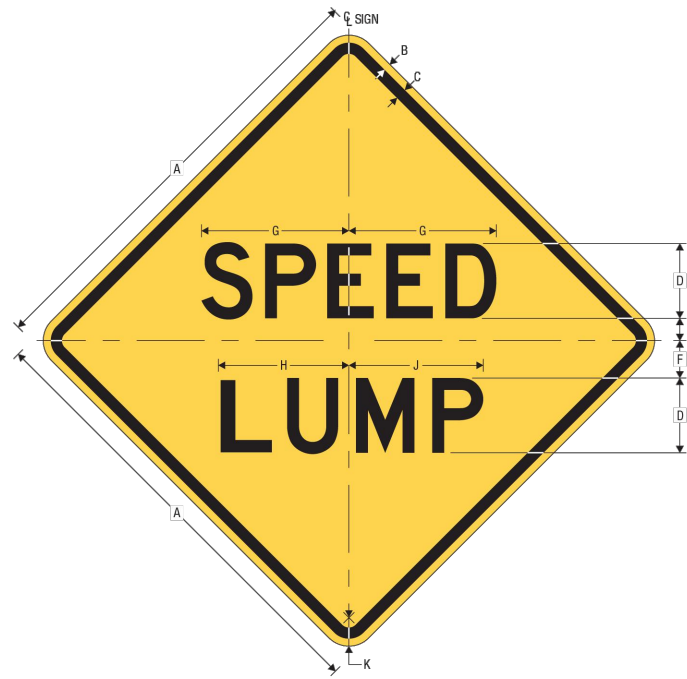


W17-1 (MODIFIED)



W13-1P (15)

**WARNING SIGNS
DETAIL 1.2
NTS**



W17-1
SPEED HUMP

A	B	C	D	E	F	G	H	J	K
24	0.375	0.625	4 D	1.25	2	7.886	6.961	7.210	1.5
30	0.5	0.75	5 D	1.5	2.5	9.857	8.732	8.982	1.875
36	0.625	0.875	6 D	1.875	3	11.828	10.379	10.878	2.25
48	0.75	1.25	8 D	2.5	4	15.771	13.921	14.421	3

COLORS: LEGEND, BORDER - BLACK
BACKGROUND - YELLOW (RETROREFLECTIVE)

W17-1
Issued 3/1/2012



W13-1
ADVISORY SPEED (ENGLISH)

*Series 2000 Standard Alphabets.
**Optically space numerals about vertical centerline.

A	B	C	D	E	F	G	H	J
18	.375	.625	2.5	8 E	2	3 E	4.723	1.5
24	.375	.625	3.625	10 E	2.75	4 E	6.284	1.5
30	.5	.75	4.5	12 E	4	5 E	7.416	1.875

WARNING SIGN COLORS:

LEGEND - BLACK
BACKGROUND - YELLOW (RETROREFLECTIVE)

TTC SIGN COLORS:

LEGEND - BLACK
BACKGROUND - ORANGE (RETROREFLECTIVE)

2-108

APPROVED SUBJECT TO THE DATA SHOWN.
CITY OF MANTECA IS NOT RESPONSIBLE
FOR ERRORS AND OR OMISSIONS THAT
MAY BE PRESENT ON THESE PLANS.



CITY OF MANTECA
DEPARTMENT OF ENGINEERING
1001 WEST CENTER STREET, MANTECA, CALIFORNIA 95337

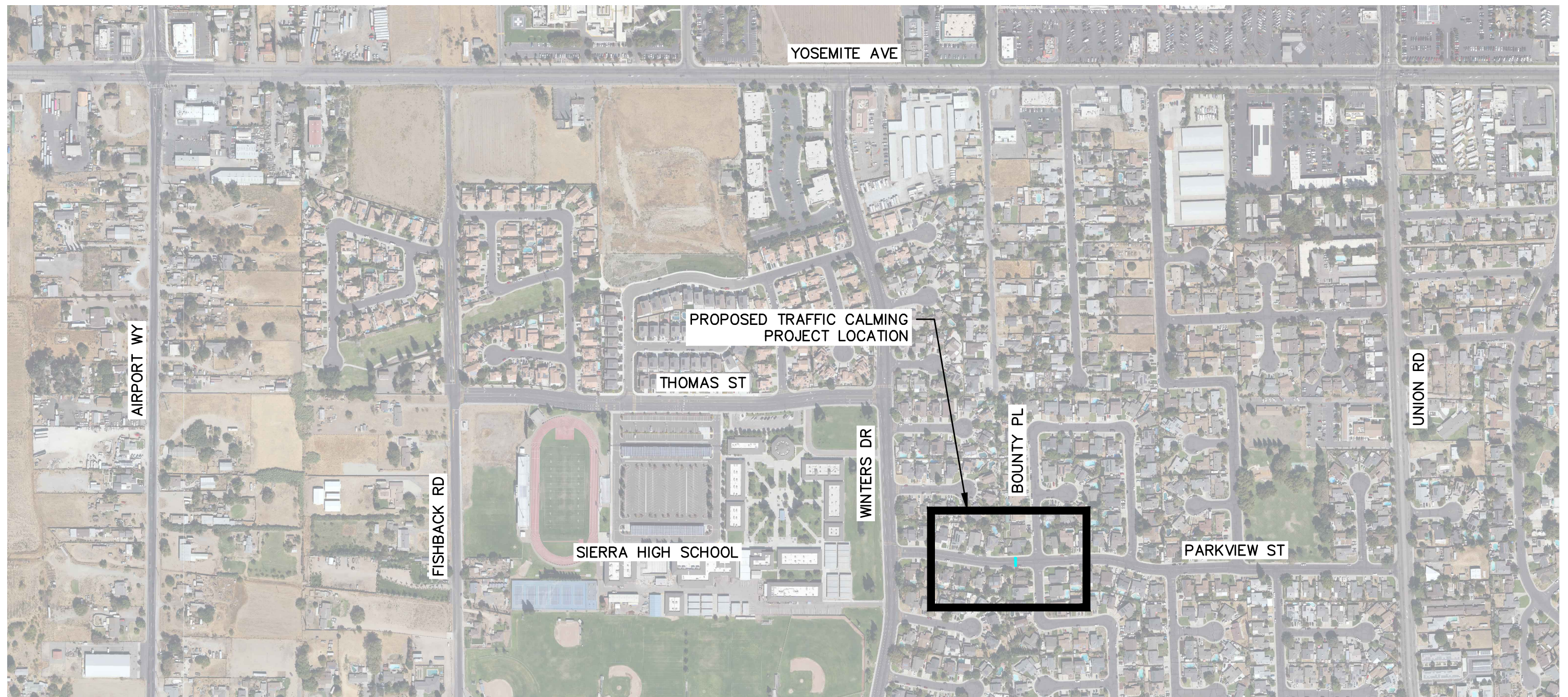
SCALE	AS SHOWN
DESIGNED	JS/BD
DRAWN	JS
CHECKED	BD
DATE	01/29/20

**PARAMOUNT LN
TRAFFIC CALMING
DETAILS 2**

SHEET
4
OF **4** SHEETS

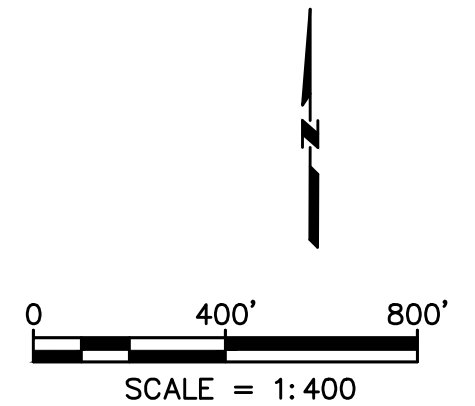
\\utopia\eng\p\WEN\9504 - Traffic Calming\804-02 - Traffic Calming\72-2025-08-05 - Paramount Ln\08 - Stage 2 - Proposal\08-1 - Exhibit\08-1a - AutoCAD\Paramount Ln - Traffic Calming.dwg

\\utopia\eng\p\W\EN\9\904_Traffic_Engineering\804-02_Traffic_Calming\81-2025-09-23_Parkview_S\03_Stage_2_Proposal\08-1_Exhibit\08-1a_AutoCAD\1-1_Parkview_S1-Traffic_Calming.dwg



NOTES:

1. WHERE APPLICABLE VERIFY EXISTING UNDERGROUND UTILITIES WHETHER OR NOT THEY ARE SHOWN ON THIS EXHIBIT PRIOR TO EXCAVATION.
2. ALL WORK MUST CONFORM TO THE 2025 EDITION OF CALTRANS STANDARD PLANS AND SPECIFICATIONS AND 2026 EDITION OF CALIFORNIA MUTCD.
3. ALL SIGN DIMENSIONS AND LETTERING SHALL CONFORM TO CALTRANS OR FHWA SIGN SPECIFICATIONS.
4. THE BOTTOM OF THE PROPOSED SIGNS MUST BE MINIMUM 7 FT ABOVE THE SIDEWALK SURFACE.
5. ANGLE OF SIGN PLACEMENT SHALL BE DETERMINED DURING INSTALLATION FOR BEST LEGIBILITY BY THE TRAFFIC THEY INTEND TO SERVE.
6. VERIFY ALL CONTROLLING DIMENSIONS PRIOR TO CONSTRUCTION.
7. TRIMMING TREES MUST BE APPLIED AND THE LINE OF SIGHT MUST BE TESTED FOR ALL NEWLY INSTALLED SIGNS.
8. SPEED LUMPS MUST BE TRAFFIC LOGIX RUBBER SPEED CUSHIONS 7'L X 6'W X 3"H WITH MUTCD ARROW OR APPROVED EQUAL.
9. ALL EXISTING TRAFFIC SIGNS AND STRIPING SHALL REMAIN IN PLACE UNLESS OTHERWISE NOTED.
10. ALL FADED OR WORN STRIPING SHALL BE REFRESHED AS NEEDED.
11. ALL NEW STRIPING SHALL BE THERMOPLASTIC.



APPROVED SUBJECT TO THE DATA SHOWN.
CITY OF MANTECA IS NOT RESPONSIBLE
FOR ERRORS AND OR OMISSIONS THAT
MAY BE PRESENT ON THESE PLANS.



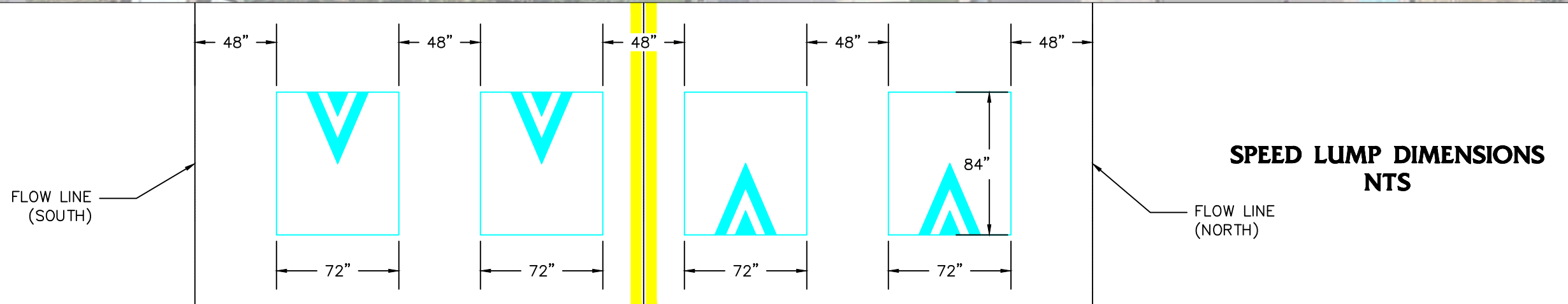
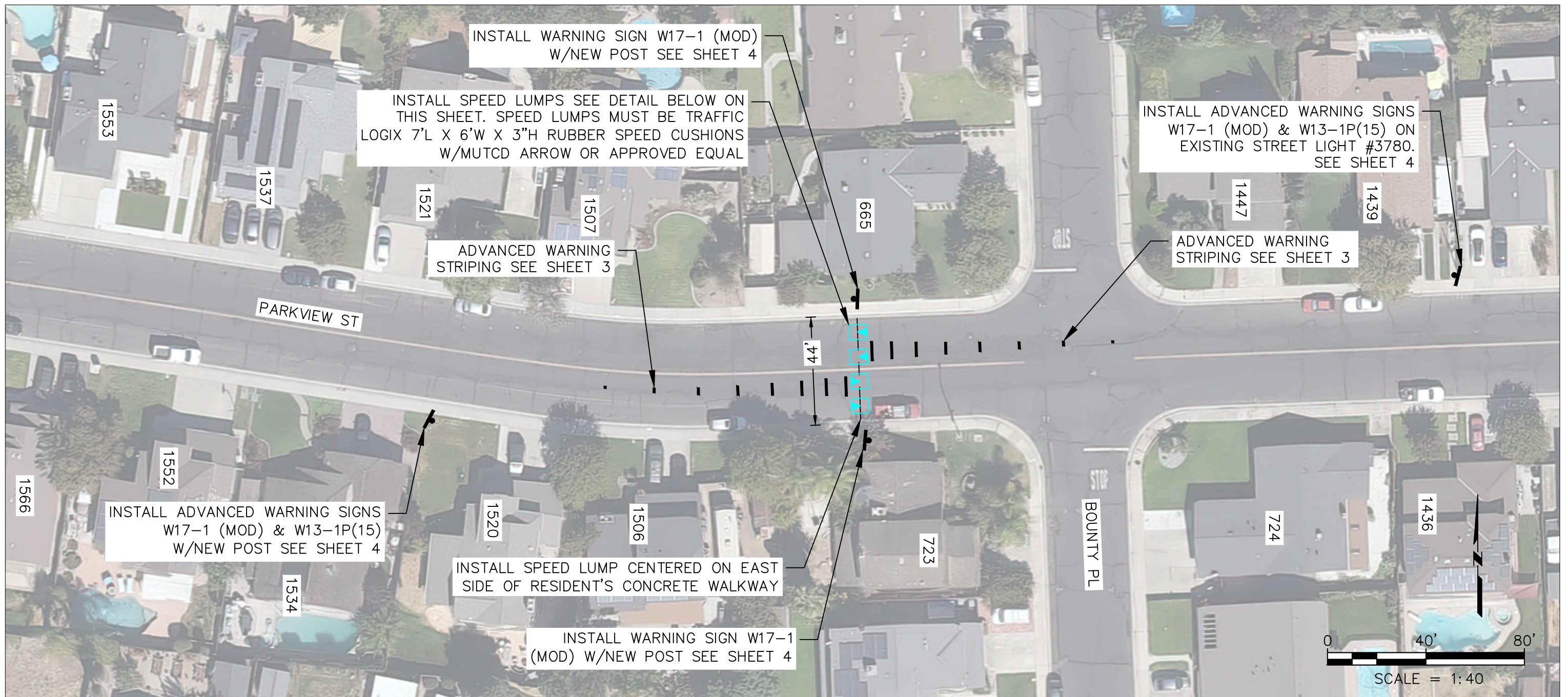
CITY OF MANTECA
DEPARTMENT OF ENGINEERING
1001 WEST CENTER STREET, MANTECA, CALIFORNIA 95337

SCALE	AS SHOWN
DESIGNED	JS/BD
DRAWN	JS
CHECKED	BD
DATE	01/29/26

**PARKVIEW ST
TRAFFIC CALMING
VICINITY MAP**

SHEET
1
OF **4** SHEETS

\\utopia\eng\p\w\eng\804-02_Traffic_Calming\804-02_Parkview St\03 Stage 2_Proposal\08-1_Exhibit\08-1a_AutoCAD\1+Parkview St_Traffic_Calming.dwg



APPROVED SUBJECT TO THE DATA SHOWN.
 CITY OF MANTECA IS NOT RESPONSIBLE
 FOR ERRORS AND OR OMISSIONS THAT
 MAY BE PRESENT ON THESE PLANS.



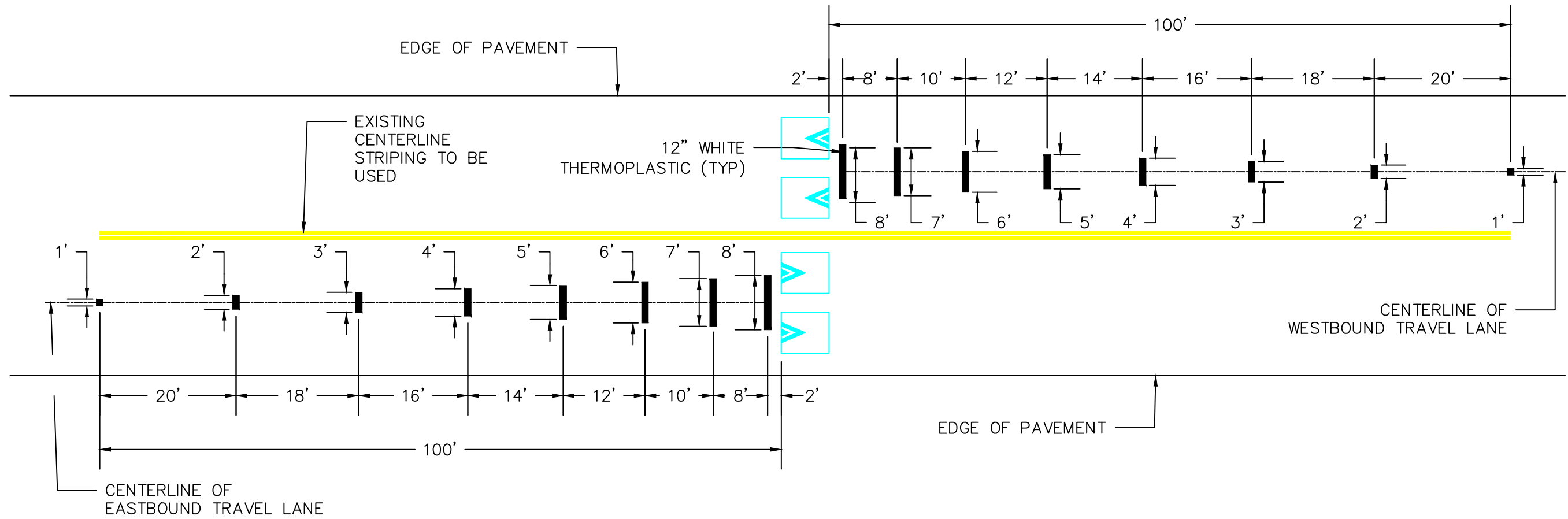
CITY OF MANTECA
 DEPARTMENT OF ENGINEERING
 1001 WEST CENTER STREET, MANTECA, CALIFORNIA 95337

SCALE	AS SHOWN
DESIGNED	JS/BD
DRAWN	JS
CHECKED	BD
DATE	01/28/26

PARKVIEW ST
TRAFFIC CALMING
LOCATION

SHEET
2
 OF **4** SHEETS

\\utopia\eng\p\W\EN\9104 - Traffic Engineering\804-02 Traffic Calming\81-2025-09-23 Parkview St\03 State 2\Proposal\08-1 Exhibit\08-1a AutoCAD\1+Parkview St Traffic Calming.dwg



**ADVANCED WARNING STRIPING
DETAIL 1.1
NTS**

APPROVED SUBJECT TO THE DATA SHOWN.
CITY OF MANTECA IS NOT RESPONSIBLE
FOR ERRORS AND OR OMISSIONS THAT
MAY BE PRESENT ON THESE PLANS.



CITY OF MANTECA
DEPARTMENT OF ENGINEERING
1001 WEST CENTER STREET, MANTECA, CALIFORNIA 95337

SCALE	AS SHOWN
DESIGNED	JS/BD
DRAWN	JS
CHECKED	BD
DATE	01/28/26

**PARKVIEW ST
TRAFFIC CALMING
DETAILS 1**

SHEET
3
OF **4** SHEETS

ROADSIDE SIGN PANEL QUANTITIES

SIGN QUANTITIES	SIGN DESIGNATION	SIGN MESSAGE/ DESCRIPTION	PANEL SIZE (INCHES)	SINGLE FACED	BACKGROUND		LEGEND & BORDER		PREMIUM PROTECTIVE FILM
					SHEETING COLOR	RETROREFLECTIVE ASTM TYPE	SHEETING COLOR	RETROREFLECTIVE ASTM TYPE	
4	W17-1 (MOD)	SPEED LUMP	30 X 30	X	YELLOW	XI	BLACK	-	X
2	W13-1P (15)	15 MPH	18 X 18	X	YELLOW	XI	BLACK	-	X

NOTE: SIGN PANEL RETROREFLECTIVE MATERIAL SHALL BE PER CALTRANS AUTHORIZED MATERIALS LIST.

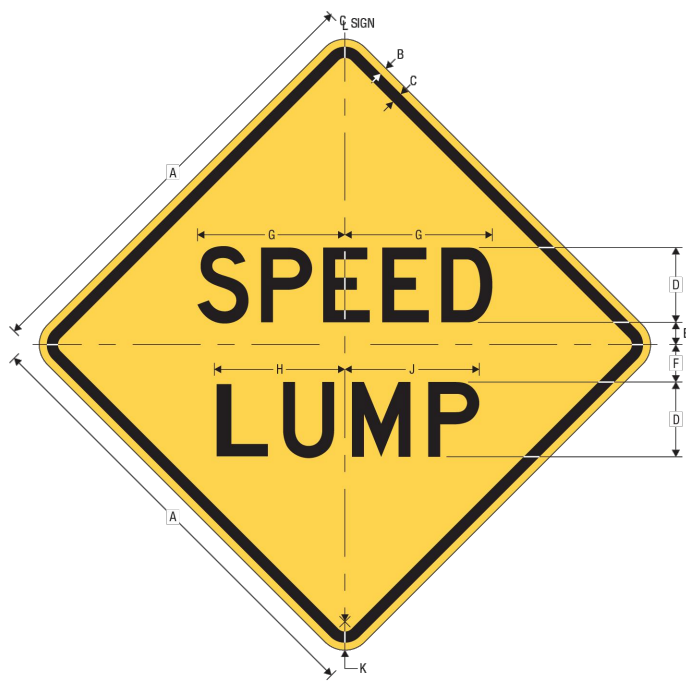


W17-1 (MODIFIED)



W13-1P (15)

**WARNING SIGNS
DETAIL 1.2
NTS**



W17-1
SPEED HUMP

A	B	C	D	E	F	G	H	J	K
24	0.375	0.625	4 D	1.25	2	7.886	6.961	7.210	1.5
30	0.5	0.75	5 D	1.5	2.5	9.857	8.732	8.982	1.875
36	0.625	0.875	6 D	1.875	3	11.828	10.379	10.878	2.25
48	0.75	1.25	8 D	2.5	4	15.771	13.921	14.421	3

COLORS: LEGEND, BORDER - BLACK
BACKGROUND - YELLOW (RETROREFLECTIVE)

W17-1
Issued 3/1/2012



W13-1
ADVISORY SPEED (ENGLISH)

*Series 2000 Standard Alphabets.
**Optically space numerals about vertical centerline.

A	B	C	D	E	F	G	H	J
18	.375	.625	2.5	8 E	2	3 E	4.723	1.5
24	.375	.625	3.625	10 E	2.75	4 E	6.284	1.5
30	.5	.75	4.5	12 E	4	5 E	7.416	1.875

WARNING SIGN COLORS:

LEGEND - BLACK
BACKGROUND - YELLOW (RETROREFLECTIVE)

TTC SIGN COLORS:

LEGEND - BLACK
BACKGROUND - ORANGE (RETROREFLECTIVE)

2-108

\\utopia\eng\p\WEN\904-02 Traffic Engineering\804-02 Traffic Calming\81-2025-09-23 Parkview St\03 State 2\Proposal\08-1 Exhibit\08-1a AutoCAD\1+Parkview St Traffic Calming.dwg

APPROVED SUBJECT TO THE DATA SHOWN.
CITY OF MANTECA IS NOT RESPONSIBLE
FOR ERRORS AND OR OMISSIONS THAT
MAY BE PRESENT ON THESE PLANS.



CITY OF MANTECA
DEPARTMENT OF ENGINEERING
1001 WEST CENTER STREET, MANTECA, CALIFORNIA 95337

SCALE	AS SHOWN
DESIGNED	JS/BD
DRAWN	JS
CHECKED	BD
DATE	01/28/26

**PARKVIEW ST
TRAFFIC CALMING
DETAILS 2**

SHEET
4
OF
4 SHEETS