

OWNERS' STATEMENT:

WE, THE UNDERSIGNED, HEREBY STATE THAT WE ARE ALL THE PARTIES HAVING RECORD TITLE INTEREST IN THE LANDS SUBDIVIDED AND SHOWN ON THIS FINAL MAP OF "TRACT NO. 4148, SUBDIVISIONS OF SAN JOAQUIN COUNTY, GRIFFIN PARK UNIT NO. 8", CITY OF MANTECA, CALIFORNIA, AND WE HEREBY CONSENT TO THE PREPARATION AND FILING OF THIS FINAL MAP IN THE OFFICE OF THE COUNTY RECORDER OF SAN JOAQUIN COUNTY, CALIFORNIA.

WE ALSO OFFER THE REAL PROPERTY DESCRIBED BELOW, DEDICATED AS AN EASEMENT FOR PUBLIC PURPOSES, ALL PUBLIC UTILITY EASEMENTS, AND IN FEE, ALL STREET RIGHTS-OF-WAY AND THE 15.00-FOOT WIDENING OF RIGHT-OF-WAY ALONG TINNIN ROAD AND RESERVE TO THE CITY OF MANTECA, THE RIGHT TO CONTROL ACCESS OVER AND ACROSS THE ONE-FOOT ACCESS RESERVE STRIPS AND RELINQUISH TO THE CITY OF MANTECA ALL ACCESS RIGHTS OF LOTS 187 THROUGH 199 AND LOT 253 TO AND FROM TINNIN ROAD, LOTS 176 THROUGH 187 AND LOTS 293 THROUGH 297 TO AND FROM HOT SPRINGS DRIVE, LOTS 283 THROUGH 293 TO AND FROM WEST ANTONE RAYMUS PARKWAY AND LOTS 176 AND 297 TO AND FROM TULUM WAY, ALL AS SHOWN ON THIS FINAL MAP.

OWNER: PILLSBURY ROAD PARTNERS, LLC, A CALIFORNIA LIMITED LIABILITY COMPANY

BY: Albert G. Boyce 5-9-24
ALBERT G. BOYCE, MANAGER DATE

BENEFICIARY: WELLS FARGO BANK, N.A., AS BENEFICIARY UNDER DEED OF TRUST RECORDED JANUARY 8, 2016 AS DOCUMENT NO. 2016-003075, AS MODIFIED AUGUST 17, 2017 AS DOCUMENT NO. 2017-094226, AS MODIFIED MARCH 9, 2018 AS DOCUMENT NO. 2018-026661, DECEMBER 28, 2018 AS DOCUMENT NO. 2018-145508, NOVEMBER 6, 2019 AS DOCUMENT NO. 2019-128008 AND JULY 20, 2021 AS DOCUMENT NO. 2021-121109, AS MODIFIED NOVEMBER 6, 2020 AS DOCUMENT NO. 2020-151806, AS MODIFIED OCTOBER 3, 2022 AS DOCUMENT NO. 2022-114801 IN THE OFFICIAL RECORDS OF SAN JOAQUIN COUNTY, HEREBY CONSENT TO THE FILING OF THIS MAP.

BY: Nathan E. Baker 5-28-24
DATE

PRINT: Nathan E. Baker, Director

BENEFICIARY: WELLS FARGO BANK, NATIONAL ASSOCIATION, AS BENEFICIARY UNDER SECOND AMENDED AND RESTATED CONSTRUCTION DEED OF TRUST RECORDED AUGUST 29, 2023 AS INSTRUMENT NO. 2023-068581 IN THE OFFICIAL RECORDS OF SAN JOAQUIN COUNTY, HEREBY CONSENT TO THE FILING OF THIS MAP.

BY: Nathan E. Baker 5-28-24
DATE

PRINT: Nathan E. Baker, Director

NOTE:

SEE SHEET 7 OF 8 FOR NOTARY ACKNOWLEDGEMENTS

DEVELOPMENT SERVICES DEPARTMENT STATEMENT:

THE FINAL MAP OF "TRACT NO. 4148, SUBDIVISIONS OF SAN JOAQUIN COUNTY, GRIFFIN PARK UNIT NO. 8", CITY OF MANTECA, CALIFORNIA CONFORMS TO THE APPROVED GENERAL PLAN AND THE MANTECA MUNICIPAL CODE.

DATED _____ DAY OF _____, 20__.

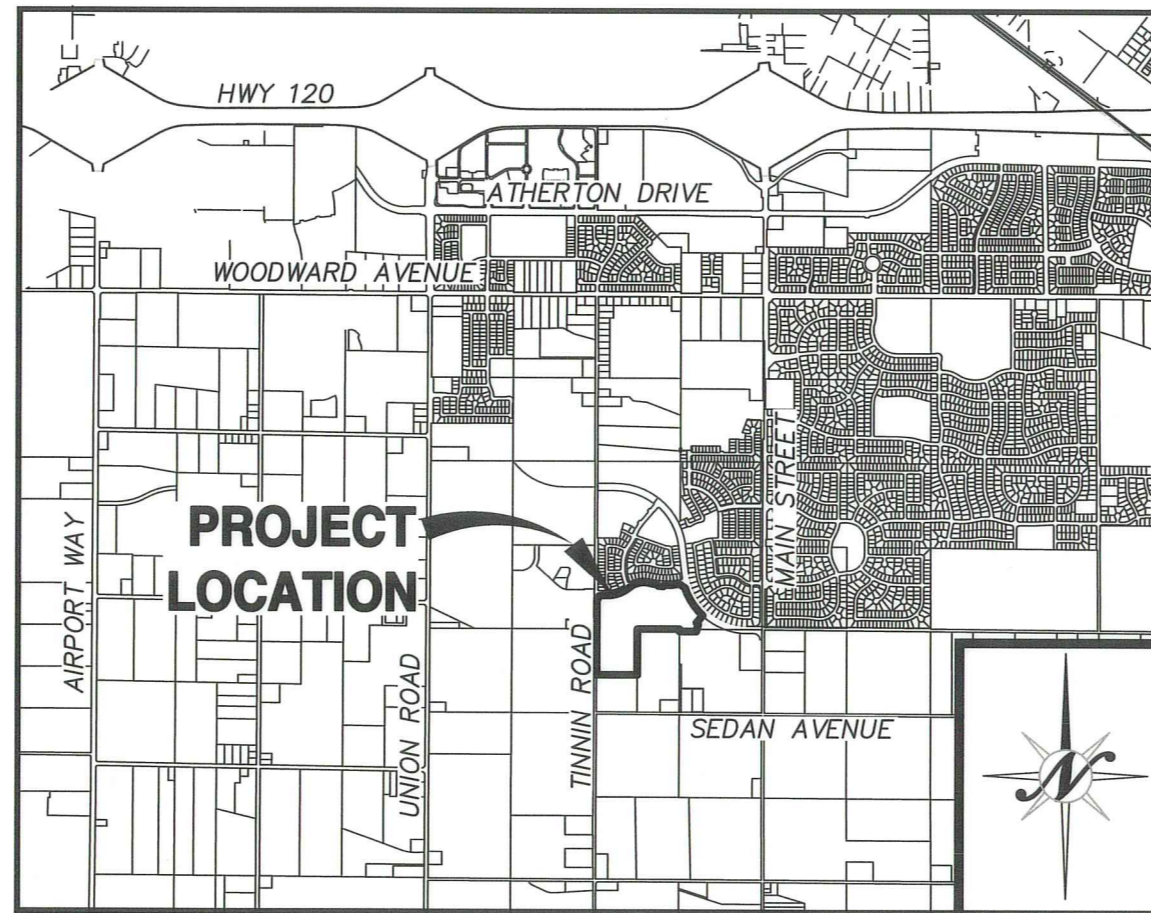
CHRIS ERIAS
DIRECTOR OF DEVELOPMENT SERVICES

**TRACT NO. 4148
SUBDIVISIONS OF SAN JOAQUIN COUNTY
GRIFFIN PARK
UNIT NO. 8**

BEING LOT "E" OF THE MAP ENTITLED "GRIFFIN PARK UNIT NO. 7" RECORDED IN BOOK 44 OF MAPS & PLATS, PAGE 68, S.J.C.R. AND LYING IN A PORTION OF THE EAST HALF OF SECTION 17, TOWNSHIP 2 SOUTH, RANGE 7 EAST, M.D.M. CITY OF MANTECA, SAN JOAQUIN COUNTY, CALIFORNIA
JUNE, 2022

NORTHSTAR ENGINEERING GROUP, INC.

620 12th Street, Modesto, CA 95354
(209) 524-3525



VICINITY MAP

NTS

IRRIGATION DISTRICT'S STATEMENT:

SOUTH SAN JOAQUIN IRRIGATION DISTRICT:

THE EASEMENTS FOR SOUTH SAN JOAQUIN IRRIGATION DISTRICT AS SHOWN ON THIS MAP ARE CORRECT AND SOUTH SAN JOAQUIN IRRIGATION DISTRICT APPROVES THE FILING OF THIS MAP.

DATED THIS 27th DAY OF AUGUST, 2024.

Forrest Killingsworth
FORREST KILLINGSWORTH, ENGINEERING DEPARTMENT MANAGER
SOUTH SAN JOAQUIN IRRIGATION DISTRICT

RIGHT TO FARM STATEMENT:

PER CITY OF MANTECA CODE OF ORDINANCES, TITLE 8, CHAPTER 8.24, THE CITY OF MANTECA PERMITS OPERATION OF PROPERLY CONDUCTED AGRICULTURAL OPERATIONS WITHIN THE CITY LIMITS, INCLUDING THOSE THAT UTILIZE CHEMICAL FERTILIZERS AND PESTICIDES. YOU ARE HEREBY NOTIFIED THAT THE PROPERTY YOU ARE PURCHASING MAY BE LOCATED CLOSE TO AGRICULTURAL LANDS AND OPERATIONS. YOU MAY BE SUBJECT TO INCONVENIENCE OR DISCOMFORT ARISING FROM THE LAWFUL AND PROPER USE OF AGRICULTURAL CHEMICAL AND PESTICIDES AND FROM OTHER AGRICULTURAL ACTIVITIES, INCLUDING WITHOUT LIMITATION, CULTIVATION, PLOWING, SPRAYING, IRRIGATION, PRUNING, HARVESTING, BURNING OF AGRICULTURAL WASTE PRODUCTS, PROTECTION OF CROPS AND ANIMALS FROM DEPREDATION, AND OTHER ACTIVITIES WHICH OCCASIONALLY GENERATE DUST, SMOKE, NOISE AND ODOR. CONSEQUENTLY, DEPENDING ON THE LOCATION OF YOUR PROPERTY, IT MAY BE NECESSARY THAT YOU BE PREPARED TO ACCEPT SUCH INCONVENIENCES OR DISCOMFORT AS A NORMAL AND NECESSARY ASPECT OF LIVING IN AN AGRICULTURALLY ACTIVE REGION.

SURVEYOR'S STATEMENT:

THIS MAP WAS PREPARED BY ME OR UNDER MY DIRECTION AND IS BASED UPON A FIELD SURVEY IN CONFORMANCE WITH THE REQUIREMENTS OF THE SUBDIVISION MAP ACT AND LOCAL ORDINANCE AT THE REQUEST OF PILLSBURY ROAD PARTNERS, LLC ON AUGUST 5, 2021. I HEREBY STATE THAT ALL THE MONUMENTS ARE OF THE CHARACTER AND OCCUPY THE POSITIONS INDICATED OR THAT THEY WILL BE SET IN THOSE POSITIONS BEFORE NOVEMBER, 2023, AND THAT THE MONUMENTS ARE, OR WILL BE, SUFFICIENT TO ENABLE THE SURVEY TO BE RETRACED, AND THAT THIS FINAL MAP SUBSTANTIALLY CONFORMS TO THE CONDITIONALLY APPROVED TENTATIVE MAP.

DATED THIS 30th DAY OF April, 2024

Nicole Cannella
NICOLE CANNELLA, P.L.S. 9099



COUNTY SURVEYOR'S STATEMENT:

I, JAMES E. HART, HEREBY STATE THAT I HAVE EXAMINED THIS FINAL MAP OF "TRACT NO. 4148, SUBDIVISIONS OF SAN JOAQUIN COUNTY, GRIFFIN PARK UNIT NO. 8", CITY OF MANTECA, CALIFORNIA AND THAT THE SUBDIVISION SHOWN HEREON COMPLIES WITH ALL THE PROVISIONS OF CHAPTER 2 OF THE CALIFORNIA SUBDIVISION MAP ACT, AS AMENDED, AND THAT THIS FINAL MAP IS TECHNICALLY CORRECT.

DATED THIS _____ DAY OF _____, 202__.

JAMES E. HART, L.S. 8657
COUNTY SURVEYOR

CITY ENGINEER'S STATEMENT:

I, KEVIN L. JORGENSEN II, HEREBY STATE THAT I AM THE CITY ENGINEER OF THE CITY OF MANTECA, CALIFORNIA AND THAT I HAVE EXAMINED THIS FINAL MAP OF "TRACT NO. 4148, SUBDIVISIONS OF SAN JOAQUIN COUNTY, GRIFFIN PARK UNIT NO. 8", CITY OF MANTECA, CALIFORNIA AND THAT THE SUBDIVISION SHOWN HEREON IS SUBSTANTIALLY THE SAME AS IT APPEARED ON THE TENTATIVE MAP, AND ANY APPROVED ALTERATIONS THEREOF. I FURTHER STATE THAT THIS FINAL MAP COMPLIES WITH ALL THE PROVISIONS OF TITLE 16 OF THE MANTECA MUNICIPAL CODE, AND ANY AMENDMENTS THERETO, APPLICABLE AT THE TIME OF APPROVAL OF THE TENTATIVE MAP.

DATED THIS _____ DAY OF _____, 202__.

KEVIN L. JORGENSEN II, R.C.E. 77243
DIRECTOR OF ENGINEERING / CITY ENGINEER

CITY COUNCIL'S STATEMENT:

THIS IS TO STATE THAT AT ITS REGULARLY HELD MEETING ON THE _____ DAY OF _____, 202__, THE CITY COUNCIL OF THE CITY OF MANTECA, CALIFORNIA, APPROVED THIS FINAL MAP OF "TRACT NO. 4148, SUBDIVISIONS OF SAN JOAQUIN COUNTY, GRIFFIN PARK UNIT NO. 8", CITY OF MANTECA, CALIFORNIA AND ACCEPTED ON BEHALF OF THE PUBLIC FOR PUBLIC USE THE OFFER OF DEDICATION OF ALL PUBLIC UTILITY EASEMENTS AND ACCEPTED ON BEHALF OF THE CITY THE RIGHT TO CONTROL ACCESS OVER AND ACROSS THE ONE-FOOT ACCESS RESERVE STRIPS, THE RELINQUISHMENT TO THE CITY OF MANTECA, ALL ACCESS RIGHTS OF LOTS 187 THROUGH 199 AND LOT 253 TO AND FROM TINNIN ROAD, LOTS 176 THROUGH 187 AND LOTS 293 THROUGH 297 TO AND FROM HOT SPRINGS DRIVE, LOTS 283 THROUGH 293 TO AND FROM WEST ANTONE RAYMUS PARKWAY AND LOTS 176 AND 297 TO AND FROM TULUM WAY, ALL AS SHOWN ON THIS FINAL MAP AND ACCEPTED THE OFFER OF DEDICATION OF THE STREET RIGHTS-OF-WAY AND THE 15.00-FOOT WIDENING OF RIGHT-OF-WAY ALONG TINNIN ROAD, SUBJECT TO SATISFACTORY COMPLETION OF IMPROVEMENTS THEREON OF SAID STREET RIGHTS-OF-WAY IN ACCORDANCE WITH TITLE 16 OF THE MANTECA MUNICIPAL CODE, AND ANY AMENDMENTS THERETO, APPLICABLE AT THE TIME OF APPROVAL OF THE TENTATIVE MAP.

DATED THIS _____ DAY OF _____, 202__.

ATTEST: _____
GARY SINGH, MAYOR CASSANDRA TILTON, CITY CLERK

RECORDER'S STATEMENT:

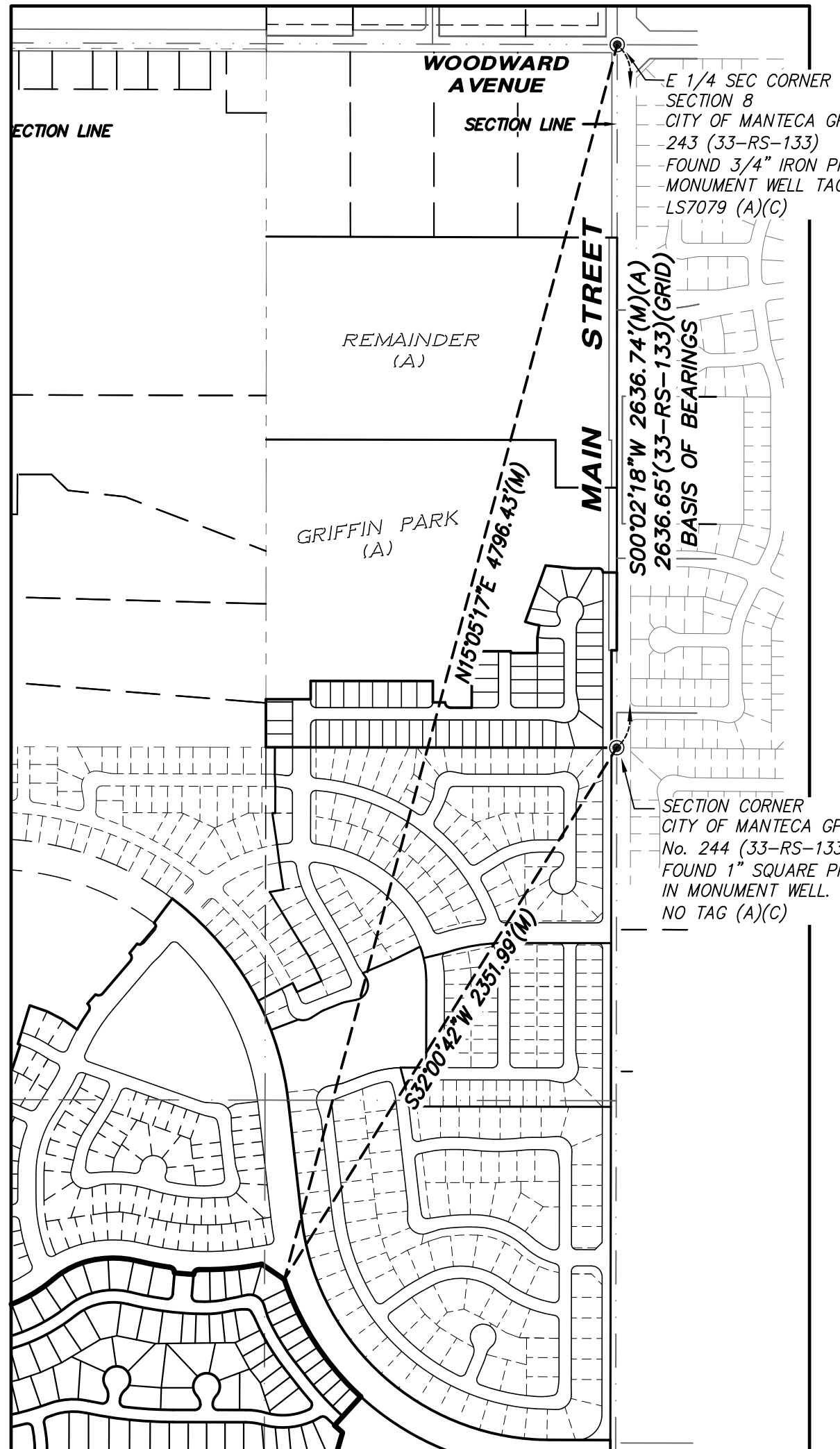
FILED THIS _____ DAY OF _____, 20 __, AT _____
M. IN BOOK _____ OF MAPS AND PLATS, AT PAGE _____,
AT THE REQUEST OF PLACER TITLE INSURANCE COMPANY.

FEE: \$ _____

BY: _____
STEVE J. BESTOLARIDES ASSISTANT/DEPUTY RECORDER
ASSESSOR-RECORDER-COUNTY CLERK

BASIS OF BEARINGS:

BEARINGS ARE BASED ON THE CALIFORNIA COORDINATE SYSTEM NAD 83, ZONE 3 (1991.35). A LINE BETWEEN CITY OF MANTECA MONUMENTS No. 244 AND No. 243 BEARS SOUTH 00°02'18" WEST AS CALCULATED FROM CITY OF MANTECA CONTROL MONUMENT SURVEY FILED IN BOOK 33 OF SURVEYS, AT PAGE 133, SAN JOAQUIN COUNTY RECORDS. TO OBTAIN GRID DISTANCE MULTIPLY GROUND DISTANCE BY 0.99992925.



MONUMENT LEGEND:

- SET 3/4" x 30" IRON PIPE, TAGGED LS 9099, U.O.N.
- ⊙ SET 3/4" x 30" IRON PIPE, TAGGED LS 9099 IN MONUMENT WELL, U.O.N.
- SET 3.00' WITNESS CORNER 3/4" x 30" IRON PIPE, TAGGED LS 9099, U.O.N.
- ⊗ SET 3.00' x 3.00' WITNESS CORNER 3/4" x 30" IRON PIPE, TAGGED LS 9099, U.O.N.
- ⊘ FOUND 3.00' WITNESS CORNER 3/4" IRON PIPE, TAGGED LS 9099 (C) U.O.N.
- FOUND 3/4" IRON PIPE, TAGGED LS 9099 (A)(C), U.O.N.
- ⊙ FOUND 3/4" IRON PIPE, TAGGED LS 9099 IN MONUMENT WELL (A)(C), U.O.N.

TRACT NO. 4148
 SUBDIVISIONS OF SAN JOAQUIN COUNTY
GRIFFIN PARK
UNIT NO. 8

BEING LOT "E" OF THE MAP ENTITLED "GRIFFIN PARK UNIT NO. 7" RECORDED IN BOOK 44 OF MAPS & PLATS, PAGE 68, S.J.C.R. AND LYING IN A PORTION OF THE EAST HALF OF SECTION 17, TOWNSHIP 2 SOUTH, RANGE 7 EAST, M.D.M. CITY OF MANTECA, SAN JOAQUIN COUNTY, CALIFORNIA
 JUNE, 2022

NORTHSTAR ENGINEERING GROUP, INC.

620 12th Street, Modesto, CA 95354
 (209) 524-3525

REFERENCES:

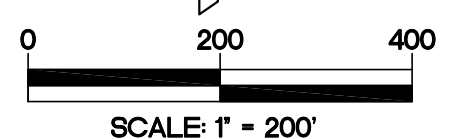
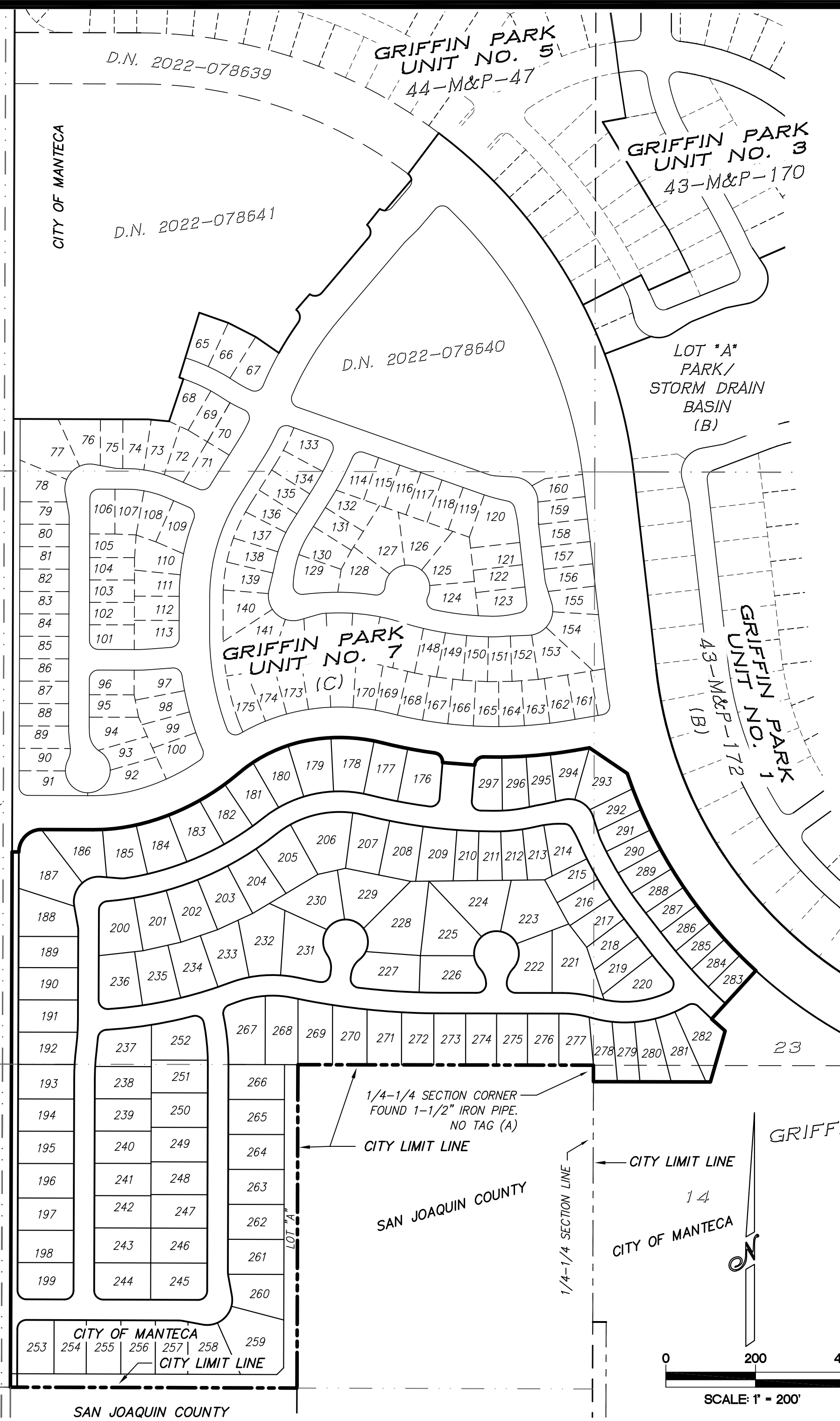
- (A) GRIFFIN PARK, 43 - M&P - 143, S.J.C.R.
- (B) GRIFFIN PARK UNIT NO. 1, 43 - M&P - 172, S.J.C.R.
- (C) GRIFFIN PARK UNIT NO. 7, 44 - M&P - 68, S.J.C.R.

LEGEND:

- SFN SEARCHED, FOUND NOTHING
- W.C. WITNESS CORNER
- U.O.N. UNLESS OTHERWISE NOTED
- (A) SEE REFERENCES THIS SHEET
- (M) MEASURED
- (R) RADIAL BEARING
- C18 CURVE DATA, SEE CURVE TABLE THIS SHEET
- R/W RIGHT OF WAY
- M&P MAPS & PLATS
- PM PARCEL MAPS
- S RECORD OF SURVEY
- I.N. INSTRUMENT NUMBER
- OR OFFICIAL RECORDS
- D.N. DOCUMENT NUMBER
- PUE PUBLIC UTILITY EASEMENT
- SJCO SAN JOAQUIN COUNTY
- S.J.C.R. SAN JOAQUIN COUNTY RECORDS
- SSJID SOUTH SAN JOAQUIN IRRIGATION DISTRICT
- CL CENTERLINE
- EX. EXISTING
- SF SQUARE FEET
- TYP TYPICAL
- ////// RESTRICTED ACCESS

NOTES:

1. ALL DISTANCES ARE MEASURED UNLESS OTHERWISE NOTED.
2. THIS MAP REFERS TO APPROVED TENTATIVE MAP SDJ-18-53.
3. ALL REFERENCES ARE TO SAN JOAQUIN COUNTY RECORDS AND BOOK OR VOLUME PRECEDES PAGE.
4. ALL DISTANCES SHOWN ALONG A LOT LINE THAT CONTAINS A WITNESS CORNER ARE FROM LOT CORNER TO LOT CORNER.
5. ALL LOT CORNERS (EXCEPT FRONT CORNERS): SET 3/4" x 30" IRON PIPE TAGGED LS 9099.
6. WITNESS CORNERS: FRONT LOT CORNERS, SAW CUT '+' IN CONCRETE AT 4.00-FOOT DISTANCE FROM LOT CORNER ON LOT LINE PROJECTION.

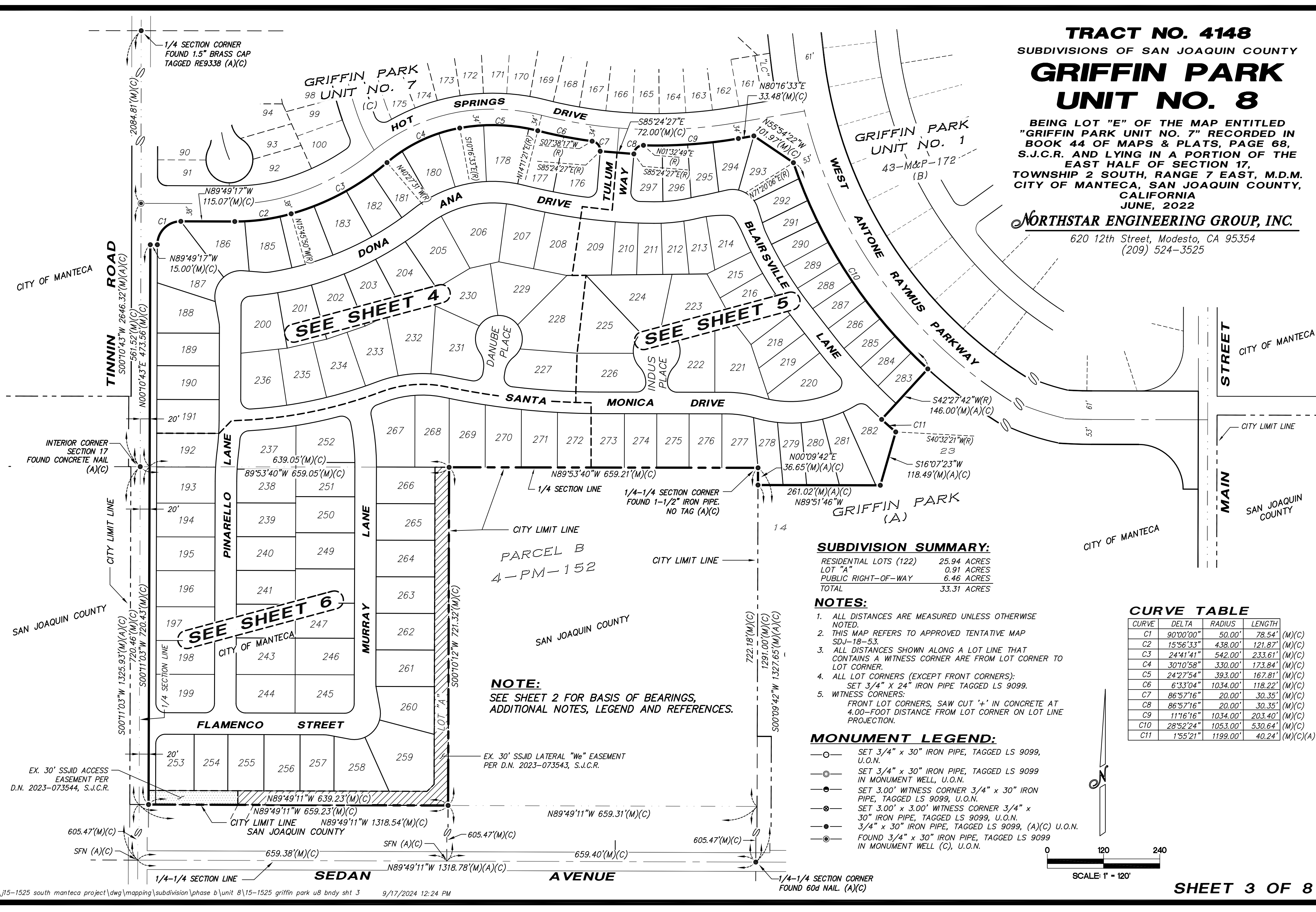


TRACT NO. 4148
 SUBDIVISIONS OF SAN JOAQUIN COUNTY
GRIFFIN PARK
UNIT NO. 8

BEING LOT "E" OF THE MAP ENTITLED
 "GRIFFIN PARK UNIT NO. 7" RECORDED IN
 BOOK 44 OF MAPS & PLATS, PAGE 68,
 S.J.C.R. AND LYING IN A PORTION OF THE
 EAST HALF OF SECTION 17,
 TOWNSHIP 2 SOUTH, RANGE 7 EAST, M.D.M.
 CITY OF MANTECA, SAN JOAQUIN COUNTY,
 CALIFORNIA
 JUNE, 2022

NORTHSTAR ENGINEERING GROUP, INC.

620 12th Street, Modesto, CA 95354
 (209) 524-3525



SUBDIVISION SUMMARY:

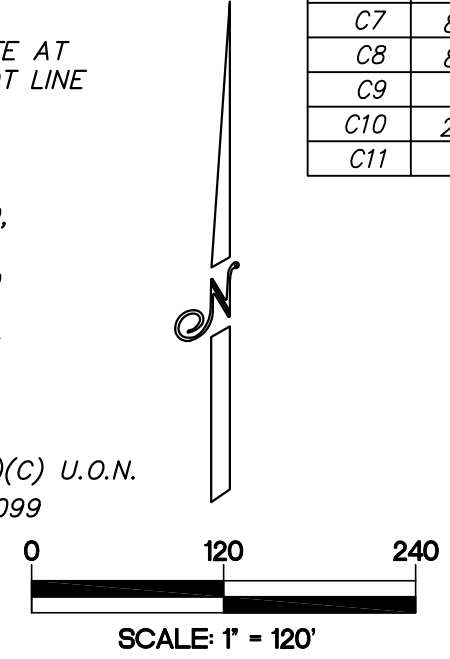
RESIDENTIAL LOTS (122)	25.94 ACRES
LOT "A"	0.91 ACRES
PUBLIC RIGHT-OF-WAY	6.46 ACRES
TOTAL	33.31 ACRES

- NOTES:**
- ALL DISTANCES ARE MEASURED UNLESS OTHERWISE NOTED.
 - THIS MAP REFERS TO APPROVED TENTATIVE MAP SDJ-18-53.
 - ALL DISTANCES SHOWN ALONG A LOT LINE THAT CONTAINS A WITNESS CORNER ARE FROM LOT CORNER TO LOT CORNER.
 - ALL LOT CORNERS (EXCEPT FRONT CORNERS): SET 3/4" x 24" IRON PIPE TAGGED LS 9099.
 - WITNESS CORNERS: FRONT LOT CORNERS, SAW CUT '+' IN CONCRETE AT 4.00-FOOT DISTANCE FROM LOT CORNER ON LOT LINE PROJECTION.

- MONUMENT LEGEND:**
- SET 3/4" x 30" IRON PIPE, TAGGED LS 9099, U.O.N.
 - ⊙ SET 3/4" x 30" IRON PIPE, TAGGED LS 9099 IN MONUMENT WELL, U.O.N.
 - SET 3.00' WITNESS CORNER 3/4" x 30" IRON PIPE, TAGGED LS 9099, U.O.N.
 - ⊗ SET 3.00' x 3.00' WITNESS CORNER 3/4" x 30" IRON PIPE, TAGGED LS 9099, U.O.N.
 - ⊙ SET 3/4" x 30" IRON PIPE, TAGGED LS 9099, (A)(C) U.O.N.
 - ⊙ FOUND 3/4" x 30" IRON PIPE, TAGGED LS 9099 IN MONUMENT WELL (C), U.O.N.

CURVE TABLE

CURVE	DELTA	RADIUS	LENGTH	
C1	90°00'00"	50.00'	78.54'	(M)(C)
C2	15°56'33"	438.00'	121.87'	(M)(C)
C3	24°41'41"	542.00'	233.61'	(M)(C)
C4	30°10'58"	330.00'	173.84'	(M)(C)
C5	24°27'54"	393.00'	167.81'	(M)(C)
C6	6°33'04"	1034.00'	118.22'	(M)(C)
C7	86°57'16"	20.00'	30.35'	(M)(C)
C8	86°57'16"	20.00'	30.35'	(M)(C)
C9	11°16'16"	1034.00'	203.40'	(M)(C)
C10	28°52'24"	1053.00'	530.64'	(M)(C)
C11	1°55'21"	1199.00'	40.24'	(M)(C)(A)



NOTE:
 SEE SHEET 2 FOR BASIS OF BEARINGS,
 ADDITIONAL NOTES, LEGEND AND REFERENCES.

EX. 30' SSJID LATERAL "We" EASEMENT
 PER D.N. 2023-073543, S.J.C.R.

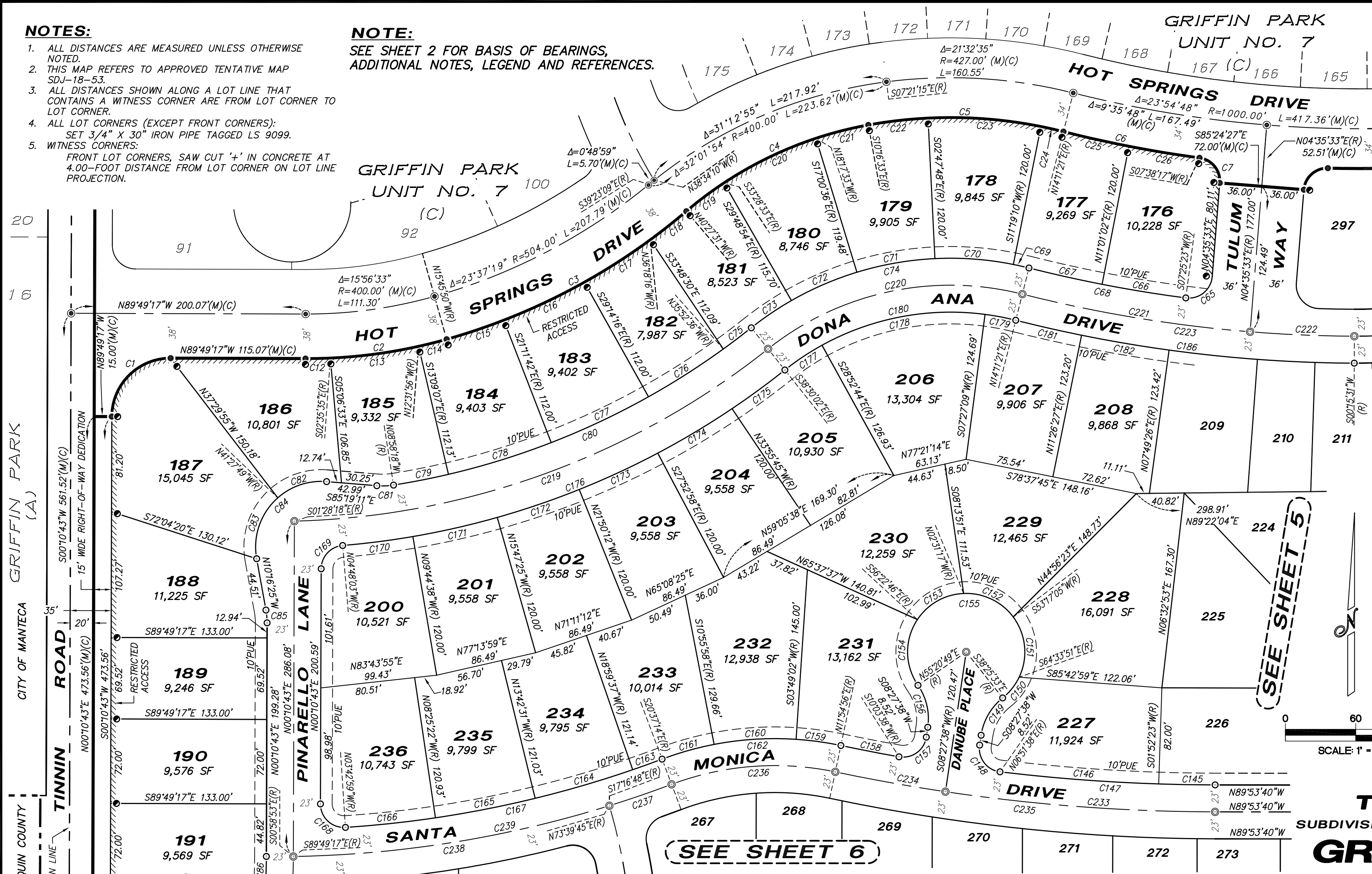
EX. 30' SSJID ACCESS
 EASEMENT PER
 D.N. 2023-073544, S.J.C.R.

NOTES:

- ALL DISTANCES ARE MEASURED UNLESS OTHERWISE NOTED.
- THIS MAP REFERS TO APPROVED TENTATIVE MAP SDJ-18-53.
- ALL DISTANCES SHOWN ALONG A LOT LINE THAT CONTAINS A WITNESS CORNER ARE FROM LOT CORNER TO LOT CORNER.
- ALL LOT CORNERS (EXCEPT FRONT CORNERS): SET 3/4" X 30" IRON PIPE TAGGED LS 9099.
- WITNESS CORNERS: FRONT LOT CORNERS, SAW CUT '4' IN CONCRETE AT 4.00-FOOT DISTANCE FROM LOT CORNER ON LOT LINE PROJECTION.

NOTE:

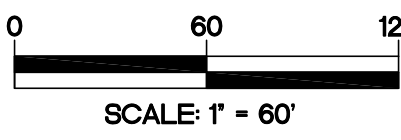
SEE SHEET 2 FOR BASIS OF BEARINGS, ADDITIONAL NOTES, LEGEND AND REFERENCES.



CURVE TABLE

CURVE	DELTA	RADIUS	LENGTH	
C1	90°00'00"	50.00'	78.54'	(M)(C)
C2	15°56'33"	438.00'	121.87'	(M)(C)
C3	24°41'41"	542.00'	233.61'	(M)(C)
C4	30°10'58"	330.00'	173.84'	(M)(C)
C5	24°27'54"	393.00'	167.81'	(M)(C)
C6	6°33'04"	1034.00'	118.22'	(M)(C)
C7	86°57'16"	20.00'	30.35'	(M)(C)
C12	2°46'18"	438.00'	21.19'	
C13	9°56'21"	438.00'	75.98'	
C14	3°13'54"	438.00'	24.70'	
C15	5°25'52"	542.00'	51.38'	
C16	8°02'34"	542.00'	76.08'	
C17	7°04'00"	542.00'	66.85'	
C18	4°09'15"	542.00'	39.30'	
C19	6°58'58"	330.00'	40.22'	
C20	15°11'00"	330.00'	87.45'	
C21	8°01'00"	330.00'	46.17'	
C22	7°28'45"	393.00'	51.30'	
C23	14°06'58"	393.00'	96.82'	
C24	2°52'11"	393.00'	19.69'	
C25	3°10'19"	1034.00'	57.24'	
C26	3°22'45"	1034.00'	60.98'	
C65	92°49'50"	20.00'	32.40'	
C66	3°35'39"	1154.00'	72.39'	
C67	3°10'19"	1154.00'	63.89'	
C68	6°45'58"	1154.00'	136.28'	
C69	2°52'11"	273.00'	13.67'	
C70	14°06'58"	273.00'	67.26'	
C71	14°12'48"	273.00'	67.72'	
C72	12°48'18"	273.00'	61.02'	
C73	8°41'08"	273.00'	41.38'	
C74	52°41'23"	273.00'	251.05'	
C75	2°37'26"	654.00'	29.95'	
C76	6°38'20"	654.00'	75.78'	
C77	8°02'34"	654.00'	91.80'	
C78	8°02'35"	654.00'	91.80'	
C79	4°10'49"	654.00'	47.73'	
C80	29°31'44"	654.00'	337.06'	
C81	13°39'07"	60.00'	14.30'	
C82	46°08'38"	56.00'	45.10'	
C83	58°48'36"	56.00'	57.48'	
C84	104°57'14"	56.00'	102.58'	
C85	10°27'08"	60.00'	10.95'	
C86	3°07'00"	500.00'	27.20'	
C87	3°58'27"	500.00'	34.68'	
C88	7°05'27"	500.00'	61.88'	
C145	1°46'03"	1560.00'	48.13'	
C146	4°59'15"	1560.00'	135.79'	
C147	6°45'18"	1560.00'	183.92'	
C148	91°36'00"	20.00'	31.97'	
C149	43°06'49"	50.00'	37.62'	
C150	26°08'18"	50.00'	22.81'	
C151	62°09'04"	50.00'	54.24'	
C152	55°48'22"	50.00'	48.70'	
C153	53°51'29"	50.00'	47.00'	
C154	68°16'25"	50.00'	59.58'	
C155	266°13'38"	50.00'	232.33'	
C156	43°06'49"	50.00'	37.62'	
C157	91°36'00"	20.00'	31.97'	

SEE SHEET 5



TRACT NO. 4148
SUBDIVISIONS OF SAN JOAQUIN COUNTY
GRIFFIN PARK
UNIT NO. 8

BEING LOT "E" OF THE MAP ENTITLED "GRIFFIN PARK UNIT NO. 7" RECORDED IN BOOK 44 OF MAPS & PLATS, PAGE 68, S.J.C.R. AND LYING IN A PORTION OF THE EAST HALF OF SECTION 17, TOWNSHIP 2 SOUTH, RANGE 7 EAST, M.D.M. CITY OF MANTECA, SAN JOAQUIN COUNTY, CALIFORNIA
JUNE, 2022

NORTHSTAR ENGINEERING GROUP, INC.

620 12th Street, Modesto, CA 95354
(209) 524-3525

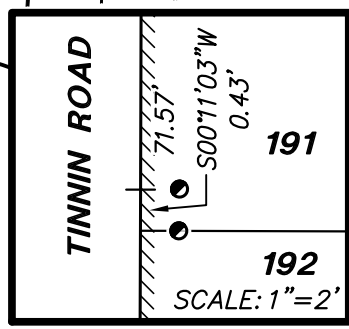
CURVE TABLE

CURVE	DELTA	RADIUS	LENGTH	CURVE	DELTA	RADIUS	LENGTH	CURVE	DELTA	RADIUS	LENGTH
C158	1°51'18"	1560.00'	50.50'	C170	4°56'35"	700.00'	60.39'	C220	52°41'23"	250.00'	229.90'
C159	8°05'54"	273.00'	38.59'	C171	6°02'47"	700.00'	73.87'	C221	9°35'48"	1177.00'	197.14'
C160	14°45'00"	273.00'	70.28'	C172	6°02'47"	700.00'	73.87'	C222	4°20'02"	1177.00'	89.03'
C161	9°41'16"	273.00'	46.16'	C173	6°02'46"	700.00'	73.87'	C223	13°55'50"	1177.00'	286.17'
C162	32°32'10"	273.00'	155.03'	C174	6°02'47"	700.00'	73.87'	C233	8°21'18"	1583.00'	230.84'
C163	1°37'37"	940.00'	26.69'	C175	4°34'17"	700.00'	55.85'	C234	3°27'18"	1583.00'	95.45'
C164	5°17'06"	940.00'	86.71'	C176	3°34'12"	700.00'	41.72'	C235	11°48'36"	1583.00'	326.29'
C165	5°17'09"	940.00'	86.72'	C177	9°37'18"	227.00'	38.12'	C236	32°32'10"	250.00'	141.96'
C166	4°42'23"	940.00'	77.21'	C178	36°19'53"	227.00'	143.94'	C237	3°20'26"	963.00'	56.14'
C167	16°54'15"	940.00'	277.33'	C179	6°44'12"	227.00'	26.69'	C238	16°17'55"	963.00'	273.94'
C168	93°53'42"	20.00'	32.78'	C180	52°41'23"	227.00'	208.75'	C239	19°38'21"	963.00'	330.08'
C169	85°01'14"	20.00'	29.68'	C181	2°44'54"	1200.00'	57.56'	C241	7°05'27"	523.00'	64.73'
				C182	3°37'01"	1200.00'	75.75'				
				C186	13°55'50"	1200.00'	291.76'				
				C219	37°01'44"	677.00'	437.53'				

MONUMENT LEGEND:

- SET 3/4" x 30" IRON PIPE, TAGGED LS 9099, U.O.N.
- ⊙ SET 3/4" x 30" IRON PIPE, TAGGED LS 9099 IN MONUMENT WELL, U.O.N.
- ⊙ SET 3.00" WITNESS CORNER 3/4" x 30" IRON PIPE, TAGGED LS 9099, U.O.N.
- ⊙ SET 3.00" x 3.00" WITNESS CORNER 3/4" x 30" IRON PIPE, TAGGED LS 9099, U.O.N.
- ⊙ FOUND 3/4" x 30" IRON PIPE, TAGGED LS 9099 (A)(C), U.O.N.
- ⊙ FOUND 3/4" x 30" IRON PIPE, TAGGED LS 9099 IN MONUMENT WELL (C), U.O.N.

SEE SHEET 6



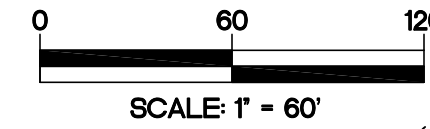
TRACT NO. 4148
 SUBDIVISIONS OF SAN JOAQUIN COUNTY
GRIFFIN PARK
UNIT NO. 8

BEING LOT "E" OF THE MAP ENTITLED
 "GRIFFIN PARK UNIT NO. 7" RECORDED IN
 BOOK 44 OF MAPS & PLATS, PAGE 68,
 S.J.C.R. AND LYING IN A PORTION OF THE
 EAST HALF OF SECTION 17,
 TOWNSHIP 2 SOUTH, RANGE 7 EAST, M.D.M.
 CITY OF MANTECA, SAN JOAQUIN COUNTY,
 CALIFORNIA
 JUNE, 2022

NORTHSTAR ENGINEERING GROUP, INC.

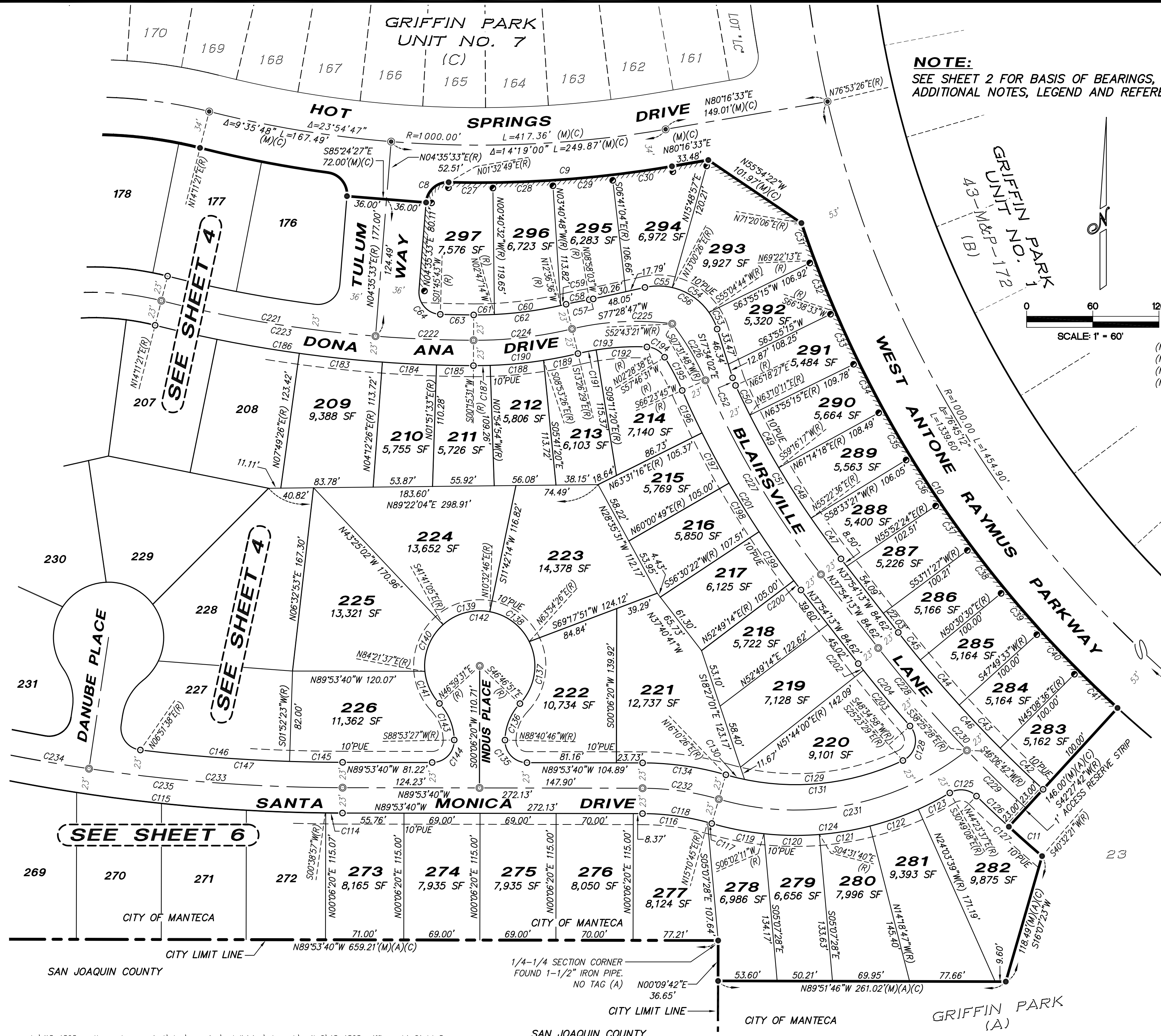
620 12th Street, Modesto, CA 95354
 (209) 524-3525

NOTE:
 SEE SHEET 2 FOR BASIS OF BEARINGS,
 ADDITIONAL NOTES, LEGEND AND REFERENCES.



CURVE TABLE

CURVE	DELTA	RADIUS	LENGTH	CURVE	DELTA	RADIUS	LENGTH
(M)(C) C8	86°57'16"	20.00'	30.35'	(M)(C) C129	37°10'14"	227.00'	147.22'
(M)(C) C9	11°16'16"	1034.00'	203.40'	(M)(C) C130	4°23'41"	227.00'	17.41'
(M)(C) C10	28°52'24"	1053.00'	530.64'	(M)(C) C131	41°33'55"	227.00'	164.68'
(M)(C) C11	1°55'21"	1199.00'	40.24'	(M)(C) C134	16°04'06"	273.00'	76.56'
(M)(C) C27	2°13'21"	1034.00'	40.11'	(M)(C) C135	91°12'54"	20.00'	31.84'
(M)(C) C28	3°00'16"	1034.00'	54.22'	(M)(C) C136	41°53'55"	50.00'	36.56'
(M)(C) C29	3°00'16"	1034.00'	54.22'	(M)(C) C137	69°18'43"	50.00'	60.49'
(M)(C) C30	3°02'23"	1034.00'	54.85'	(M)(C) C138	53°21'40"	50.00'	46.57'
(M)(C) C31	1°57'53"	1053.00'	36.11'	(M)(C) C139	52°13'51"	50.00'	45.58'
(M)(C) C32	2°43'40"	1053.00'	50.13'	(M)(C) C140	53°57'18"	50.00'	47.08'
(M)(C) C33	2°43'18"	1053.00'	50.02'	(M)(C) C141	37°22'06"	50.00'	32.61'
(M)(C) C34	2°40'57"	1053.00'	49.30'	(M)(C) C142	266°13'38"	50.00'	232.33'
(M)(C) C35	2°40'57"	1053.00'	49.30'	(M)(C) C143	41°53'56"	50.00'	36.56'
(M)(C) C36	2°40'57"	1053.00'	49.30'	(M)(C) C144	91°12'53"	20.00'	31.84'
(M)(C) C37	2°40'57"	1053.00'	49.30'	(M)(C) C145	1°46'03"	1560.00'	48.13'
(M)(C) C38	2°40'57"	1053.00'	49.30'	(M)(C) C146	4°59'15"	1560.00'	135.79'
(M)(C) C39	2°40'57"	1053.00'	49.30'	(M)(C) C147	6°45'18"	1560.00'	183.92'
(M)(C) C40	2°40'57"	1053.00'	49.30'	(M)(C) C183	3°37'00"	1200.00'	75.75'
(M)(C) C41	2°40'54"	1053.00'	49.28'	(M)(C) C184	2°20'53"	1200.00'	49.18'
(M)(C) C42	2°40'54"	1153.00'	53.96'	(M)(C) C185	1°36'02"	1200.00'	33.52'
(M)(C) C43	2°40'57"	1153.00'	53.98'	(M)(C) C186	13°55'50"	1200.00'	291.76'
(M)(C) C44	2°40'57"	1153.00'	53.98'	(M)(C) C187	2°10'25"	400.00'	15.17'
(M)(C) C45	1°35'17"	1153.00'	31.96'	(M)(C) C188	6°58'32"	400.00'	48.70'
(M)(C) C46	9°38'05"	1153.00'	193.88'	(M)(C) C189	4°33'03"	400.00'	31.77'
(M)(C) C47	3°16'49"	800.00'	45.80'	(M)(C) C190	13°42'00"	400.00'	95.64'
(M)(C) C48	3°53'41"	800.00'	54.38'	(M)(C) C191	4°15'09"	227.00'	16.85'
(M)(C) C49	3°53'54"	800.00'	54.43'	(M)(C) C192	11°39'58"	227.00'	46.22'
(M)(C) C50	2°08'16"	800.00'	29.85'	(M)(C) C193	15°55'07"	227.00'	63.07'
(M)(C) C51	13°12'40"	800.00'	184.46'	(M)(C) C194	55°17'53"	20.00'	19.30'
(M)(C) C52	7°07'31"	60.00'	7.46'	(M)(C) C195	8°37'14"	227.00'	34.15'
(M)(C) C53	17°21'14"	56.00'	16.96'	(M)(C) C196	2°52'29"	846.00'	42.45'
(M)(C) C54	42°04'18"	56.00'	41.12'	(M)(C) C197	3°30'27"	846.00'	51.79'
(M)(C) C55	25°31'39"	56.00'	24.95'	(M)(C) C198	3°30'27"	846.00'	51.79'
(M)(C) C56	84°57'11"	56.00'	83.03'	(M)(C) C199	3°41'08"	846.00'	54.42'
(M)(C) C57	3°33'10"	60.00'	3.72'	(M)(C) C200	0°43'27"	846.00'	10.69'
(M)(C) C58	4°28'26"	273.00'	21.32'	(M)(C) C201	14°17'58"	846.00'	211.14'
(M)(C) C59	0°49'53"	354.00'	5.14'	(M)(C) C202	0°21'47"	1199.00'	7.60'
(M)(C) C60	9°49'22"	354.00'	60.69'	(M)(C) C203	3°09'02"	1199.00'	65.93'
(M)(C) C61	3°02'45"	354.00'	18.82'	(M)(C) C204	3°30'51"	1199.00'	73.53'
(M)(C) C62	13°42'00"	354.00'	84.64'	(M)(C) C221	9°35'48"	1177.00'	197.14'
(M)(C) C63	1°30'12"	1154.00'	30.28'	(M)(C) C222	4°20'02"	1177.00'	89.03'
(M)(C) C64	92°49'50"	20.00'	32.40'	(M)(C) C223	13°55'50"	1177.00'	286.17'
(M)(C) C114	0°32'37"	1606.00'	15.24'	(M)(C) C224	13°42'00"	377.00'	90.14'
(M)(C) C115	11°48'36"	1606.00'	331.03'	(M)(C) C225	20°58'17"	250.00'	91.50'
(M)(C) C116	15°04'25"	227.00'	59.72'	(M)(C) C226	13°40'24"	250.00'	59.66'
(M)(C) C117	0°59'41"	227.00'	3.94'	(M)(C) C227	14°17'58"	823.00'	205.40'
(M)(C) C118	16°04'06"	227.00'	63.66'	(M)(C) C228	5°59'05"	1176.00'	122.84'
(M)(C) C119	10°08'15"	273.00'	48.30'	(M)(C) C229	3°39'00"	1176.00'	74.91'
(M)(C) C120	10°33'51"	273.00'	50.34'	(M)(C) C230	9°38'05"	1176.00'	197.75'
(M)(C) C121	9°47'07"	273.00'	46.62'	(M)(C) C231	54°35'54"	250.00'	238.23'
(M)(C) C122	9°44'52"	273.00'	46.45'	(M)(C) C232	16°04'06"	250.00'	70.11'
(M)(C) C123	6°45'29"	273.00'	32.20'	(M)(C) C233	8°21'18"	1583.00'	230.84'
(M)(C) C124	46°59'34"	273.00'	223.91'	(M)(C) C234	3°27'18"	1583.00'	95.45'
(M)(C) C125	7°12'45"	20.00'	26.25'	(M)(C) C235	11°48'36"	1583.00'	326.29'
(M)(C) C126	1°55'55"	1199.00'	40.43'				
(M)(C) C127	3°51'16"	1199.00'	80.67'				
(M)(C) C128	106°01'33"	20.00'	37.01'				



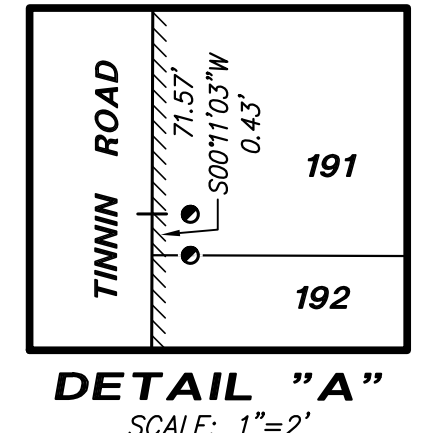
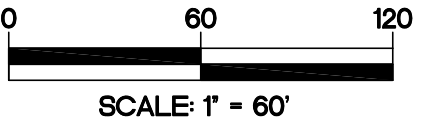
k:\j15-1525 south manteca project\dwg\mapping\subdivision\phase b\unit 8\15-1525 griffin park\152527.pn

SEE SHEET 4

SEE SHEET 5

CURVE TABLE

CURVE	DELTA	RADIUS	LENGTH
C86	3'07"00"	500.00'	27.20'
C87	3'58"27"	500.00'	34.68'
C88	7'05"27"	500.00'	61.88'
C89	3'56"53"	546.00'	37.62'
C90	3'08"28"	546.00'	29.93'
C91	7'05"21"	546.00'	67.55'
C92	90'00"00"	20.00'	31.42'
C93	90'00"14"	20.00'	31.42'
C94	89'59"46"	20.00'	31.41'
C95	10'27"08"	60.00'	10.95'
C96	34'45"53"	56.00'	33.98'
C97	51'09"26"	56.00'	50.00'
C98	24'59"34"	56.00'	24.43'
C99	110'54"53"	56.00'	108.41'
C100	3'14"36"	60.00'	3.40'
C101	7'12"32"	60.00'	7.55'
C102	10'27"08"	60.00'	10.95'
C103	12'07"27"	523.00'	110.67'
C104	82'21"15"	20.00'	28.75'
C105	1'01"14"	986.00'	17.56'
C106	16'37"19"	227.00'	65.85'
C107	15'54"51"	227.00'	63.05'
C108	32'32"10"	227.00'	128.90'
C109	0'22"51"	1606.00'	10.68'
C110	2'47"24"	1606.00'	78.20'
C111	2'46"10"	1606.00'	77.63'
C112	2'45"21"	1606.00'	77.24'
C113	2'34"13"	1606.00'	72.04'
C114	0'32"37"	1606.00'	15.24'
C115	11'48"36"	1606.00'	331.03'
C205	90'00"37"	20.00'	31.42'
C206	90'00"00"	20.00'	31.42'
C207	2'57"33"	500.00'	25.82'
C208	4'07"48"	500.00'	36.04'
C209	7'05"21"	500.00'	61.86'
C210	2'54"05"	546.00'	27.65'
C211	82'20"08"	20.00'	28.74'
C212	5'53"35"	986.00'	101.40'
C213	5'29"13"	986.00'	94.43'
C214	11'22"48"	986.00'	195.83'
C215	93'42"05"	20.00'	32.71'
C216	10'01"03"	477.00'	83.40'
C217	1'07"40"	477.00'	9.39'
C218	11'08"43"	477.00'	92.79'
C233	8'21"18"	1583.00'	230.84'
C234	3'27"18"	1583.00'	95.45'
C235	11'48"36"	1583.00'	326.29'
C236	32'32"10"	250.00'	141.96'
C237	3'20"26"	963.00'	56.14'
C238	16'17"55"	963.00'	273.94'
C239	19'38"21"	963.00'	330.08'
C240	7'05"21"	523.00'	64.71'
C241	7'05"27"	523.00'	64.73'
C242	16'30"27"	500.00'	144.05'



NOTE:
SEE SHEET 2 FOR BASIS OF BEARINGS, ADDITIONAL NOTES, LEGEND AND REFERENCES.

- NOTES:**
- ALL DISTANCES ARE MEASURED UNLESS OTHERWISE NOTED.
 - THIS MAP REFERS TO APPROVED TENTATIVE MAP SDJ-18-53.
 - ALL DISTANCES SHOWN ALONG A LOT LINE THAT CONTAINS A WITNESS CORNER ARE FROM LOT CORNER TO LOT CORNER.
 - ALL LOT CORNERS (EXCEPT FRONT CORNERS): SET 3/4" X 24" IRON PIPE TAGGED LS 9099.
 - WITNESS CORNERS:
FRONT LOT CORNERS, SAW CUT '+' IN CONCRETE AT 4.00-FOOT DISTANCE FROM LOT CORNER ON LOT LINE PROJECTION.

- MONUMENT LEGEND:**
- SET 3/4" X 30" IRON PIPE, TAGGED LS 9099, U.O.N.
 - ⊙ SET 3/4" X 30" IRON PIPE, TAGGED LS 9099 IN MONUMENT WELL, U.O.N.
 - SET 3.00' WITNESS CORNER 3/4" X 30" IRON PIPE, TAGGED LS 9099, U.O.N.
 - ⊗ SET 3.00' X 3.00' WITNESS CORNER 3/4" X 30" IRON PIPE, TAGGED LS 9099, U.O.N.
 - ⊙ FOUND 3/4" X 30" IRON PIPE, TAGGED LS 9099 (A)(C), U.O.N.
 - ⊙ FOUND 3/4" X 30" IRON PIPE, TAGGED LS 9099 IN MONUMENT WELL (C), U.O.N.

OMITTED SIGNATURES:
PURSUANT TO SECTION 66436(a)(3)(A)(i) OF THE CALIFORNIA SUBDIVISION MAP ACT, THE SIGNATURES OF THE FOLLOWING PARTIES HAVE BEEN OMITTED:
PACIFIC GAS AND ELECTRIC FOR AN EASEMENT FOR DISTRIBUTION OF ELECTRIC ENERGY AND COMMUNICATION PURPOSES AND INCIDENTAL PURPOSES, RECORDED MARCH 8, 2016 AS DOCUMENT NO. 2016-026714, S.J.C.R.

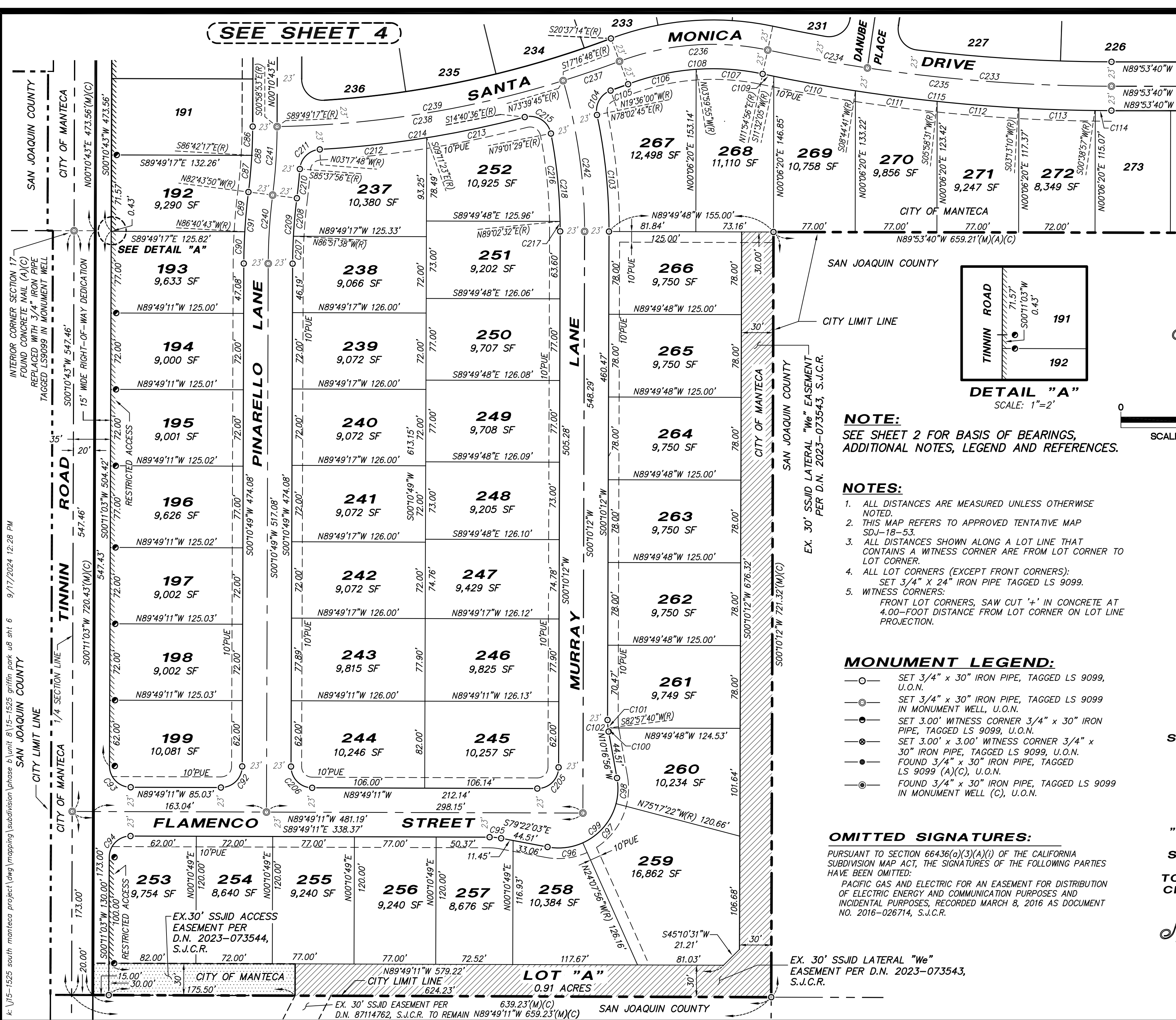
EX. 30' SSSJD LATERAL "We" EASEMENT PER D.N. 2023-073543, S.J.C.R.

TRACT NO. 4148
SUBDIVISIONS OF SAN JOAQUIN COUNTY
GRIFFIN PARK
UNIT NO. 8

BEING LOT "E" OF THE MAP ENTITLED "GRIFFIN PARK UNIT NO. 7" RECORDED IN BOOK 44 OF MAPS & PLATS, PAGE 68, S.J.C.R. AND LYING IN A PORTION OF THE EAST HALF OF SECTION 17, TOWNSHIP 2 SOUTH, RANGE 7 EAST, M.D.M. CITY OF MANTECA, SAN JOAQUIN COUNTY, CALIFORNIA
JUNE, 2022

NORTHSTAR ENGINEERING GROUP, INC.

620 12th Street, Modesto, CA 95354
(209) 524-3525



INTERIOR CORNER SECTION 17 FOUND CONCRETE NAIL (A)(C) REPLACED WITH 3/4" IRON PIPE TAGGED LS9099 IN MONUMENT WELL

15' WIDE RIGHT-OF-WAY DEDICATION

RESTRICTED ACCESS

RESTRICTED ACCESS

RESTRICTED ACCESS

EX. 30' SSSJD ACCESS EASEMENT PER D.N. 2023-073544, S.J.C.R.

EX. 30' SSSJD LATERAL "We" EASEMENT PER D.N. 2023-073543, S.J.C.R.

k:\15-1525 south_manteca project\dwg\mapping\subdivision\phase b\unit 8\15-1525 griffin park u8 sht 6 9/17/2024 12:28 PM SAN JOAQUIN COUNTY

TRACT NO. 4148
SUBDIVISIONS OF SAN JOAQUIN COUNTY
GRIFFIN PARK
UNIT NO. 8

BEING LOT "E" OF THE MAP ENTITLED
"GRIFFIN PARK UNIT NO. 7" RECORDED IN
BOOK 44 OF MAPS & PLATS, PAGE 68,
S.J.C.R. AND LYING IN A PORTION OF THE
EAST HALF OF SECTION 17,
TOWNSHIP 2 SOUTH, RANGE 7 EAST, M.D.M.
CITY OF MANTECA, SAN JOAQUIN COUNTY,
CALIFORNIA
JUNE, 2022

NORTHSTAR ENGINEERING GROUP, INC.

620 12th Street, Modesto, CA 95354
(209) 524-3525

NOTARY'S ACKNOWLEDGMENT:

A NOTARY PUBLIC OR OTHER OFFICER COMPLETING THIS
CERTIFICATE VERIFIES ONLY THE IDENTITY OF THE INDIVIDUAL WHO
SIGNED THE DOCUMENT TO WHICH THIS CERTIFICATE IS ATTACHED,
AND NOT THE TRUTHFULNESS, ACCURACY, OR VALIDITY OF THAT
DOCUMENT.

STATE OF CALIFORNIA

COUNTY OF San Joaquin } s.s.
ON May 9, 2024, BEFORE ME, Heather Gilbert, A NOTARY PUBLIC,

PERSONALLY APPEARED Albert G. Boyce, Manager
WHO PROVED TO ME ON THE BASIS OF SATISFACTORY EVIDENCE TO BE THE PERSON(S) WHOSE NAME(S)
IS/ARE SUBSCRIBED TO THE WITHIN INSTRUMENT AND ACKNOWLEDGED TO ME THAT HE/SHE/THEY
EXECUTED THE SAME IN HIS/HER/THEIR AUTHORIZED CAPACITY(IES), AND THAT BY HIS/HER/THEIR
SIGNATURE(S) ON THE INSTRUMENT THE PERSON(S), OR THE ENTITY UPON BEHALF OF WHICH THE
PERSON(S) ACTED, EXECUTED THE INSTRUMENT.

I CERTIFY UNDER PENALTY OF PERJURY UNDER THE LAWS OF THE STATE OF CALIFORNIA THAT THE
FOREGOING PARAGRAPH IS TRUE AND CORRECT.

WITNESS MY HAND: [Signature] PRINTED NAME: Heather Gilbert
PRINCIPAL COUNTY OF BUSINESS: San Joaquin MY COMMISSION EXPIRES: August 30, 2027
COMMISSION NUMBER: 2457282

NOTARY'S ACKNOWLEDGMENT:

A NOTARY PUBLIC OR OTHER OFFICER COMPLETING THIS
CERTIFICATE VERIFIES ONLY THE IDENTITY OF THE INDIVIDUAL WHO
SIGNED THE DOCUMENT TO WHICH THIS CERTIFICATE IS ATTACHED,
AND NOT THE TRUTHFULNESS, ACCURACY, OR VALIDITY OF THAT
DOCUMENT.

STATE OF CALIFORNIA

COUNTY OF Placer } s.s.
ON May 28, 2024, BEFORE ME, Lynnell Reese, A NOTARY PUBLIC,

PERSONALLY APPEARED Nathan E. Baker, Director
WHO PROVED TO ME ON THE BASIS OF SATISFACTORY EVIDENCE TO BE THE PERSON(S) WHOSE NAME(S)
IS/ARE SUBSCRIBED TO THE WITHIN INSTRUMENT AND ACKNOWLEDGED TO ME THAT HE/SHE/THEY
EXECUTED THE SAME IN HIS/HER/THEIR AUTHORIZED CAPACITY(IES), AND THAT BY HIS/HER/THEIR
SIGNATURE(S) ON THE INSTRUMENT THE PERSON(S), OR THE ENTITY UPON BEHALF OF WHICH THE
PERSON(S) ACTED, EXECUTED THE INSTRUMENT.

I CERTIFY UNDER PENALTY OF PERJURY UNDER THE LAWS OF THE STATE OF CALIFORNIA THAT THE
FOREGOING PARAGRAPH IS TRUE AND CORRECT.

WITNESS MY HAND: [Signature] PRINTED NAME: Lynnell Reese
PRINCIPAL COUNTY OF BUSINESS: Placer MY COMMISSION EXPIRES: 08/16/2026
COMMISSION NUMBER: 2413091

NOTARY'S ACKNOWLEDGMENT:

A NOTARY PUBLIC OR OTHER OFFICER COMPLETING THIS
CERTIFICATE VERIFIES ONLY THE IDENTITY OF THE INDIVIDUAL WHO
SIGNED THE DOCUMENT TO WHICH THIS CERTIFICATE IS ATTACHED,
AND NOT THE TRUTHFULNESS, ACCURACY, OR VALIDITY OF THAT
DOCUMENT.

STATE OF CALIFORNIA

COUNTY OF Placer } s.s.
ON May 28, 2024, BEFORE ME, Lynnell Reese, A NOTARY PUBLIC,

PERSONALLY APPEARED Nathan E. Baker, Director
WHO PROVED TO ME ON THE BASIS OF SATISFACTORY EVIDENCE TO BE THE PERSON(S) WHOSE NAME(S)
IS/ARE SUBSCRIBED TO THE WITHIN INSTRUMENT AND ACKNOWLEDGED TO ME THAT HE/SHE/THEY
EXECUTED THE SAME IN HIS/HER/THEIR AUTHORIZED CAPACITY(IES), AND THAT BY HIS/HER/THEIR
SIGNATURE(S) ON THE INSTRUMENT THE PERSON(S), OR THE ENTITY UPON BEHALF OF WHICH THE
PERSON(S) ACTED, EXECUTED THE INSTRUMENT.

I CERTIFY UNDER PENALTY OF PERJURY UNDER THE LAWS OF THE STATE OF CALIFORNIA THAT THE
FOREGOING PARAGRAPH IS TRUE AND CORRECT.

WITNESS MY HAND: [Signature] PRINTED NAME: Lynnell Reese
PRINCIPAL COUNTY OF BUSINESS: Placer MY COMMISSION EXPIRES: 08/16/2026
COMMISSION NUMBER: 2413091

TRACT NO. 4148
SUBDIVISIONS OF SAN JOAQUIN COUNTY
GRIFFIN PARK
UNIT NO. 8

BEING LOT "E" OF THE MAP ENTITLED
"GRIFFIN PARK UNIT NO. 7" RECORDED IN
BOOK 44 OF MAPS & PLATS, PAGE 68,
S.J.C.R. AND LYING IN A PORTION OF THE
EAST HALF OF SECTION 17,
TOWNSHIP 2 SOUTH, RANGE 7 EAST, M.D.M.
CITY OF MANTECA, SAN JOAQUIN COUNTY,
CALIFORNIA
JUNE, 2022

NORTHSTAR ENGINEERING GROUP, INC.

620 12th Street, Modesto, CA 95354
(209) 524-3525

BENEFICIARY STATEMENT:

BENEFICIARY: WELLS FARGO BANK, NATIONAL ASSOCIATION, AS BENEFICIARY UNDER
CONSTRUCTION DEED OF TRUST RECORDED JULY 19, 2024, AS INSTRUMENT
NO. 2024-059966 IN THE OFFICIAL RECORDS OF SAN JOAQUIN COUNTY,
HEREBY CONSENT TO THE FILING OF THIS MAP.

BY: Christeen Mazza 10/1/2024
DATE
PRINT: Christeen Mazza

NOTARY'S ACKNOWLEDGMENT:

A NOTARY PUBLIC OR OTHER OFFICER COMPLETING THIS
CERTIFICATE VERIFIES ONLY THE IDENTITY OF THE INDIVIDUAL WHO
SIGNED THE DOCUMENT TO WHICH THIS CERTIFICATE IS ATTACHED,
AND NOT THE TRUTHFULNESS, ACCURACY, OR VALIDITY OF THAT
DOCUMENT.

STATE OF CALIFORNIA
COUNTY OF Placer } s.s.
ON 10-1-2024, BEFORE ME, Lynnell Reese, A NOTARY PUBLIC,
PERSONALLY APPEARED Christeen Mazza
WHO PROVED TO ME ON THE BASIS OF SATISFACTORY EVIDENCE TO BE THE PERSON(S) WHOSE NAME(S)
IS/ARE SUBSCRIBED TO THE WITHIN INSTRUMENT AND ACKNOWLEDGED TO ME THAT HE/SHE/THEY
EXECUTED THE SAME IN HIS/HER/THEIR AUTHORIZED CAPACITY(IES), AND THAT BY HIS/HER/THEIR
SIGNATURE(S) ON THE INSTRUMENT THE PERSON(S), OR THE ENTITY UPON BEHALF OF WHICH THE
PERSON(S) ACTED, EXECUTED THE INSTRUMENT.

I CERTIFY UNDER PENALTY OF PERJURY UNDER THE LAWS OF THE STATE OF CALIFORNIA THAT THE
FOREGOING PARAGRAPH IS TRUE AND CORRECT.

WITNESS MY HAND: [Signature] PRINTED NAME: Lynnell Reese
PRINCIPAL COUNTY OF BUSINESS: Placer MY COMMISSION EXPIRES: 8-16-2026
COMMISSION NUMBER: 2413091

