



CITY OF MANTECA

PARKS AND RECREATION MASTER PLAN UPDATE

February 3, 2026





PURPOSE

What is the purpose of a Parks and Recreation Master Plan?

- To set the framework for decision makers in the planning and renovation of parks, trails, recreation facilities, programs and community services provided.
- To set facility standards.
- To provide a systematic prioritized approach to the implementation of needed parks, facilities, programs and services.





TIMELINE

Kick-off Meeting

- Introductions
- Schedule

1

Community Workshop #1

- September 12th, 6pm
- Introduction to master plan process
- Gather community feedback

3

Community Workshop #3

- October 22nd, 6pm
- Provide feedback from Workshop #2
- Gather information on community priorities

5

2

Focus Groups

- Topical small group meetings
- Consensus summaries

4

Community Workshop #2

- October 3rd, 6pm
- Provide feedback from Workshop #1
- Gather community feedback

6

Council Meeting

- Present consensus master plan for approval



COMMUNITY INPUT

STAKEHOLDER FOCUS GROUPS

FOCUS GROUP #1

SENIORS AND VOLUNTEER
ORGANIZATIONS

Sept. 4 2024 10am to 11:30am

FOCUS GROUP #2

BUSINESS & SPECIAL EVENTS

Sept. 4 2024 1:30pm to 3pm

FOCUS GROUP #3

SPORTS ORGANIZATIONS

Sept. 4 2024 5pm to 6:30pm



COMMUNITY WORKSHOPS

WORKSHOP #1

Sept. 12, 2024 6pm to 8pm

WORKSHOP #2

Oct. 3, 2024 6pm to 8pm

WORKSHOP #3

Oct. 22, 2024 6pm to 8pm



TOP PRIORITIES

Top priorities from all Community Input

Gymnasium / Multi-Use Recreation Center

Swimming / Aquatics Center

Maintain Existing, Improve Safety and Accessibility

Pickleball

More Funding

Tennis

Amphiteaters

Better City Communication

City Programs for Youth and Seniors

Roller Arena

Skate Park

Theatre Arts

Trails and Open Space



ACREAGE COMPARISON

	POPULATION	PARK TYPE	NUM. OF PARKS	PARK ACREAGE	ACRES RATIO PER 1000	ACRES DEMANDED	ACRES SURPLUS OR DEFICIT
2016	72,880	Neighborhood		212.73	3	218.64	-5.90
		Community		78.46	1	72.88	5.60
		Special Use		90.94	1	72.88	18.10
		Total Parks	65	382.13	5	364.4	17.70
2024	91,055	Neighborhood		274.63	3	273.17	1.5
		Community		84.79	1	91.01	-6.3
		Special Use		91.81	1	91.01	0.8
		Total Parks	74	451.23	5	455.28	-4
2040	206,882	Neighborhood		375.12	3	620.65	-245.5
		Community		164.79	1	206.88	-42.1
		Special Use		108.81	1	206.88	-98.1
		Total Parks	95	648.72	5	1034.41	-385.7

*2040 population estimate based on the 2023 Manteca General Plan.
Estimated park acreage by 2040 includes all parks currently in planning.



EXISTING STATEWIDE FACILITIES

FACILITY / PROGRAM	CURRENT MANTECA FACILITIES	JOINT-USE SCHOOL FACILITIES***	TOTAL FACILITIES	LEVEL OF SERVICE STANDARDS*	FACILITY DEMAND 2024	CURRENT SURPLUS/ DEMAND 2024	FACILITY DEMAND 2040	FUTURE SURPLUS/ DEMAND 2040
Baseball	17	15	32	1 per 4,200*	21.7	10.3	49.3	-17.3
Basketball (Outdoor)	22		22	1 per 4,090**	22.3	-0.3	50.6	-28.6
Dog Park	1		1	1 per 91,066**	4.8	-3.8	10.9	-9.9
Football	6	3	7.5	1 per 15,750**	5.8	1.7	13.1	-5.6
Gymnasium	0		0	1 per 71,100**	1.3	-1.3	2.9	-2.9
Pickleball	3		3	1 per 8,850**	10.3	-7.3	23.4	-20.4
Playground	80		80	1 per 3,750*	24.3	55.7	55.2	24.8
Senior Center	1		1	1 per 150,000*	0.6	0.4	1.4	-0.4
Skate Park	1		1	1 per 100,000**	0.9	0.1	2.1	-1.1
Soccer	12	4	14	1 per 3,350*	27.2	-13.2	61.8	-47.8
Softball	9		9	1 per 10,700*	8.5	0.5	19.3	-10.7
Swimming	0.6	2	1.6	1 per 44,712*	2.0	-0.4	4.6	-3.0
Tennis	8		8	1 per 8,850*	10.3	-2.3	23.4	-15.4
Volleyball	1		1	1 per 7,866**	11.6	-10.6	26.3	-25.3
Walking / Jogging Trails	10		10	1 per 3,478**	26.2	-16.2	59.5	-49.5

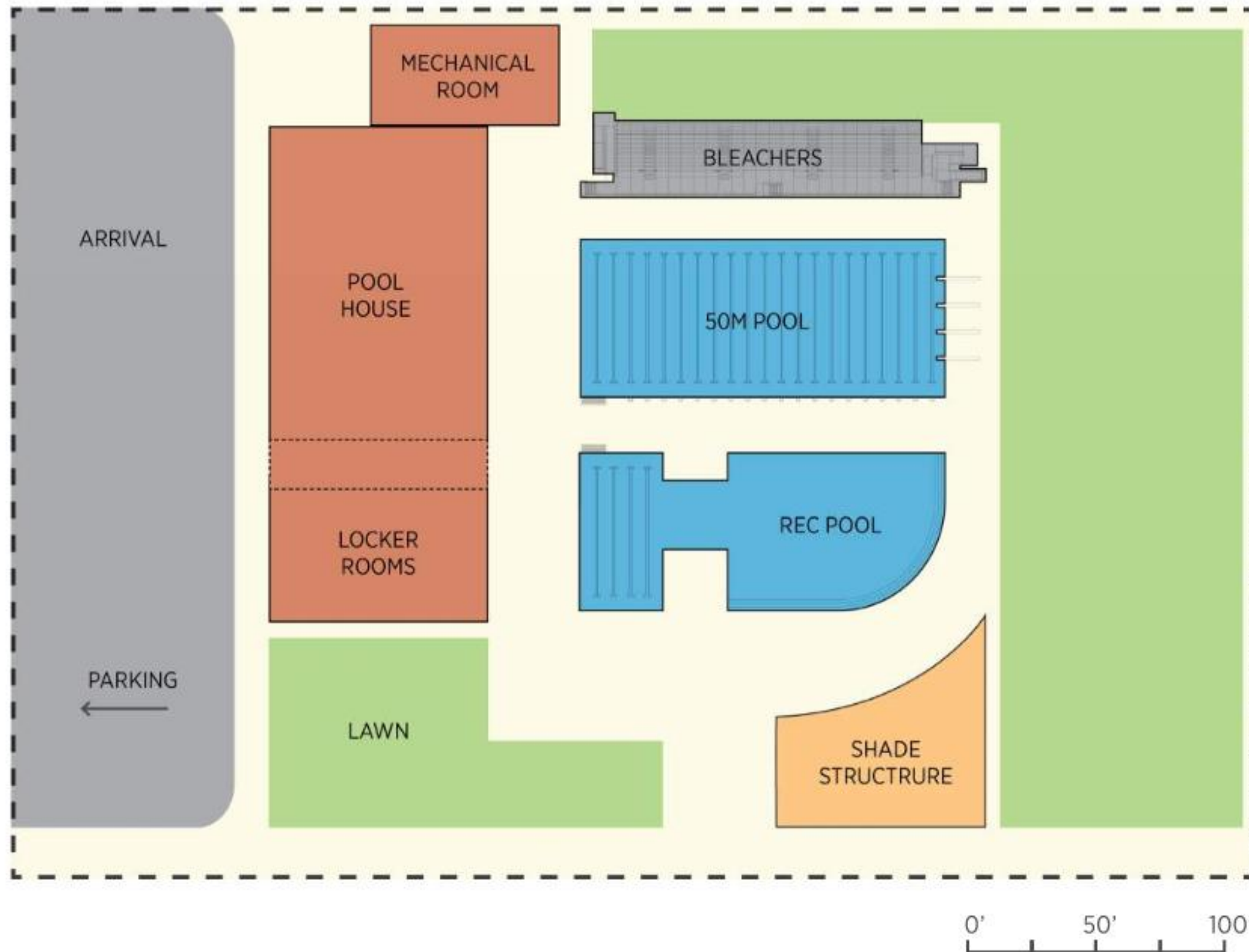
*Standards set by Manteca 2016 Parks and Recreation Master Plan

**Standards set by National Recreation and Parks Association





***School facilities other than ball fields are counted at 50% due to limited availability to



FUTURE AQUATICS FACILITY

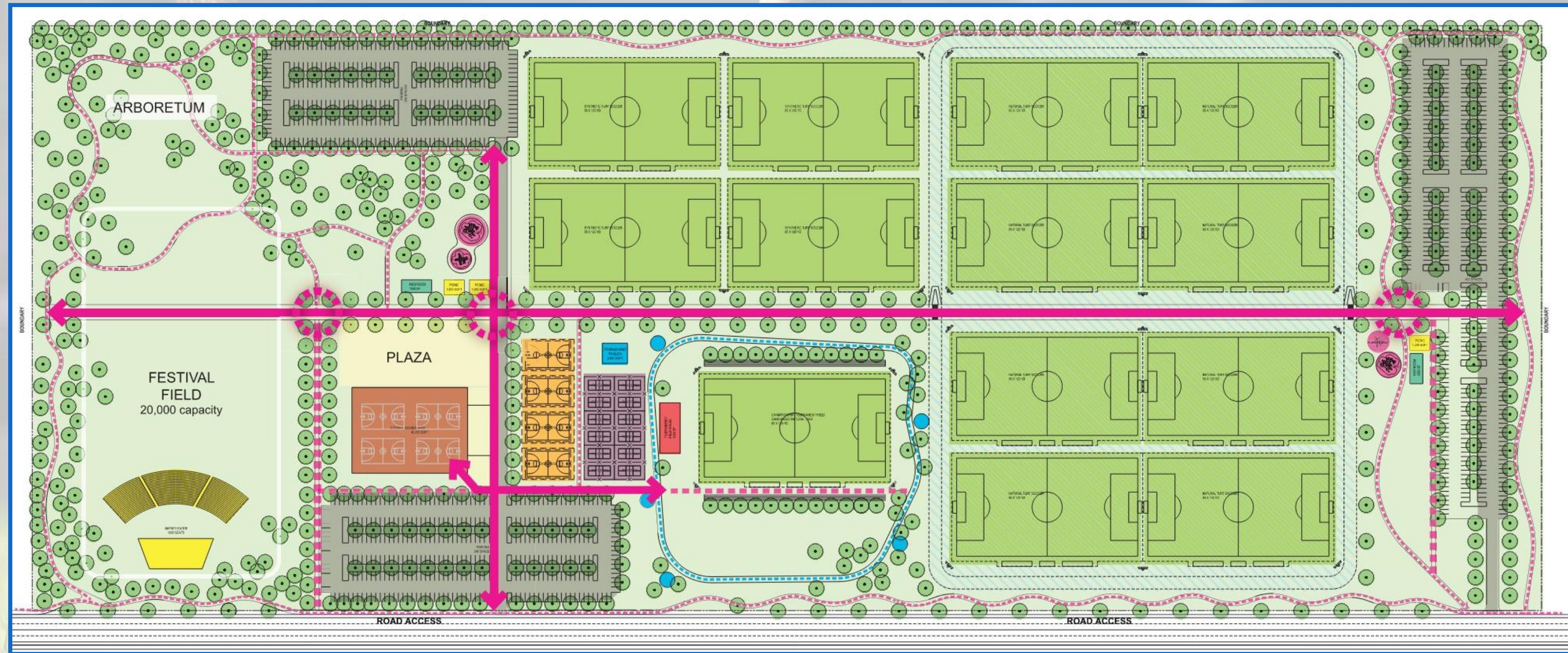


PARK PROGRAM

-  50M POOL AND REC POOL
-  POOL HOUSE
-  SHADE STRUCTURE
-  OPEN SPACE



FUTURE COMMUNITY PARK



LEGEND

AMPHITHEATER
1000 seat capacity

BASKETBALL
4 outdoor courts

FITNESS
5 fitness stations
2,000 sqft fitness/event pavilion

PICKLEBALL
12 courts

PICNIC SHELTER
3 shelters
1,200 sqft each

PLAYGROUND
2 playgrounds, ages 2-5
2 playgrounds, ages 5-12

SOCCER
12 High school level fields:
4 synthetic, 8 natural turf.
1 synthetic tournament feild.
65x120 yd each.

TOURNAMENT FIELD HOUSE
4,000 sqft

PARKING
1,029 total stalls

PRIMARY CIRCULATION
 SECONDARY CIRCULATION
 1/3 MILE FITNESS LOOP

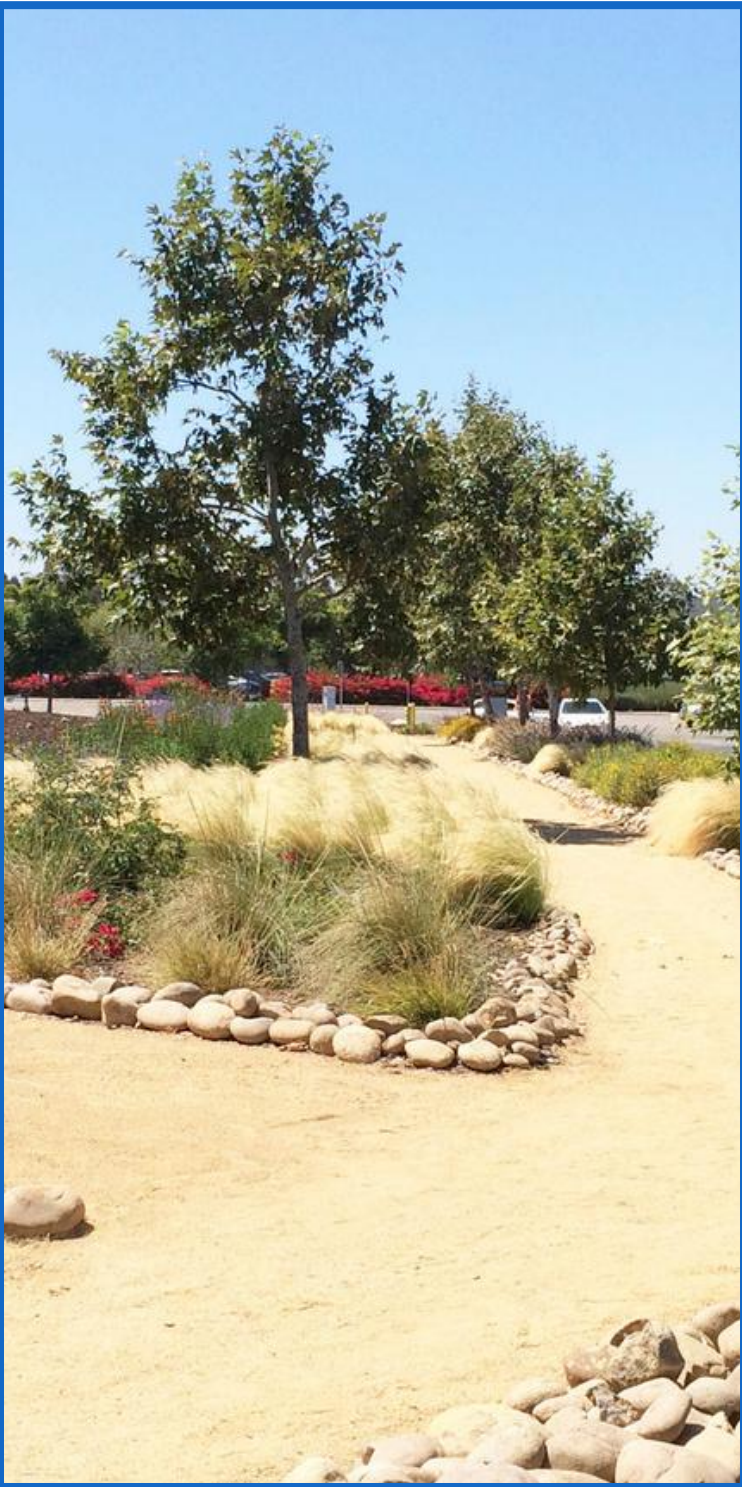
LPA



FUTURE COMMUNITY PARK

Parks and facilities to develop by 2040

NATURE-BASED PARK



TRAILS



SENIOR CENTER



PERFORMING ARTS / LIBRARY



COMMUNITY CENTER





EXISTING PARK RECOMMENDATIONS

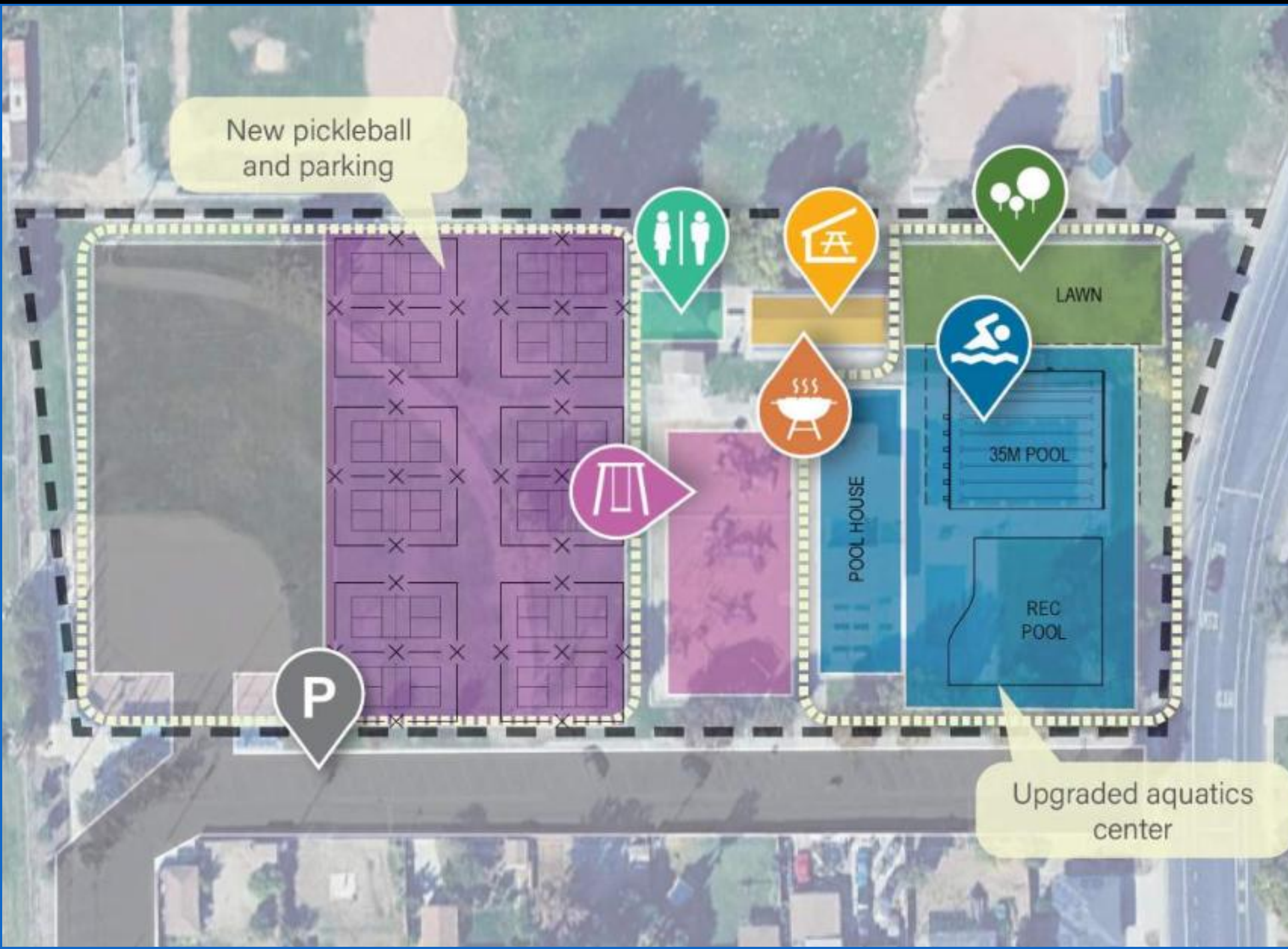


WOODWARD COMMUNITY PARK

- Addition of 8 new lighted tennis courts
- Expand Parking



EXISTING PARK RECOMMENDATIONS



MARION ELLIOTT PARK AND POOL

PHASE 1

- Convert existing softball to 12 new lighted pickleball courts and parking

PHASE 2

- Replace existing pool with new aquatics facility



EXISTING PARK RECOMMENDATIONS



NORTHGATE PARK

- Renovate existing soccer fields
- Replace existing playground with new inclusive playground



R.O.M COST SUMMARY

BASE SCOPE ELEMENTS	TOTAL
NEW 80-ACRE PARK	\$84,140,643
NORTHGATE PARK TURF* AND PLAYGROUND RENOVATIONS	\$3,972,582
MARION ELLIOTT PARK RENOVATION: PICKLEBALL AND PARKING	\$6,568,300
SPRECKELS SKATE PARK AND RESTROOM	\$12,539,120
NEW COMMUNITY CENTER	\$23,180,000
NEW LINEAR PARKS AND TRAILS	\$17,080,000
NEW SENIOR CENTER	\$31,394,870
NEW 80-ACRE PARK	\$48,881,773
NEW AQUATICS FACILITY: 50M POOL & REC POOL	\$47,417,122
WOODWARD PARK TENNIS COURTS	\$12,012,750
NEW PERFORMING ARTS & LIBRARY	\$92,356,780
NEW LINEAR PARKS AND TRAILS	\$17,080,000
NEW 80-ACRE PARK	\$8,006,344
MORENZONE CONVERSION TO MANTECA EVENT CENTER*	\$18,354,000
MARION ELLIOTT POOL RENOVATIONS	\$24,924,239
NEW LINEAR PARKS AND TRAILS	\$34,160,000
LAND ACQUISITION FOR COMMUNITY & SPECIAL-USE PARKS (TO BE SPLIT EVENLY AMONG EACH PHASE)	\$77,055,000
NEIGHBORHOOD PARK DEVELOPMENT (TO BE SPLIT EVENLY AMONG EACH PHASE)	\$196,620,000
COMMUNITY AND SPECIAL USE PARK DEVELOPMENT (TO BE SPLIT EVENLY AMONG EACH PHASE)	\$175,125,000
TOTAL ESTIMATED CONSTRUCTION COST	\$930,568,525

PHASE 1 (1-5 YRS)

PHASE 2 (6-10 YRS)

PHASE 3
(11-15 YRS)

PARK DEVELOPMENT
(ALL PHASES)

PHASE 1

Specific Facility Cost: \$178,875,516
Add'l Park Development Cost: \$149,500,000
TOTAL PHASE COST: \$328,375,516

PHASE 2

Specific Facility Cost: \$217,748,426
Add'l Park Development Cost: \$149,500,000
TOTAL PHASE COST: \$367,248,426

PHASE 3

Specific Facility Cost: \$85,444,583
Add'l Park Development Cost: \$149,500,000
TOTAL PHASE COST: \$234,944,583

OVERALL ESTIMATED COST (15 YRS): \$930,568,525





LPA

Changing Lives by Design™