

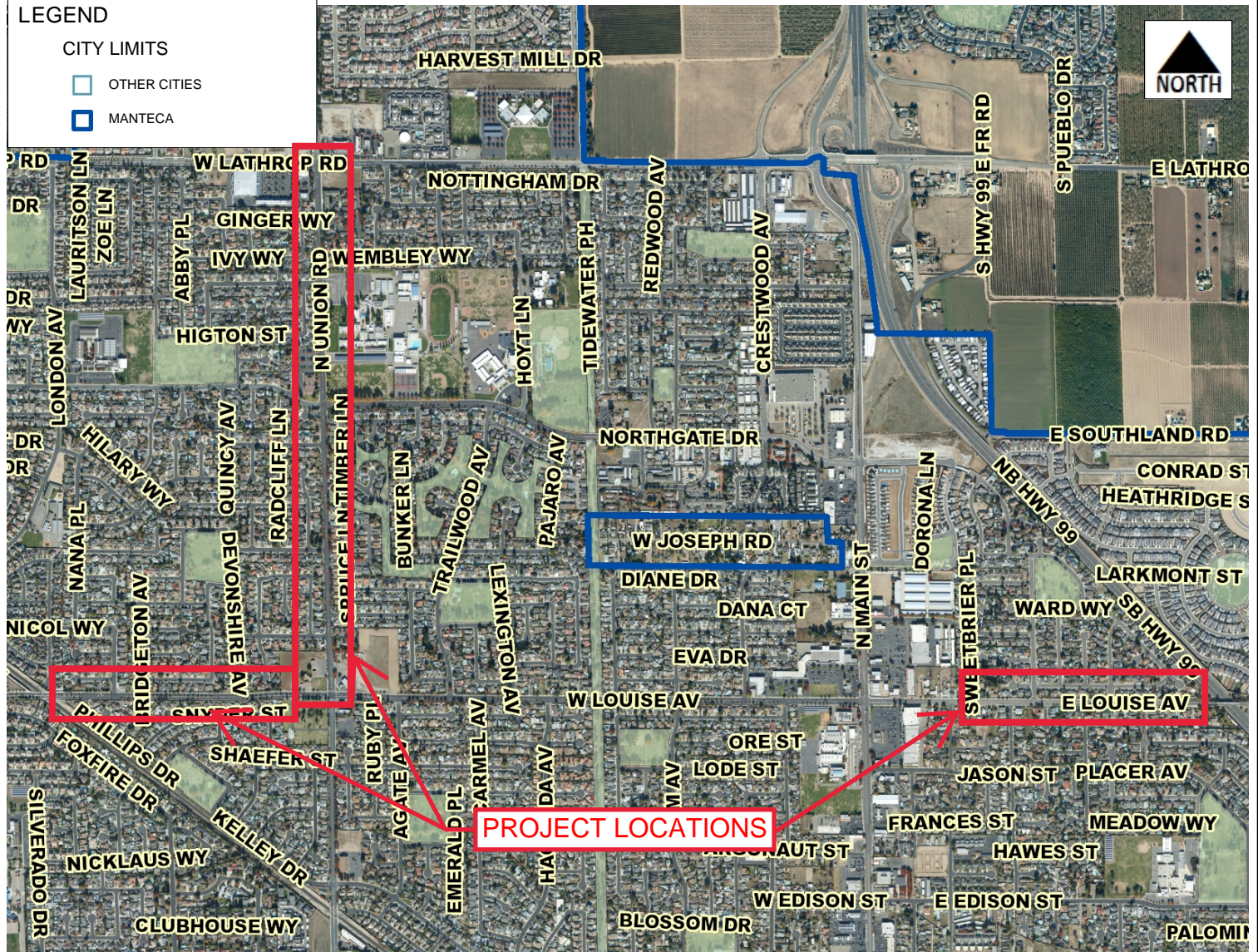
SB1 PROJECT LOCATION

CIP (25002) ROAD SAFETY BARRIER WALL PROJECT

LEGEND

CITY LIMITS

- OTHER CITIES
- MANTECA



Source: City of Manteca GIS Viewer

PROJECT AND DESCRIPTION

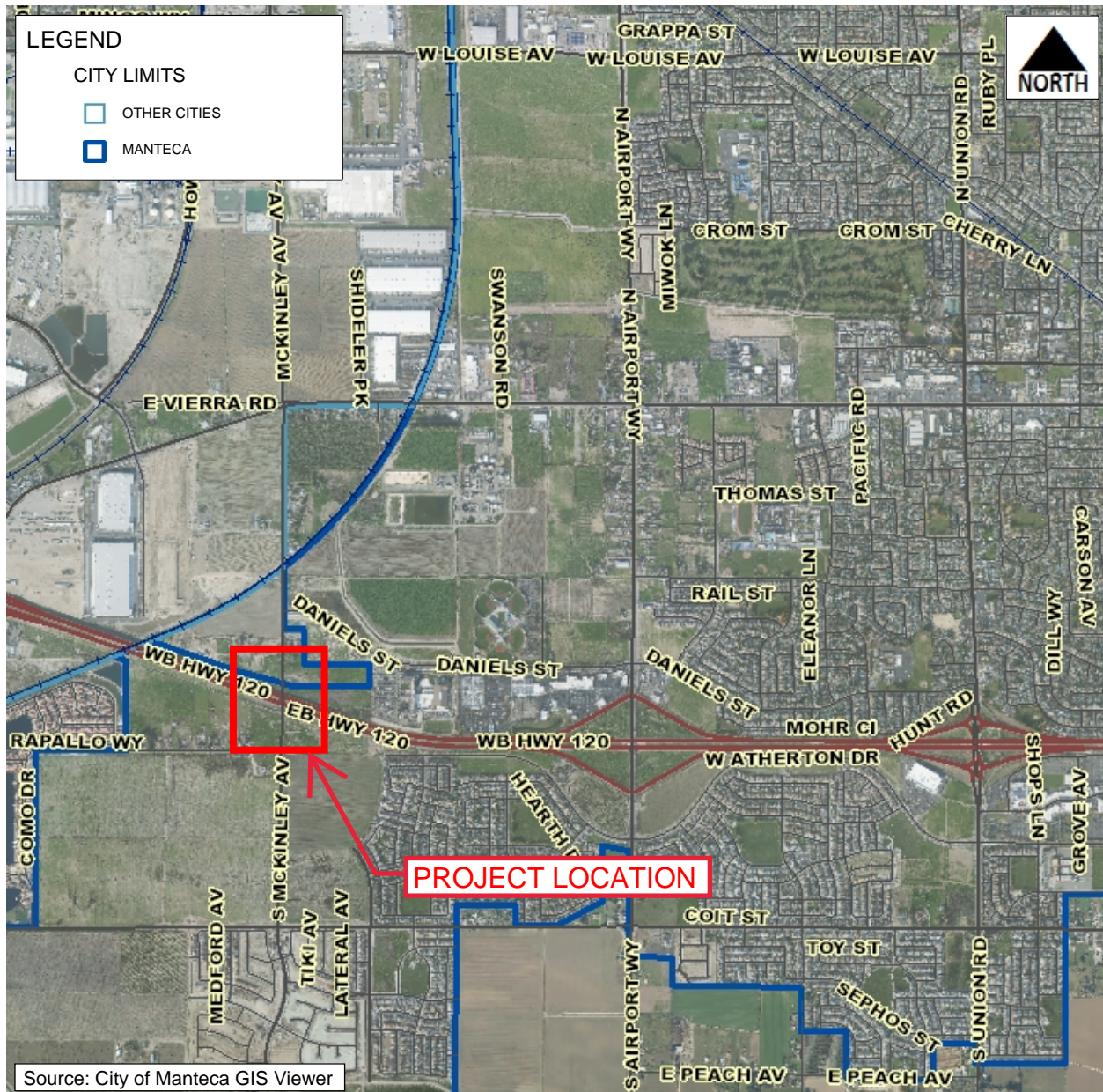
This project will replace the protective road safety barrier wall along sections of Union Road and Louise Avenue for improved traffic safety .

Project construction estimated schedule start is July 2025 and end June 2026.

The estimated useful life of the project is approximately 30 years.

SB1 PROJECT LOCATION

CIP (11034) SR 120/MCKINLEY AVE INTERCHANGE PROJECT

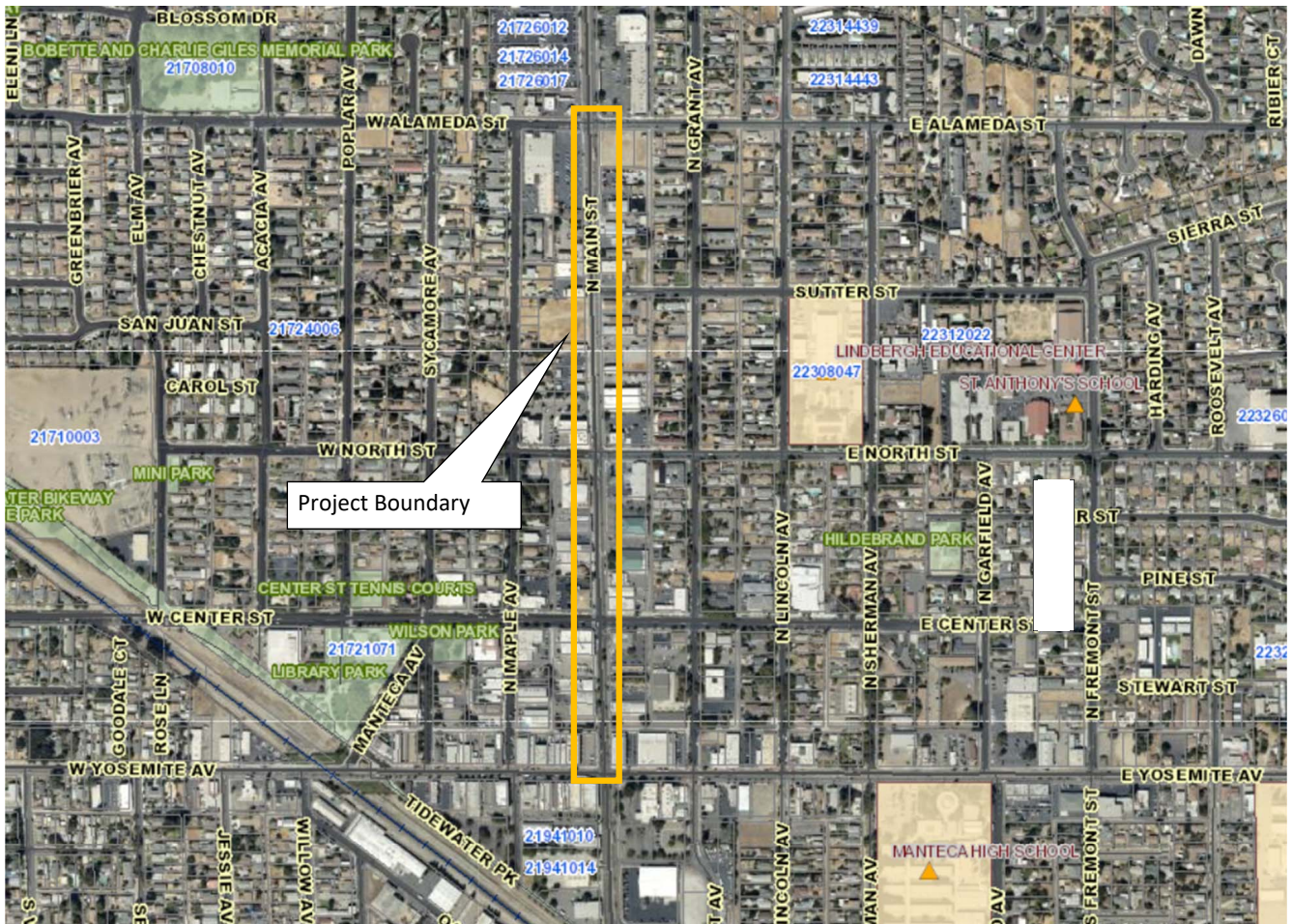
PROJECT AND DESCRIPTION

The proposed project is to improve traffic safety and reduce traffic congestion on a portion of McKinley Avenue (local road). McKinley Avenue (local road) is proposed to be widened to six lanes passing underneath the existing State Route 120 structures, add new curb, gutter, sidewalk, storm drainage facilities, striping and traffic signal system. McKinley Ave is an important arterial that connects the City of Manteca local traffic to State Route 120.

Project construction estimated schedule start is July 2022 and end December 2025.
The estimated useful life of the project is 30 years.

SB1 PROJECT LOCATION

CIP (17063) MAIN STREET: YOSEMITE AVE TO
ALAMEDA ST IMPROVEMENT PROJECT



PROJECT DESCRIPTION

This project will rehabilitate, replace, and/or restore pavement that is aging or beginning to fail. The project will include includes grind and AC overlay, dig-outs, removal and replacing of landscape medians, modifying curb, gutter and sidewalks, new street striping, traffic signal optimization and ADA curb ramps improvements.

Project construction estimated schedule start July 2025 and June 2026.

The estimated useful life of the pavement rehabilitation is approximately 20 years.

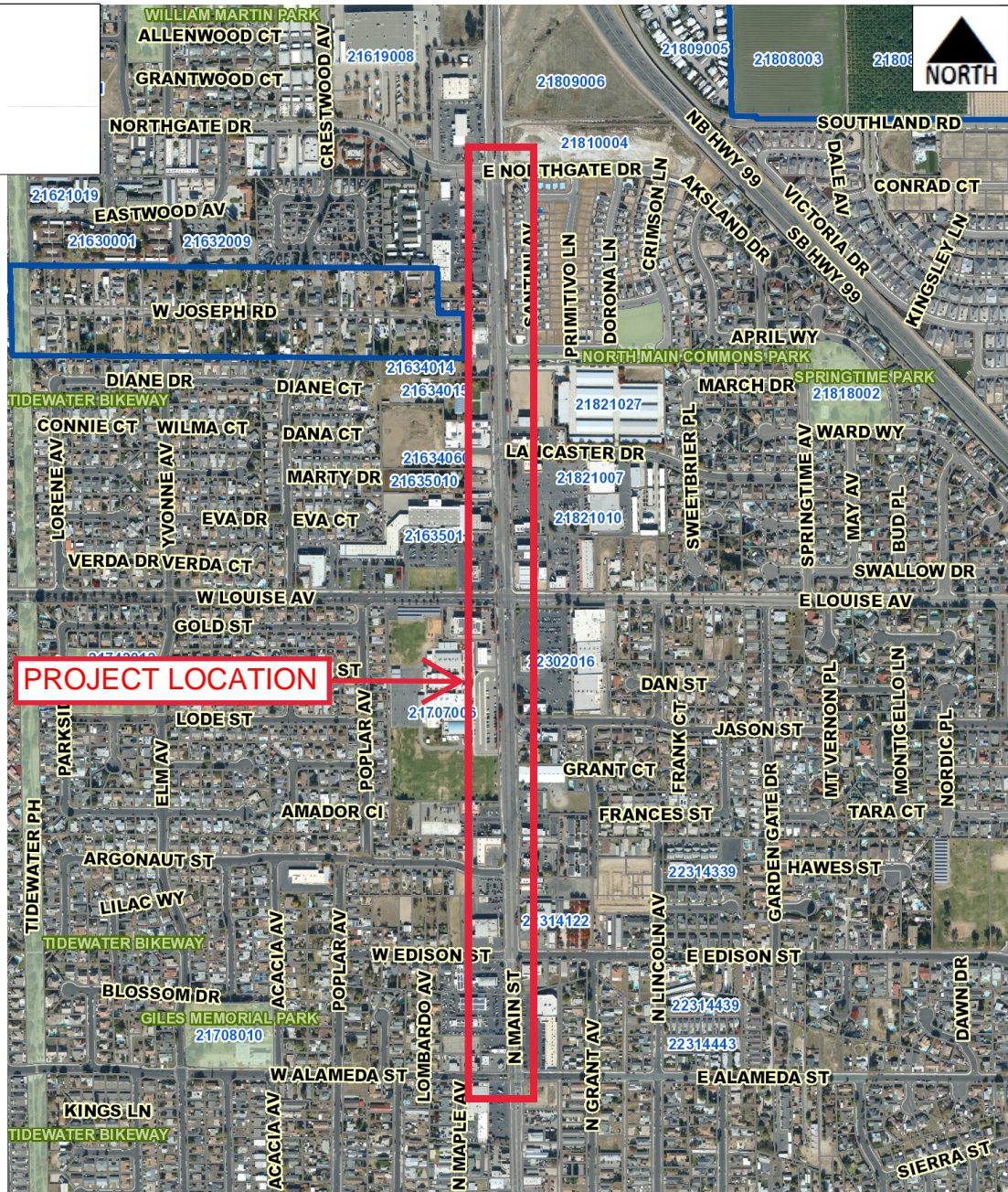
SB1 PROJECT LOCATION

CIP (2005) MAIN ST (NORTHGATE DR TO ALAMEDA ST)
BIKE & PEDESTRIAN IMPROVEMENTS PROJECT

LEGEND

CITY LIMITS

 OTHER CITIES

 MANTECA


Source: City of Manteca GIS Viewer

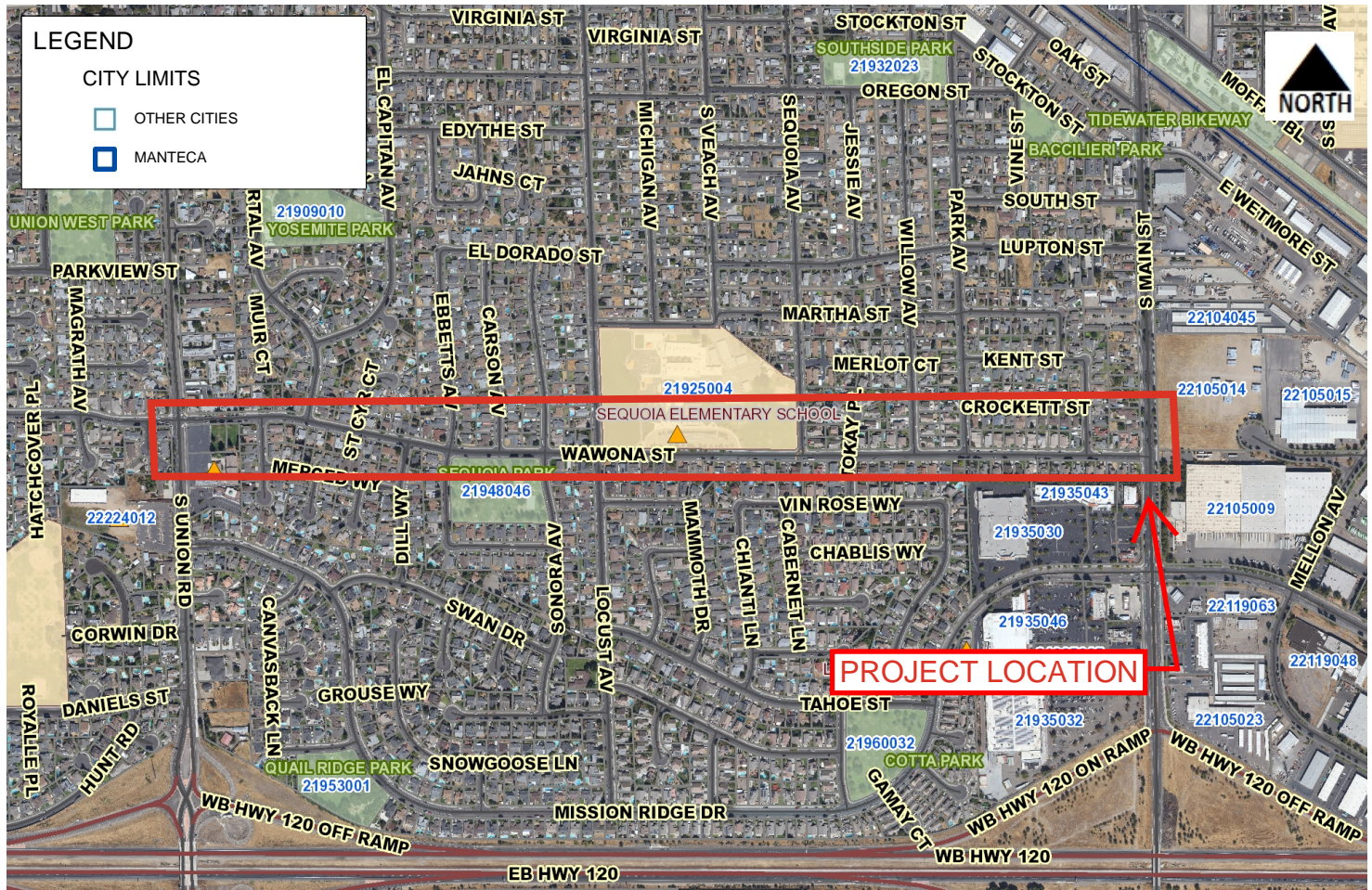
PROJECT AND DESCRIPTION

Install Class II bike lanes, raised medians, pedestrian median fencing, curb ramps, enhanced pedestrian crossings, modify traffic signal detector loops along Main St. Install pedestrian hybrid beacon (HAWK) signal at Main St & Edison St intersection.

Project construction estimated schedule start is August 2025 and end June 2026.
 The estimated useful life of the project is approximately 20 years.

SB1 PROJECT LOCATION

CIP (New) Wawona Street Pavement Maintenance Project



Source: City of Manteca GIS Viewer

PROJECT AND DESCRIPTION

This project will reconstruct, and/or rehabilitate pavement of a portion of Wawona Street. The project may include full reconstruction of the roadway section, grind and AC overlay, digouts, repair curb, gutter, crack seal, cape seal and sidewalks, new street striping, and ADA curb ramps improvements. Wawona Street is classified an arterial road that receives heavy truck traffic.

Project construction estimated schedule start is July 2025 and end December 2025.
The estimated useful life of the project is 20 years.

ATTACHMENT 2

SB1 PROJECT LOCATION

CIP (New) Shasta Park Area Pavement Maintenance Project

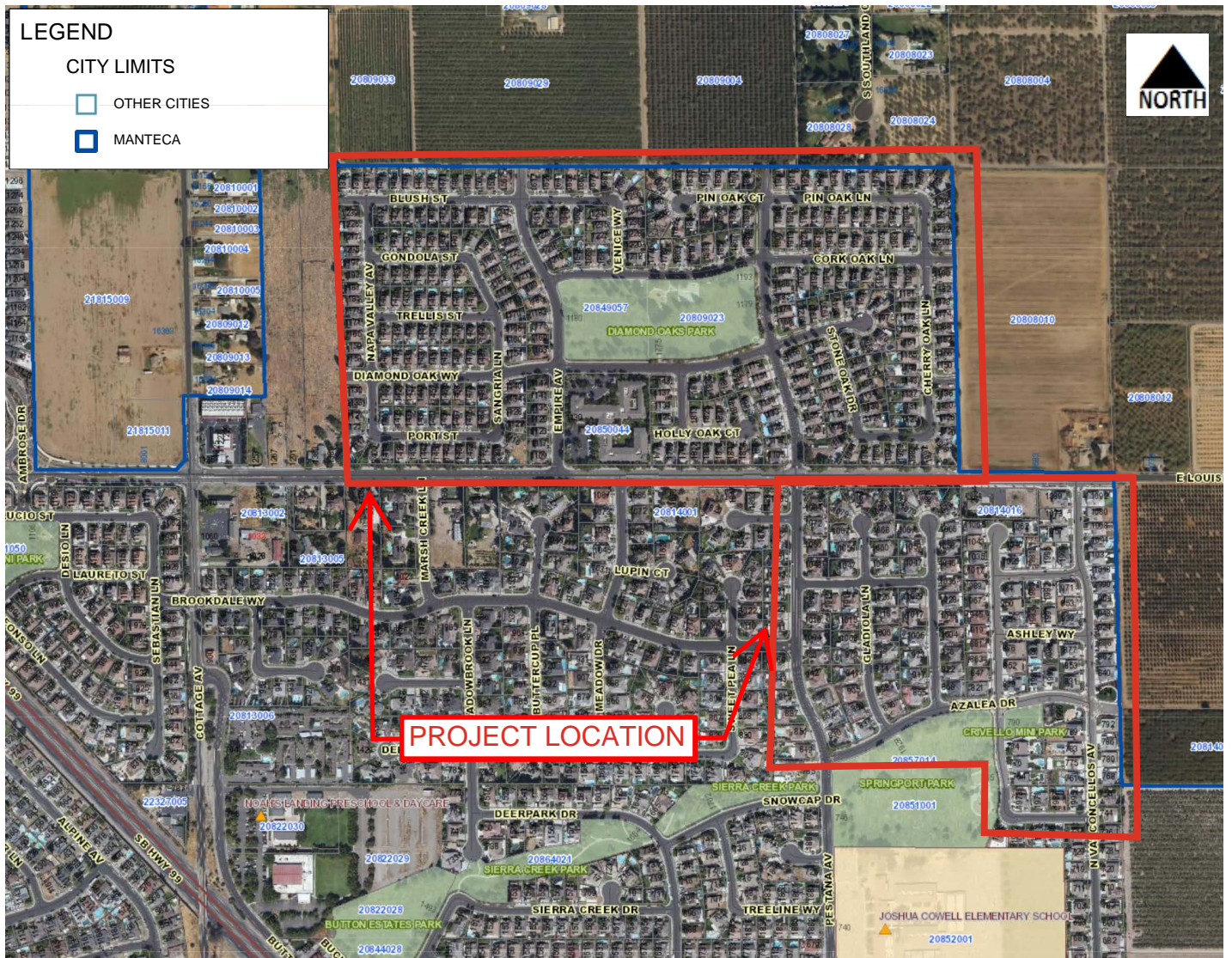


PROJECT AND DESCRIPTION

This project will reconstruct, and/or rehabilitate pavement within the project area identified by the red boundary shown on the project map. The project may include full reconstruction of the roadway section, grind and AC overlay, digouts, repair curb, gutter, crack seal, cape seal and sidewalks, new street striping, and ADA curb ramps improvements. The Project Streets are classified an arterial road that receives heavy truck traffic.

Project construction estimated schedule start is July 2025 and end December 2025.
The estimated useful life of the project is 20 years.

SB1 PROJECT LOCATION

CIP (New) 2025 Pavement Maintenance Project

Source: City of Manteca GIS Viewer

PROJECT AND DESCRIPTION

This project will reconstruct, and/or cape seal majority of roads within the identified project locations. The project may include full reconstruction of the roadway section, crack seal, cape seal, repair curb, gutter and sidewalks, new street striping, and ADA curb ramps improvements. The streets in the project are classified as Collector and Residential roads and do not typically receive heavy truck traffic. Arterial roads are primarily excluded from this project.

Project construction estimated schedule start is July 2025 and end December 2025.
The estimated useful life of the project is 10 to 40 years.