

MANTECA POLICE DEPARTMENT

TRAFFIC UNIT



MANTECA CITY COUNCIL PRESENTATION
SEPTEMBER 17, 2019



TRAFFIC SAFETY

ATTACHMENT 1



***VEHICLE, BICYCLE AND PEDESTRIAN TRAVEL AFFECTS
ALMOST ALL AMERICANS AND PERSISTENT FOCUS MUST
OCCUR ON THE CONTINUED IMPROVEMENT OF TRAFFIC
SAFETY TO SAFEGUARD PUBLIC ROADWAYS.***

TRAFFIC SAFETY

ATTACHMENT 1



-143 MILLION AMERICANS COMMUTE DAILY USING PRIVATE VEHICLES ON PUBLIC ROADWAYS.

-IN 2018, THE U.S. AVERAGED 21,342 COLLISIONS PER DAY.

-CA RECORDED 3,651 FATAL COLLISIONS IN 2018 AND 36,750 FATAL COLLISION WERE RECORDED NATIONWIDE.

TRAFFIC SAFETY

ATTACHMENT 1



***THE MANTECA TRAFFIC UNIT FOLLOWS THE
SAFETY PHILOSOPHY THAT CONSISTS OF THE
3 E's:***

-EDUCATION

-ENGINEERING

-ENFORCEMENT

PRESENTATION OUTLINE

ATTACHMENT 1



- **SCOPE AND RESPONSIBILITIES OF M.P.D.'S TRAFFIC UNIT**
- **TRAFFIC UNIT STRUCTURE**
- **DIRECTED ENFORCEMENT**
- **PRIORITIZATION OF TRAFFIC RESOURCES**
- **M.P.D.'S ANNUAL STATISTICS FOR THE PAST 5 YEARS**
 - COLLISIONS**
 - TRAFFIC CITATIONS**
- **RESOURCES, PROGRAMS AND SUPPORTS SYSTEMS**

SCOPE AND RESPONSIBILITIES

ATTACHMENT 1



- **TRAFFIC COLLISION INVESTIGATIONS**
- **TRAFFIC-RELATED CRIMINAL INVESTIGATIONS**
- **TRAFFIC ENFORCEMENT AND DEPLOYMENT**
- **TRAFFIC COLLISION PREVENTION**
- **OVERALL COMMUNITY CARE TAKING**

SCOPE AND RESPONSIBILITIES

ATTACHMENT 1

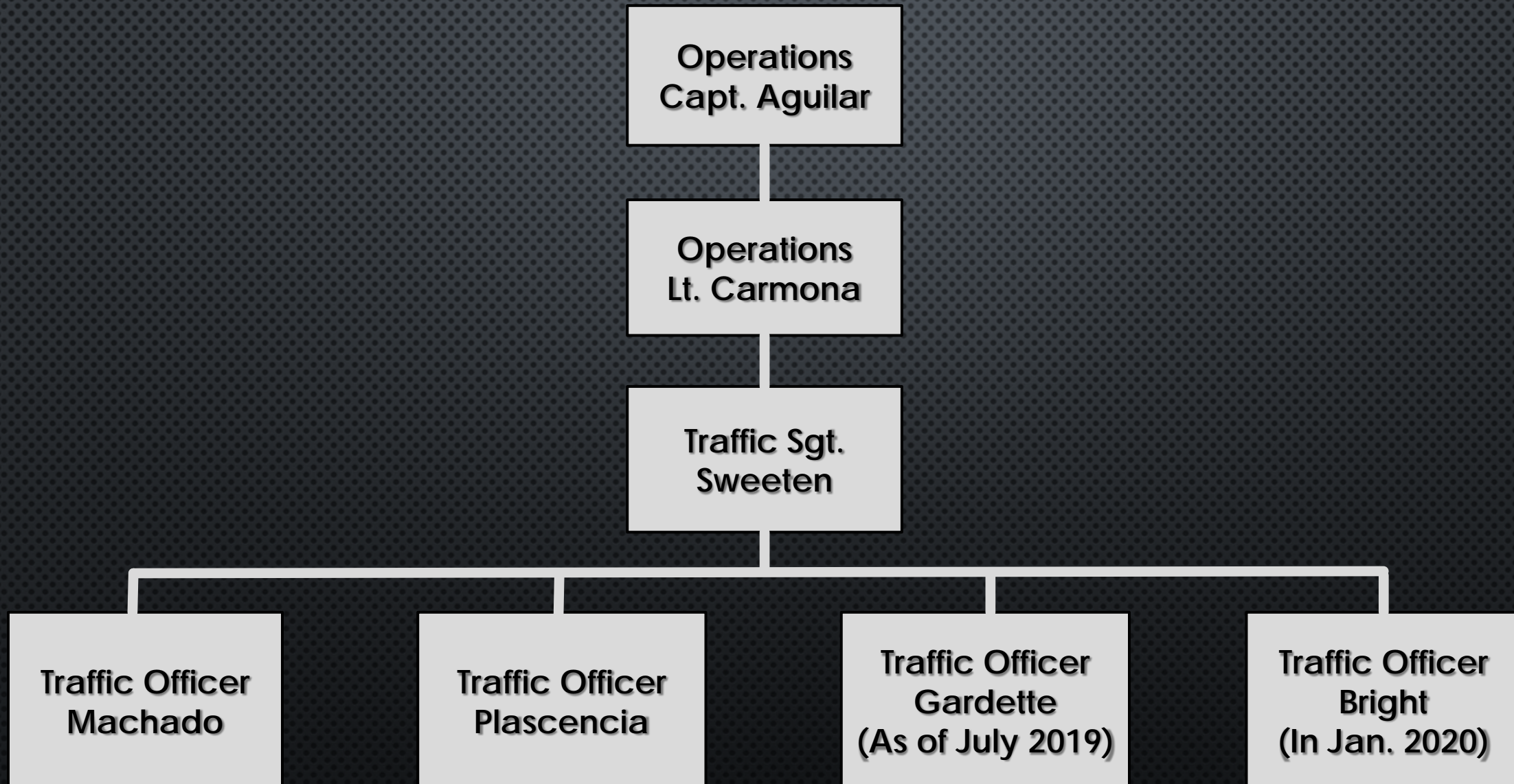


OTHER ROLES INCLUDE:

- *TRAFFIC CONTROL AND MANAGEMENT FOR SPECIAL EVENTS.*
- *TRAFFIC EDUCATION PRESENTATIONS TO THE COMMUNITIES YOUTH.*
- *ASSIST PATROL FUNCTIONS.*

TRAFFIC UNIT STRUCTURE

ATTACHMENT 1



DIRECTED ENFORCEMENT

ATTACHMENT 1



***WHAT DOES DIRECTED OR TARGETED TRAFFIC
ENFORCEMENT MEAN?***

DIRECTED ENFORCEMENT

ATTACHMENT 1



DIRECTED ENFORCEMENT IS A BEST PRACTICES
STRATEGY FOR DEPLOYING RESOURCES TO AREAS
OF CONCERN.

DIRECTED ENFORCEMENT

ATTACHMENT 1



AREAS OF CONCERN ARE IDENTIFIED BY:

- *PRIMARY COLLISION FACTORS (PCF) DATA*
- *OBSERVED ROADWAY VIOLATIONS.*
- *INCREASED SAFETY CONCERNS (SCHOOL ZONES, CONSTRUCTION AREAS).*
- *AREAS WHERE THE MOTORING PUBLIC ARE CONCENTRATED.*
- *COMMUNITY COMPLAINTS.*

DIRECTED ENFORCEMENT

ATTACHMENT 1



MANTECA'S TOP PRIMARY COLLISION FACTORS ARE:

- 1. UNSAFE SPEED***
- 2. RIGHT OF WAY VIOLATIONS***
- 3. UNSAFE TURNING MOVEMENTS***

PRIORITIZATION OF RESOURCES

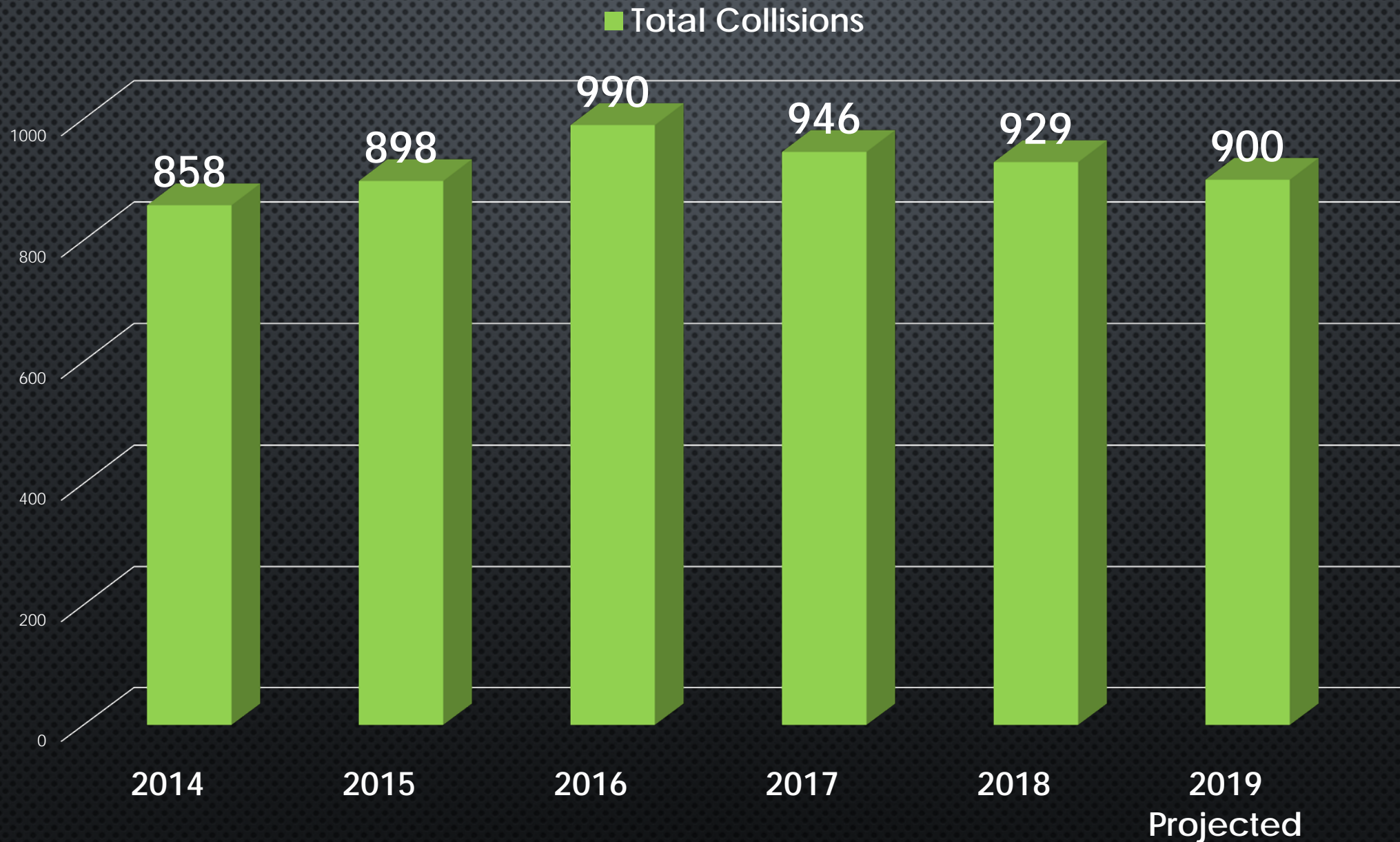
ATTACHMENT 1



THE TRAFFIC UNIT ENSURES IT WILL HAVE THE GREATEST IMPACT ON TRAFFIC SAFETY BY BEING PRESENT IN THE AREAS WHERE AND WHEN TRAFFIC COLLISIONS AND VIOLATIONS ARE OCCURRING WITH FREQUENCY.

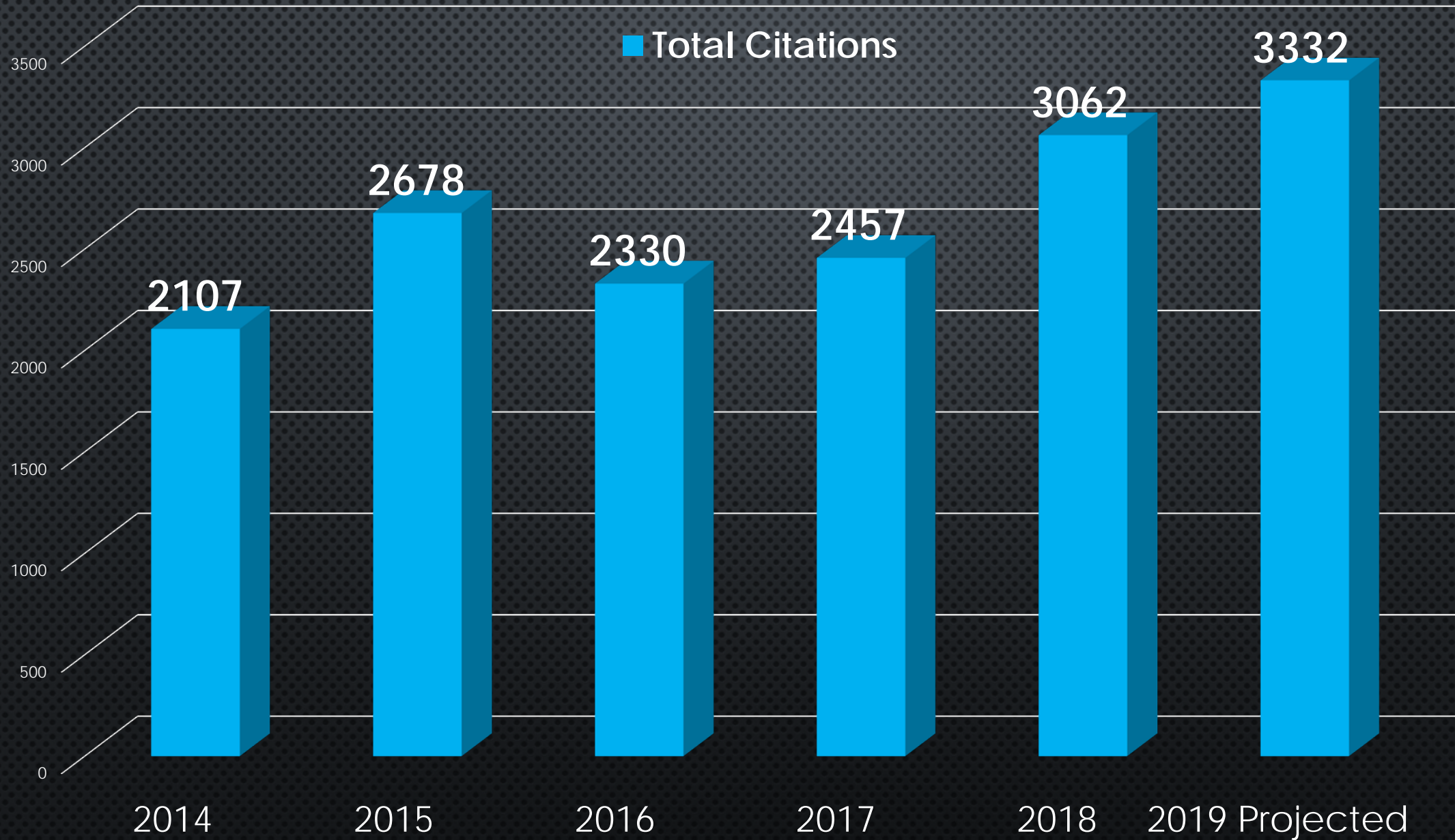
ANNUAL TRAFFIC STATISTICS

ATTACHMENT 1



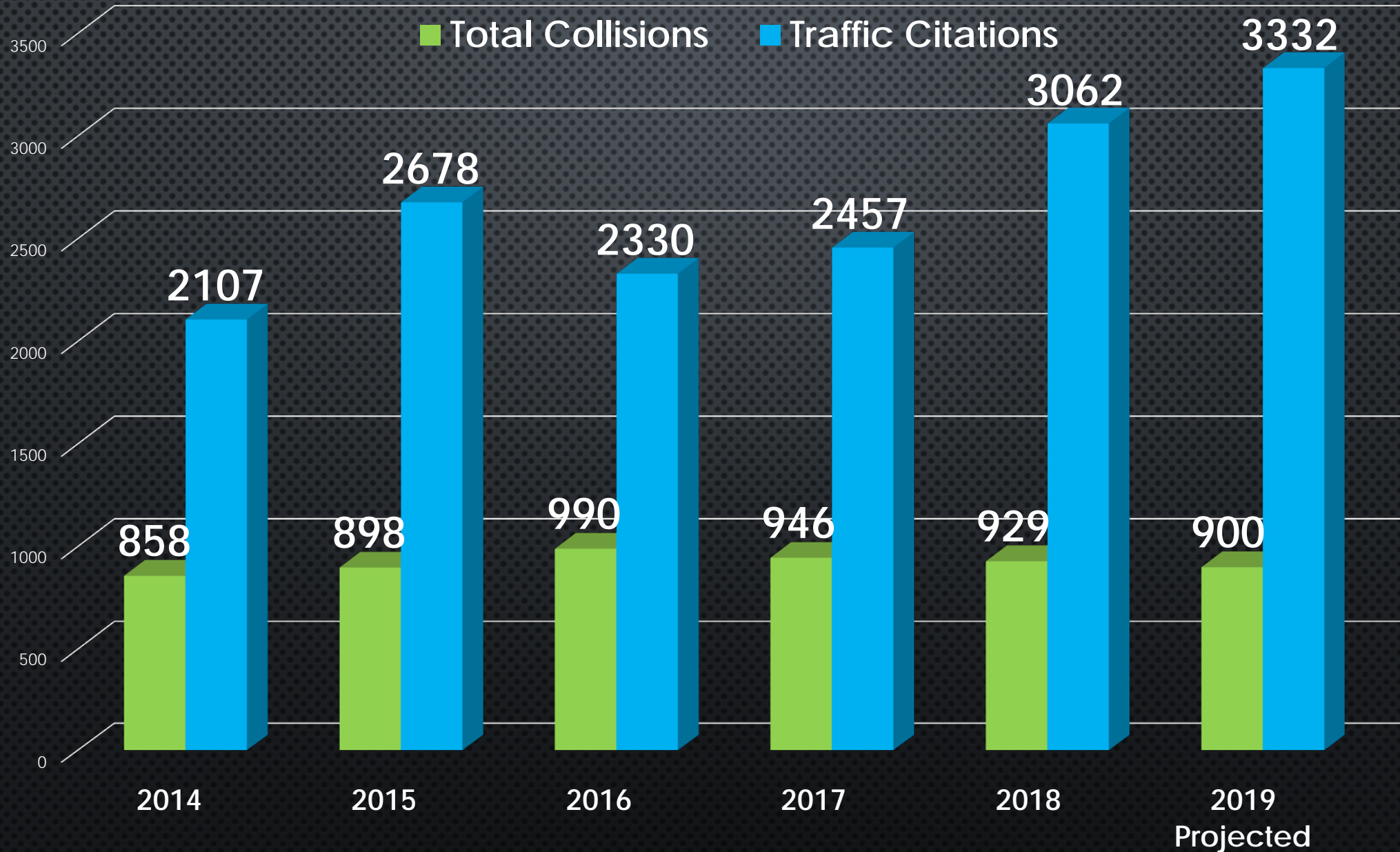
ANNUAL TRAFFIC STATISTICS

ATTACHMENT 1



ANNUAL TRAFFIC STATISTICS

ATTACHMENT 1

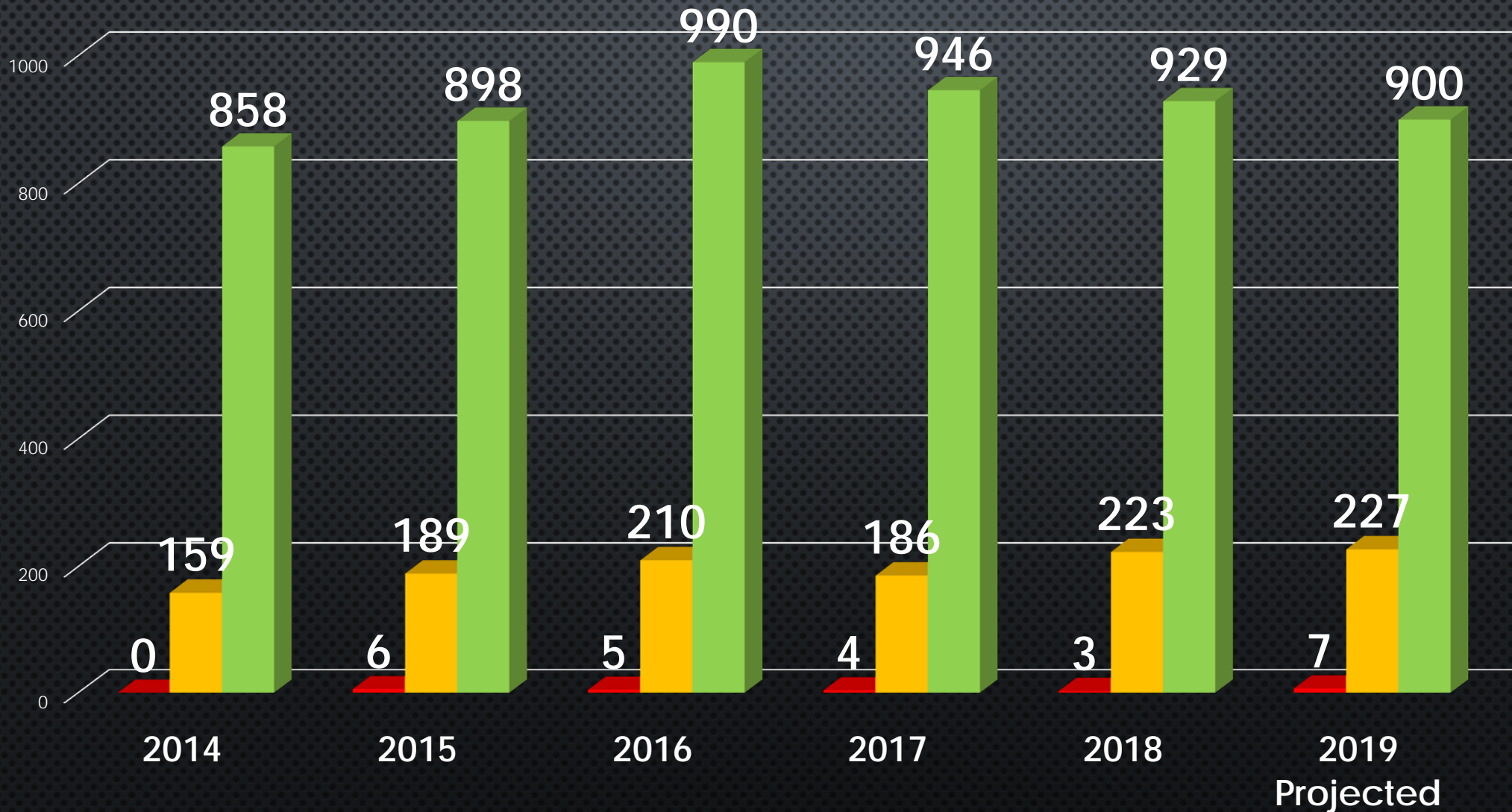


ANNUAL TRAFFIC STATISTICS

ATTACHMENT 1



■ Fatal Collisions ■ Injury Collisions ■ Total Collisions



RESOURCES, PROGRAMS AND SUPPORT SYSTEMS

ATTACHMENT 1



SAN JOAQUIN COUNTY'S SELECTIVE TRAFFIC ENFORCEMENT PROGRAM (S.T.E.P.) OPERATIONS.

- **DEVELOPED IN OCT. 2018. AND S.T.E.P. OPS PROVIDE INCREASED TRAFFIC SUPPORT BY PARTNERING WITH OTHER LAW ENFORCEMENT AGENCIES IN S.J. COUNTY TO COMBAT UNSAFE DRIVING.**
- **PARTICIPATING AGENCIES INCLUDED: MANTECA P.D., TRACY P.D., SAN JOAQUIN S.O., RIPON P.D. AND LODI P.D.**

RESOURCES, PROGRAMS AND SUPPORT SYSTEMS

ATTACHMENT 1



- **S.T.E.P. OPERATION HOSTING ROTATES BETWEEN PARTICIPATING AGENCIES AND OCCURS APPROXIMATELY TWICE A YEAR PER INVOLVED CITY.**
- **JANUARY 30TH 2019, MANTECA'S OPERATION NETTED 286 TRAFFIC STOPS & 264 TOTAL CITATIONS.**
- **NEXT S.T.E.P. OPERATION FOR MANTECA IS SCHEDULED IN OCTOBER 2019.**

RESOURCES, PROGRAMS AND SUPPORT SYSTEMS

ATTACHMENT 1



CALIFORNIA OFFICE OF TRAFFIC SAFETY (CA OTS)

- CA OTS PROVIDES FEDERAL FUNDING TO LOCAL LAW ENFORCEMENT AGENCIES FOR ADDITIONAL TRAFFIC SAFETY ENFORCEMENT AND TRAFFIC SAFETY CAMPAIGNS
- ON OCT. 1, 2019 THE CITY OF MANTECA WILL TENATIVELY RECEIVE A GRANT AWARD OF \$79,000.

RESOURCES, PROGRAMS AND SUPPORT SYSTEMS

ATTACHMENT 1



2019 CA OTS GRANT AWARD WILL FUND:

- **2 DUI CHECKPOINTS**
- **4 DUI SATURATION PATROLS**
- **5 FULL SCALE TRAFFIC OPERATIONS**
- **1 FULL SCALE DISTRACTED DRIVER OPERATION**
- **1 MOTORCYCLE SAFETY OPERATION**
- **1 TRAFFIC WARRANT SWEEP**

RESOURCES, PROGRAMS AND SUPPORT SYSTEMS



NATIONAL HIGHWAY TRAFFIC SAFETY ADMINISTRATION (NHTSA) AND CA OTS WORK IN CONCERT ON NATIONAL SAFETY CAMPAIGNS TO ASSIST IN PUBLIC EDUCATION.



RESOURCES, PROGRAMS AND SUPPORT SYSTEMS

ATTACHMENT 1



PATROL OFFICERS

-WITH A MORE ROBUST PATROL STAFF, TRAFFIC CONCERNS HAVE BEEN ADDRESSED DURING LATE EVENING AND EARLY MORNING HOURS.

-PATROL OFFICERS HAVE HAD THE ABILITY TO PROACTIVELY ADDRESS UNSAFE DRIVING DURING HOURS OF DARKNESS WHEN STATISTICALLY MORE INJURY COLLISIONS OCCUR.



CONCLUSION

***THE MANTECA POLICE DEPARTMENT WILL REMAIN
VIGILANT AND STEADFAST IN THE PURSUIT OF SAFER
ROADWAYS IN THE CITY OF MANTECA.***

MANTECA POLICE DEPARTMENT

TRAFFIC UNIT



MANTECA CITY COUNCIL PRESENTATION
SEPTEMBER 9, 2019

